



# 22 Manor Chare

Newcastle Upon Tyne



SANDERSON  
YOUNG





22 Manor Chare, Quayside  
Newcastle Upon Tyne, NE1 2EQ

A well presented two bedroom apartment, located on the 4th floor of the popular Manor Chare, with a balcony and fabulous dual aspect views. The apartment, a successful let for many years and ideal for investors and first time buyers, benefits from a private balcony with views, underground allocated car parking space and double glazing - offered with no upward chain.

Manor Chare is ideally located on the Quayside for access to all the bars, restaurants and cafes that are close by, as well as offering good accessibility into Newcastle City Centre with its shops and excellent transport links throughout the region

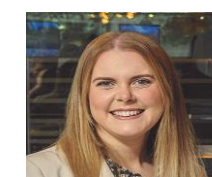
Price Guide:  
Guide Price £159,950







The accommodation comprises: Communal entrance hallway with lift and stair access to all floors | Private entrance on the 4th floor | Entrance hallway | Open plan kitchen/diner with lovely dual aspect views and own separate balcony. The kitchen is well equipped with fairly modern cabinetry and worktops, as well as integrated appliances | Bedroom one with ensuite shower room WC and Juliet balcony | Bedroom two | Family bathroom with three piece suite | Underground car parking space.



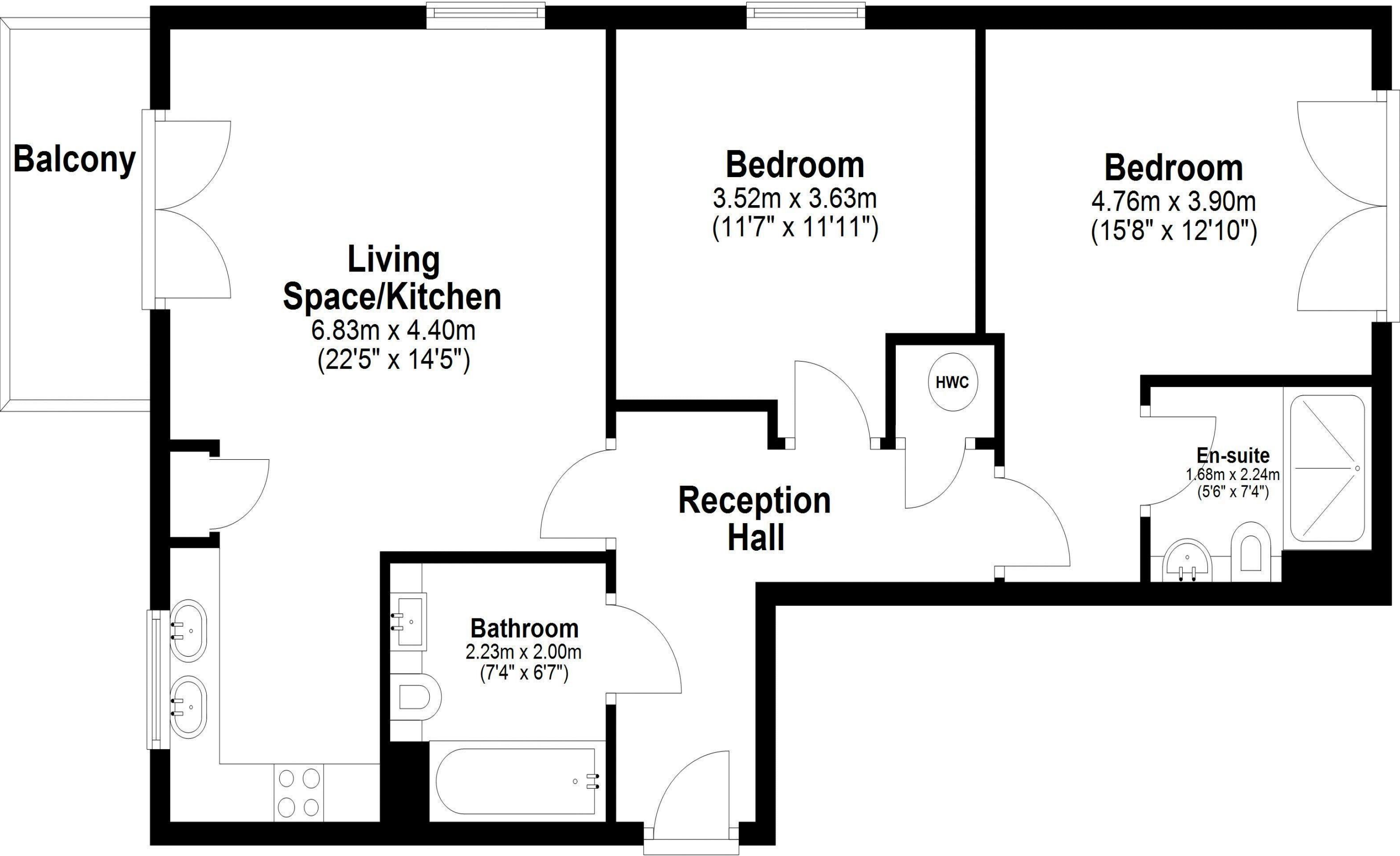
Emma Lane  
0191 213 0033  
[emma.lane@sandersonyoung.co.uk](mailto:emma.lane@sandersonyoung.co.uk)





**Fourth Floor**

Approx. 70.7 sq. metres (761.1 sq. feet)



Rental income is £1250 pcm, which is £15,000 PA equivalent to 9.4% gross yield, subject to service charges at £2910 PA and £250 ground rent PA.

Please note the apartment is tenanted until 10th September 2025.

Services: Mains electric, water and drainage | Tenure: Leasehold | Lease Remaining: TBC | Service Charge: TBC | Council Tax: Band D | Energy Performance Certificate: Rating C

Total area: approx. 70.7 sq. metres (761.1 sq. feet)

**22 Manor Chare Apartments, Manor Chare, Newcastle Upon Tyne**