



18 Moor Court

Gosforth



SANDERSON
YOUNG



18 Moor Court
Gosforth, NE3 4YD

Substantial Purpose Built Penthouse Apartment
Boasting Three Bedrooms, Two Bathrooms, Generous
Kitchen Diner, Large Double Reception Room, Three
External Balconies & Stunning Views Over Newcastle
Town Moor!

This imposing Art Deco building within the heart of
Gosforth provides an excellent location for easy access
to Gosforth High Street with its fantastic range of
amenities including shops, cafes, restaurants and gym,
whilst also being easily placed for access to Newcastle
city centre, with regular public transport links to the
city centre.

Price Guide:
Offers Over £425,000

3 2 2 E

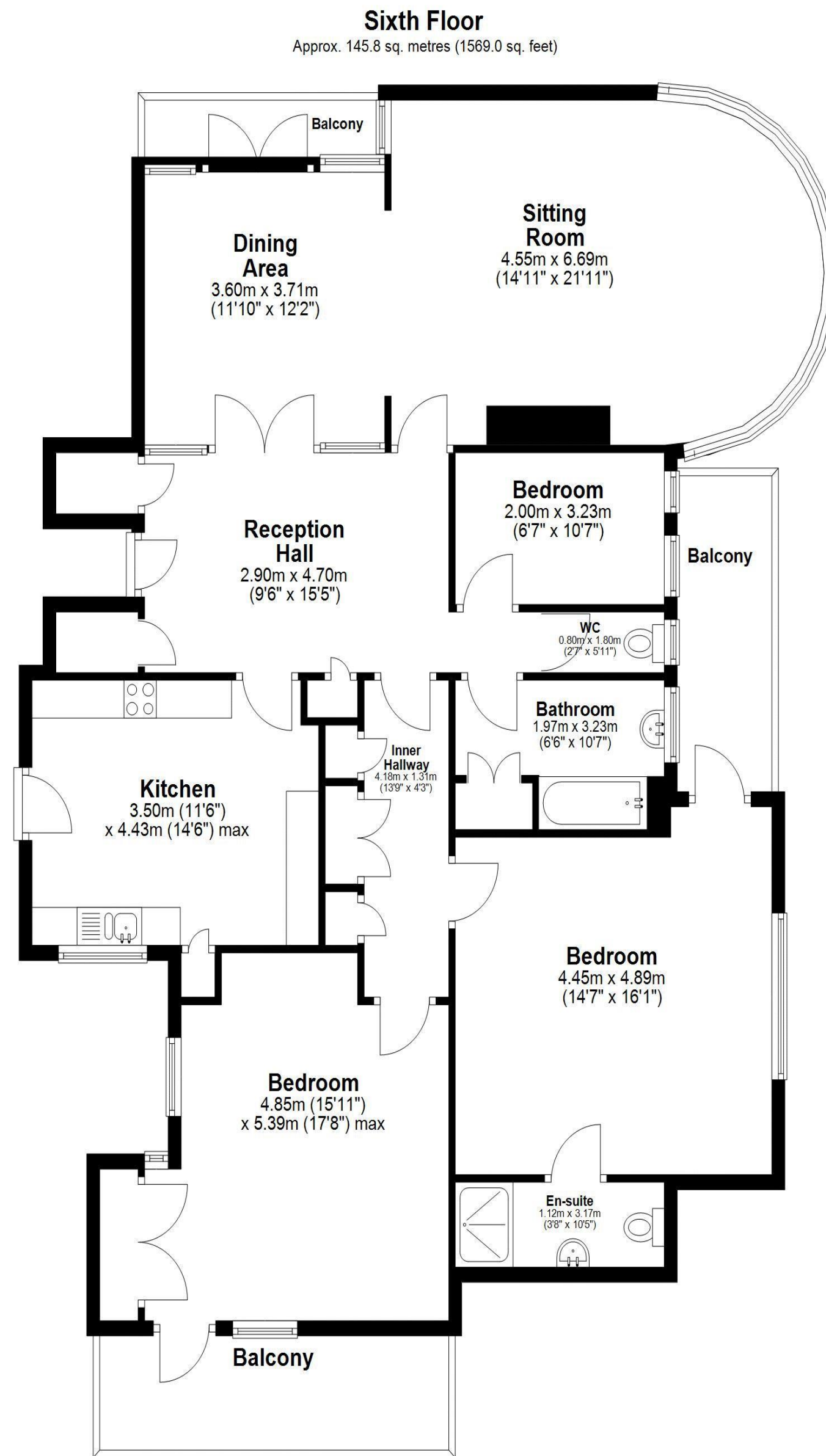




Situated on the sixth (top) floor of Moor Court, and boasting in excess of 1,500 sq/ft, the internal accommodation comprises: Secure communal entrance | Communal hallway with lift and stair access to all floors | Private entrance on the sixth floor | Entrance hallway with two useful store cupboards | Kitchen with integrated appliances | Impressive double reception room with feature curved windows overlooking the Town Moor & Newcastle City Centre | Primary bedroom with ensuite shower room/wc | Bedroom two is a further large double with door opening to a balcony | Bedroom three is a smaller single/study | Bathroom with separate WC.

Harriet Scott
0191 213 0033
harriet.scott@sandersonyoung.co.uk





Total area: approx. 145.8 sq. metres (1569.0 sq. feet)
18 Moor Court, Westfield, -



Externally, the apartment benefits from three balconies to the South, West & North, all with impressive views | Residents parking.

Offered to the market with No Onward Chain, this largest style apartment is available immediately with vacant possession, and early viewings are strongly encouraged!

Services: Mains gas, electric, water & drainage | Tenure: Leasehold | Lease Remaining: 974 Years | Service Charge: £4696 Per Annum | Council Tax: Band D | Energy Performance Certificate: Rating E

18 Moor Court

Gosforth

