



# 11 Hawthorn Court

Hawthorn Road



SANDERSON  
YOUNG





11 Hawthorn Court  
Hawthorn Road, NE3 4TZ

Situated on the ground floor of this impressive purpose development of luxury apartments is this lovely two bedroom apartment.

The apartments were constructed in 2001 on the former site of the police station on Hawthorn Road. They are ideally located for its very convenient and immediate access to the High Street with its shops, banks and offices. The property has the added benefit of having one parking bay situated close to the apartment. The rear courtyard and parking are secure with electrically operated gated access.

The communal areas are attractive and well presented with secure entry access to the front and rear.

**Price Guide:**  
Guide Price £225,000

2 1 2 C







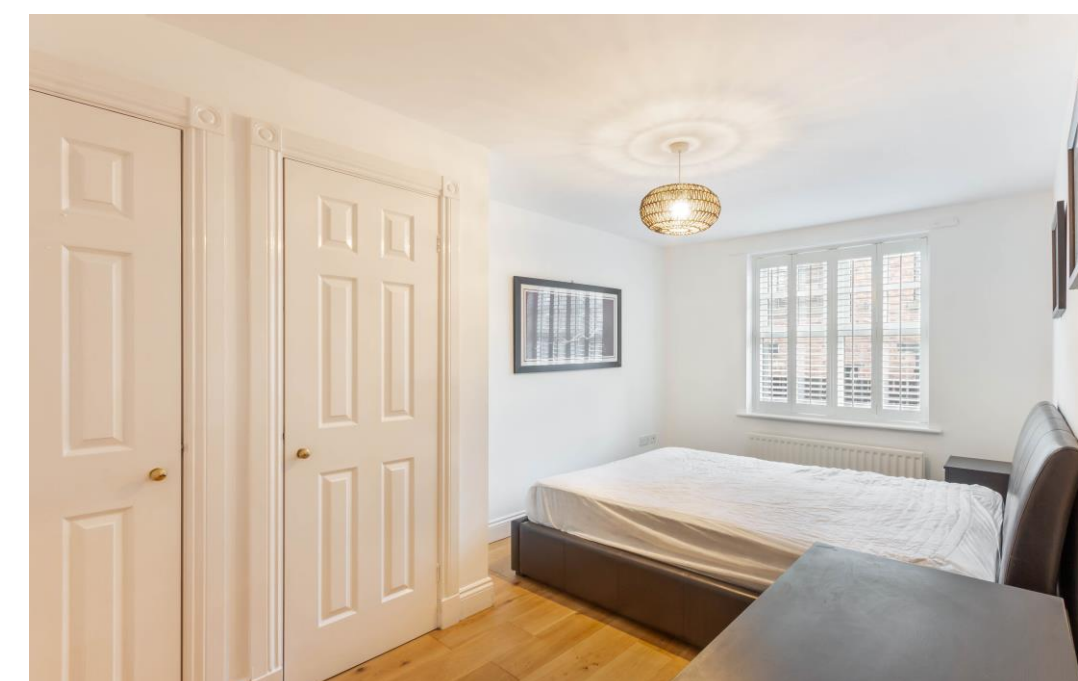
The accommodations includes: A lovely entrance reception hall with airing cupboard and storage space | Access to the large open plan lounge/dining room which has an attractive fireplace with feature inset electric fire and benefitting from plantation shutters | Kitchen/breakfast room which benefits from modern cabinetry and worktops, as well as integrated appliances throughout.

Master bedroom with built in wardrobes and storage cupboards with ensuite shower room/ | Double bedroom with built in double wardrobe | Family bathroom which offers a three piece suite.

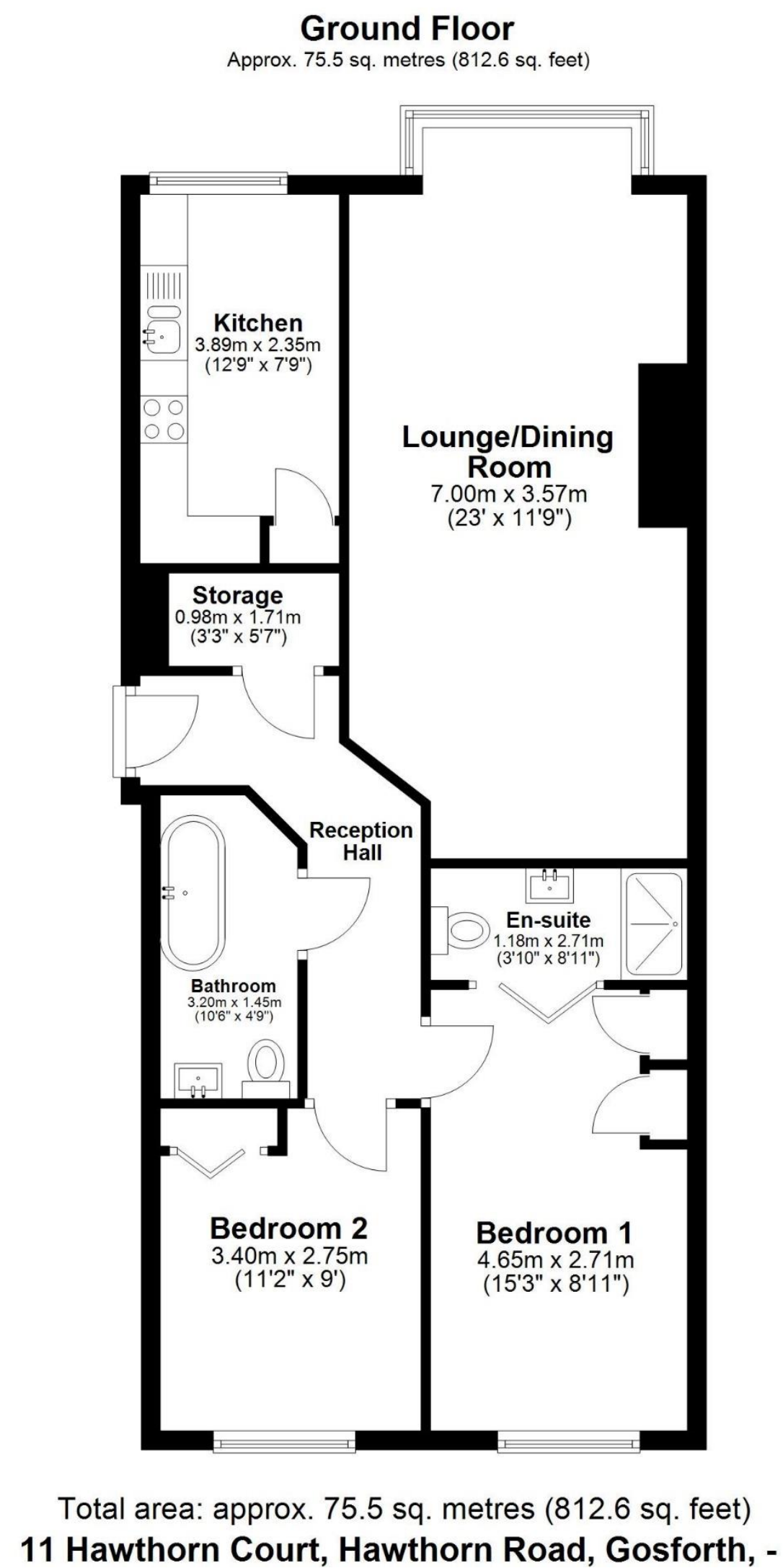


---

**Emma Doran**  
0191 213 0033  
[emma.doran@sandersonyoung.co.uk](mailto:emma.doran@sandersonyoung.co.uk)







Viewing is highly recommended to avoid later disappointment.

Services: Mains electric, gas, water and drainage | Tenure: Leasehold | Lease Remaining: 101 Years | Ground Rent: £50 Per Annum | Service: Charge: £2307.66 per annum | Council Tax: Band C | Energy Performance Certificate: Rating C