



Hayworth House

The Avenue, Medburn





Hayworth House
The Avenue, Medburn, NE20 0JD

Situated on a substantial site extending to approximately 1 acre is this modern detached luxury home, offering stunning open views to the rear over the surrounding countryside and fields.

Built by the current owners in 2019, the property has been finished to an immaculate and high standard throughout with a state of the art open plan kitchen/breakfast room (Burbidge), Villeroy & Boch or Laufen Palace fittings to the main ensuite, high quality floor tiling throughout the main ground floor, as well as fabulous, feature brick fireplaces.

Located in the hamlet of Medburn, on the outskirts of Ponteland village, the property is ideally placed for countryside walks and easy accessibility into Ponteland with its shops, cafes and restaurants, as well as Newcastle International Airport and Newcastle City Centre, which is only a 20-minute drive away.

Price Guide:
Guide Price £1,475,000

5 4 5 C









The internal accommodation comprises: Entrance reception hallway with oak staircase leading up to the first floor, cloaks cupboard and WC | Snug | Sitting room with a feature gas fireplace with brick surround and access to the rear lobby | Lounge with a further feature brick fireplace with wood burning stove and French doors onto the gardens | Dining room with a door opening onto the garden | Magnificent open plan kitchen/breakfast room with a high quality fitted kitchen with a range of modern Burbidge cabinets and granite worktops, a full range of integrated AEG appliances, double Belfast sink, and a large central island. There are also French doors opening onto the gardens | Utility room | Rear lobby | Office. Additionally, the loft area offers considerable additional fully floored storage or play space.

First floor landing | Five good sized bedrooms, all with beautifully presented ensuite bath or shower rooms and two of which benefit from dressing rooms and plunge baths as well as full large showers.

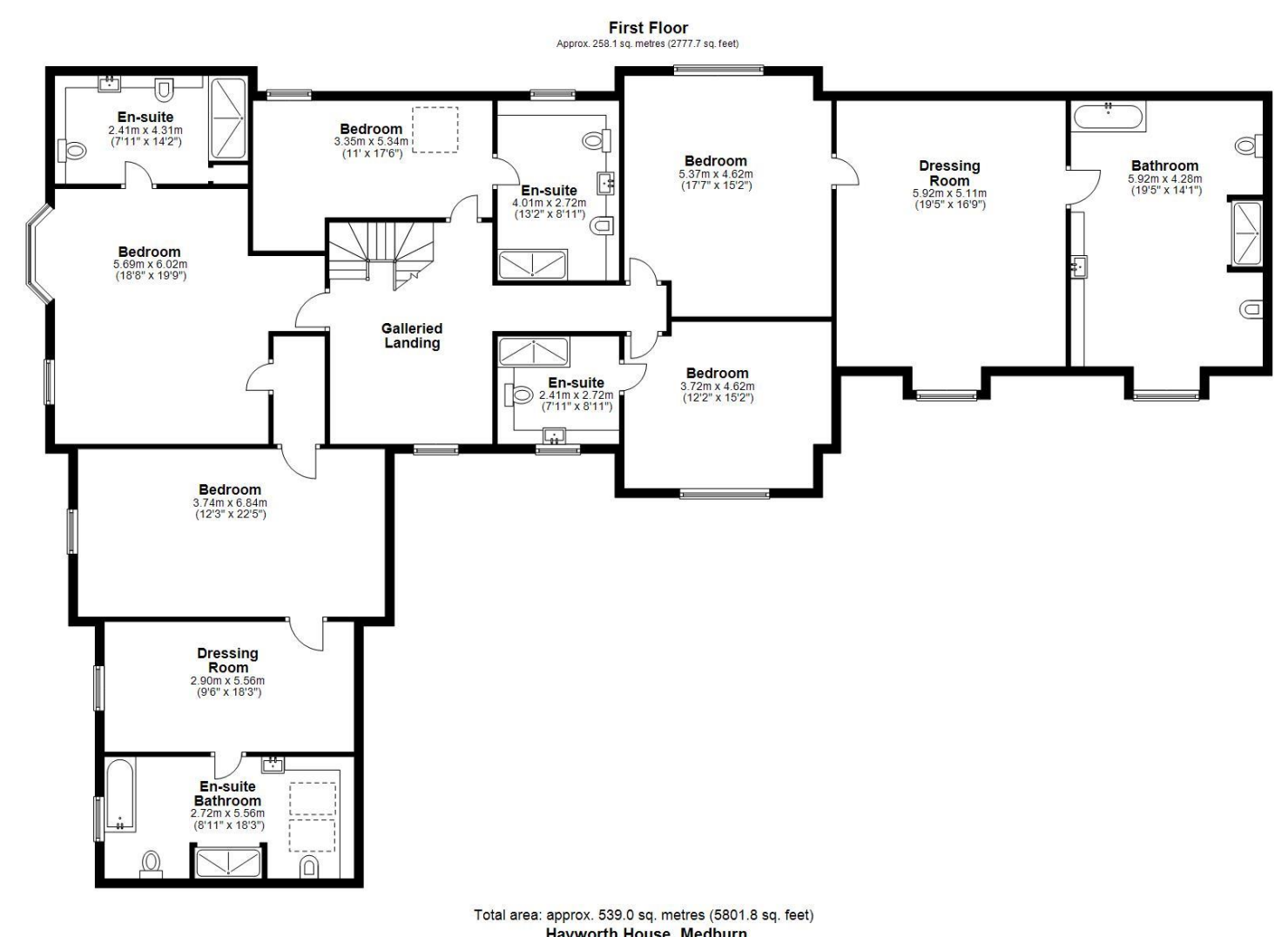
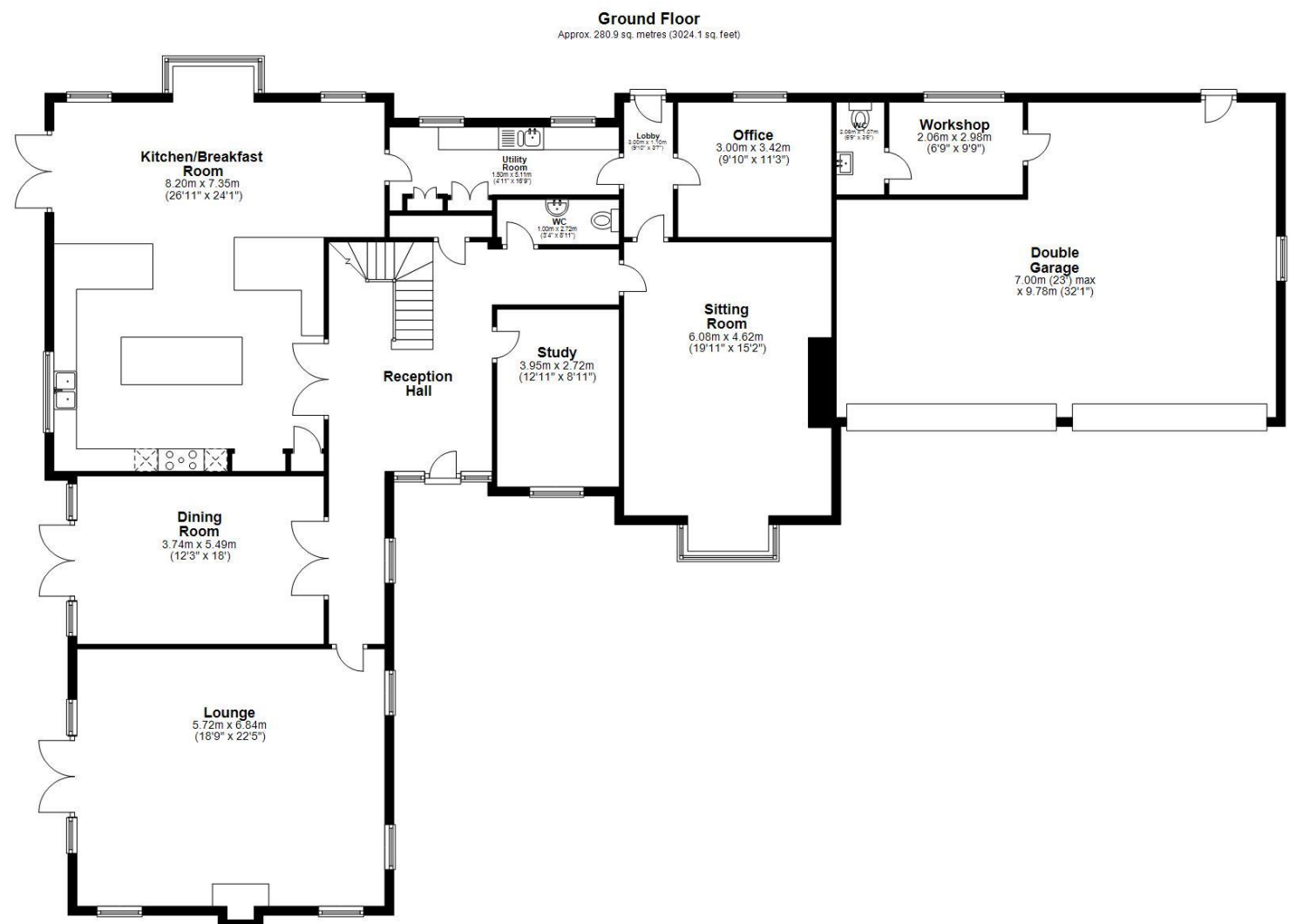


Ashleigh Sundin
0191 223 3500
ashleigh.sundin@sandersonyoung.co.uk









Total area: approx. 539.0 sq. metres (5801.8 sq. feet)
Hayworth House, Medburn



Externally, the property benefits from a gated entrance leading into a substantial driveway with parking for multiple vehicles and access to the large double integral garage, which features a gym/workshop and WC to the rear | Lovely wrap around gardens which are laid to predominantly to lawn with a paved patio area, ideal for entertaining during the summer months | Stunning countryside views and direct country walks.

A truly special and high-quality, individual home built to an exacting standard and traditional style with specialist feature brickwork and Victorian chimney pots for which early viewings are highly recommended.



Hayworth House

The Avenue, Medburn

