



10 Yetlington Drive

Gosforth



SANDERSON
YOUNG



10 Yetlington Drive Gosforth, NE3 4YX

This very good quality, detached family home is situated within the highly desirable Kingsmere estate in Gosforth, just off Salters Road. The beautifully presented property has been extended by the current owner and now offers a fabulous open plan kitchen, dining and living area with doors to the private rear courtyard garden.

The Kingsmere estate offers easy access to the amenities of Gosforth High Street and Ashburton Village, as well as to outstanding schooling.

Price Guide:

Offers Over £395,000





The accommodation comprises: Ground Floor: Porch with cloaks storage | Entrance hallway | Generous living room with gas fireplace and bay window overlooking the front garden | Fabulous open plan kitchen, dining and living area with French doors onto the rear courtyard garden; the kitchen is well equipped with modern cabinetry and a large central island | Utility room | Ground floor WC | Access into the garage

First Floor: Large principal double bedroom suite with built in wardrobes and en suite shower room/wc | Two further bedrooms, one of which is a good sized double and one is a single room | Extremely well presented and fully renovated family bathroom/wc with three piece suite

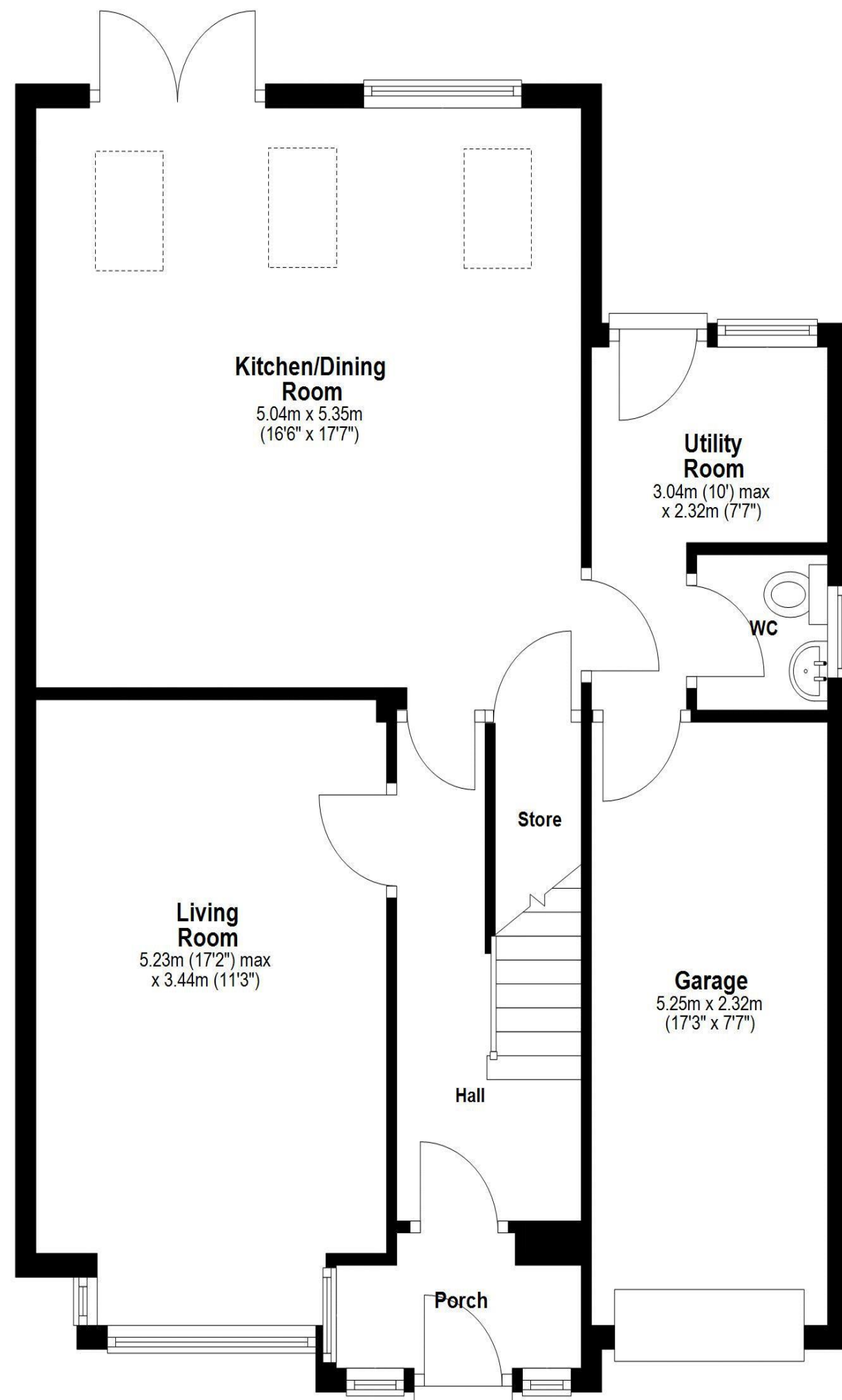


Emma Doran
0191 213 0033
emma.doran@sandersonyoung.co.uk



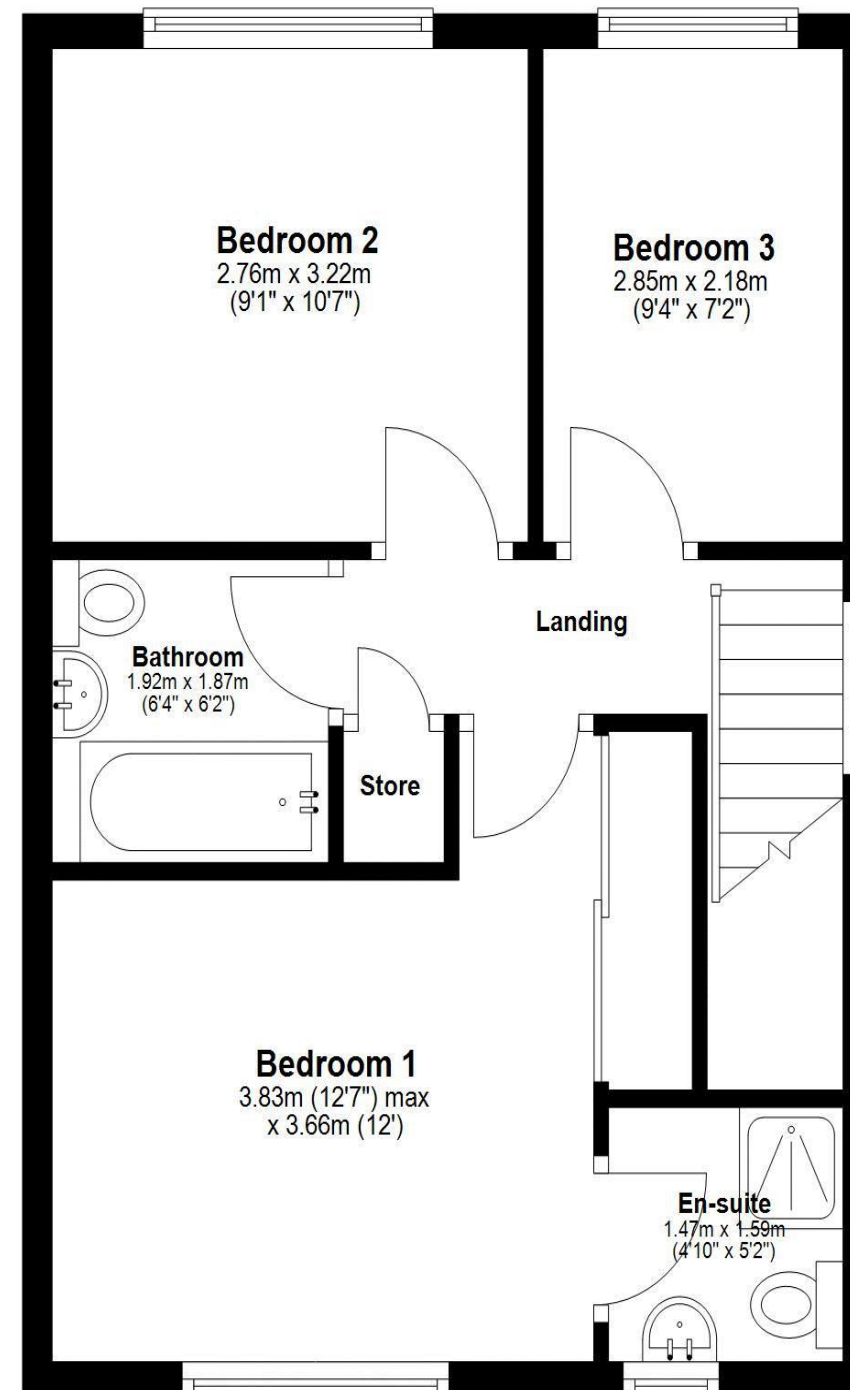
Ground Floor

Approx. 71.9 sq. metres (774.4 sq. feet)



First Floor

Approx. 41.0 sq. metres (441.4 sq. feet)



Externally, 10 Yetlington Drive offers a lawned front garden, a single garage, off street parking for one vehicle and an electric car charging point. The rear courtyard garden is predominantly block paved with mature borders and is very private due to the mature trees which surround the property.

Total area: approx. 112.9 sq. metres (1215.8 sq. feet)

10 Yetlington Drive

Gosforth

