



54 Moor Court

Gosforth



SANDERSON
YOUNG



54 Moor Court Gosforth, NE3 4YD

Spanning over 1,000 sq/ft of living space, this luxury two bedroom apartment is positioned to the fifth floor of this imposing Art Deco building, with southerly views over the Town Moor.

This stylish apartment is well presented throughout, with two fully refurbished shower rooms, and two large double bedrooms.

Price Guide:
Offers Over £340,000



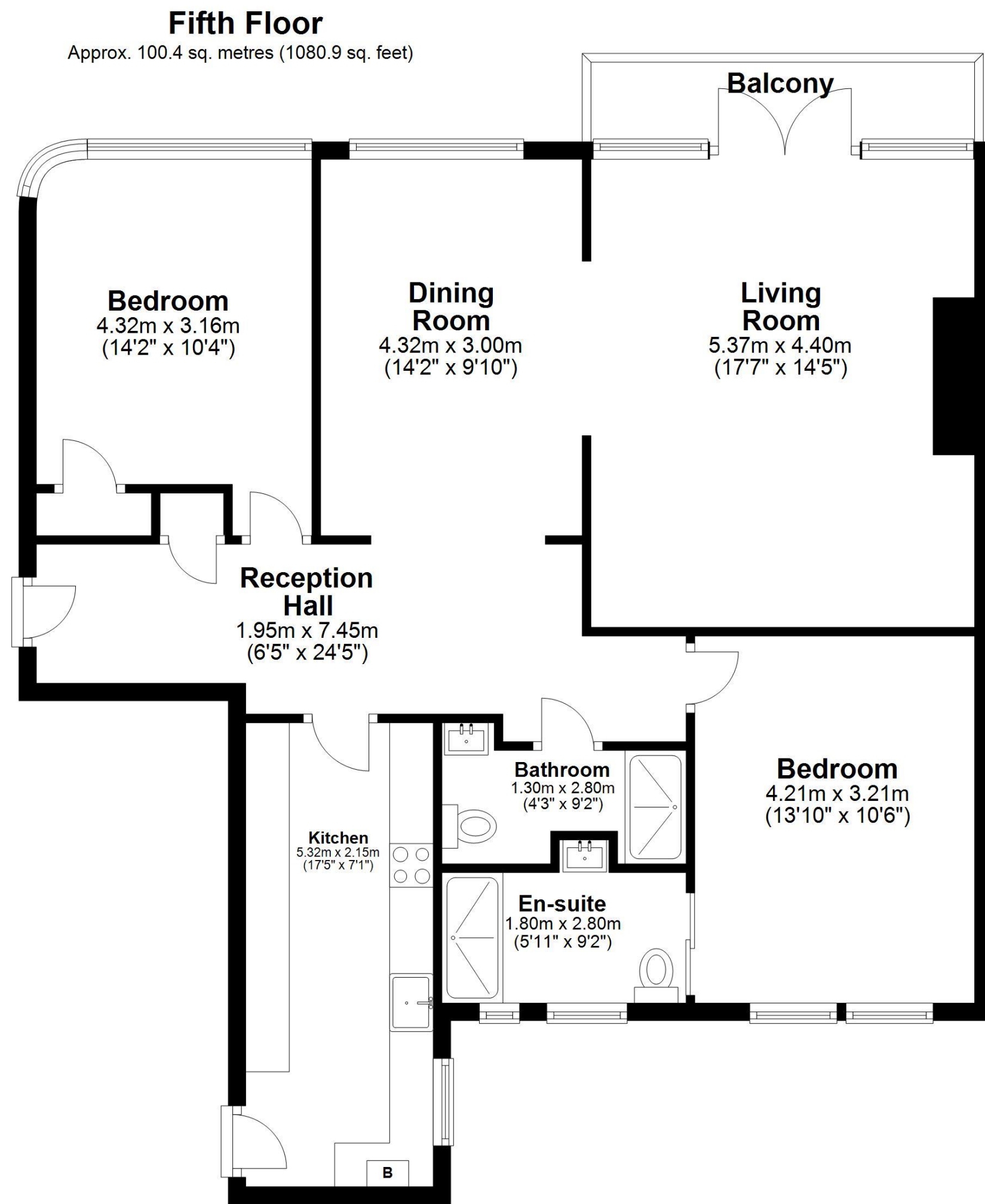


The internal accommodation comprises: Communal entrance with lift and stair access to all floors | Private entrance | Spacious central hallway | Modern kitchen with integrated appliances throughout | Living room with gas fireplace and south facing glazed doors onto the private balcony | Dining room open to the living room | Bedroom one is a large double with an ensuite wet room/wc | Second double bedroom with fitted wardrobes | Second shower room/wc | Private south facing balcony | Resident & visitor parking | No upward chain



Beth Scott
0191 213 0033
beth.scott@sandersonyoung.co.uk





Total area: approx. 100.4 sq. metres (1080.9 sq. feet)
54 Moor Court, Westfield, -



Externally, there is a generous balcony with south facing aspect and ample resident and visitor parking to the development.

Services: Mains electric, water, gas and drainage | Tenure: Leasehold | Lease Term Remaining: 975 Years | Service Charge: £3036 | Council Tax: Band C | Energy Performance Certificate: C

54 Moor Court

Gosforth

