



Pity Me Cottage

North Side, Morpeth





Pity Me Cottage North Side, Morpeth, NE61 3SJ

An impressive, five bedroom stone built detached house, designed and built by the current owners in 2003, with fabulous accommodation of around 4700 sq.ft, and located on a generous private site of circa 4 acres. with landscaped formal gardens, paddock enclosures, decked terrace seating areas, Summerhouse, workshop/barn and an integral double garage - an ideal equestrian property in a quiet rural location.

Pity Me Cottage at North Side, is ideally located for easy access to the market town of Morpeth with its wide range of amenities, shops, cafes and restaurants, as well as excellent schooling for all ages.

The A1 provides excellent transport links to Newcastle to the south and Scotland, with a East Coast & Lumo main line railway station at Morpeth with regular direct services to London's Kings Cross, Edinburgh Waverley and Newcastle - Newcastle International Airport is also located approximately 30 minutes away

Price Guide:

Offers Over £950,000

5

🛏 5 🛋 3 🚗 4 🏠 D







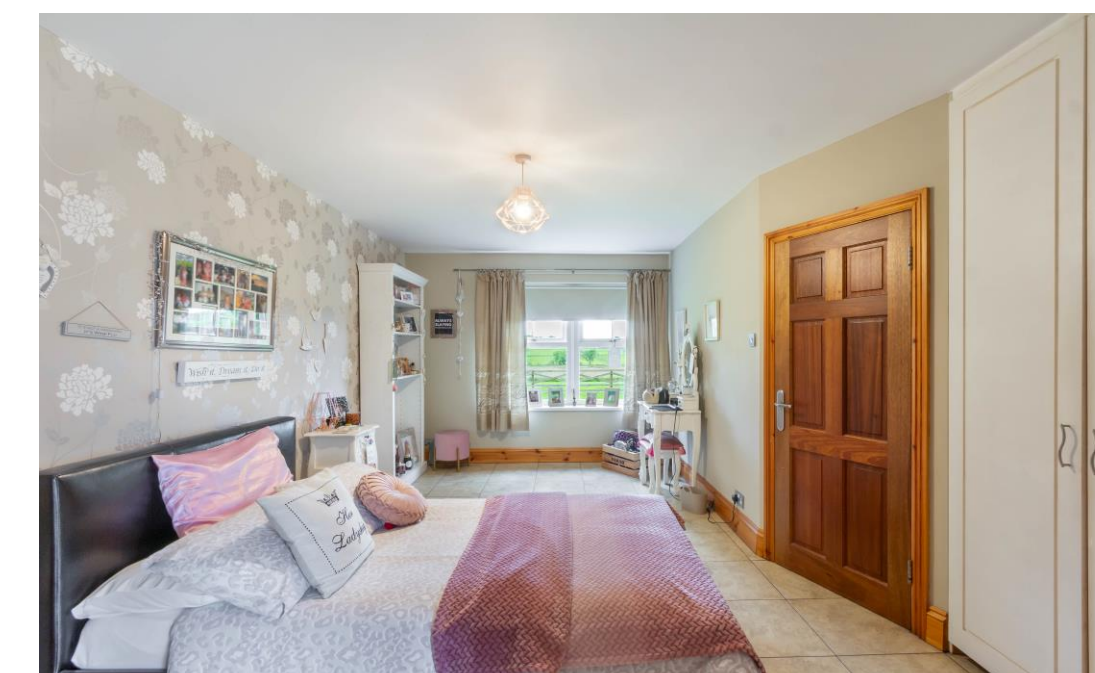


Ground floor - Vestibule | Impressive reception hallway with a wrought iron spiral staircase leading up to the first floor bedrooms and built in storage | Double doors open to a magnificent sitting room with a stone fireplace with a cast iron wood burning stove, lovely maple wood flooring - a glazed door opens to the newly created decked terrace & pergola (2024) and double doors open to the adjoining dining room | Superb formal dining room overlooking the gardens with a maple wood floor | Fabulous open plan family kitchen/living area with a range of cream cabinets with oak worktops, a central island with breakfast bar, space for a range cooker, integrated appliances include a microwave, fridge/freezer and dishwasher, | Utility room with a range of fitted cabinets, and plumbing for a washing machine and tumble dryer. There is also access into the double garage.

Returning to the main hallway | Generous principal bedroom with a walk in dressing room and views over the garden | Ensuite shower room with a double length shower, basin and WC | Two further well presented ground floor double bedrooms, with built in wardrobes | Jack & Jill bathroom with a shower over the bath, basin and WC | Fourth good sized fourth double bedroom with space for freestanding bedroom furniture | Family bathroom with a 'Pharo' spa bath and corner multi jet shower, twin wash hand basins in a tiled vanity cabinet, bidet and WC.



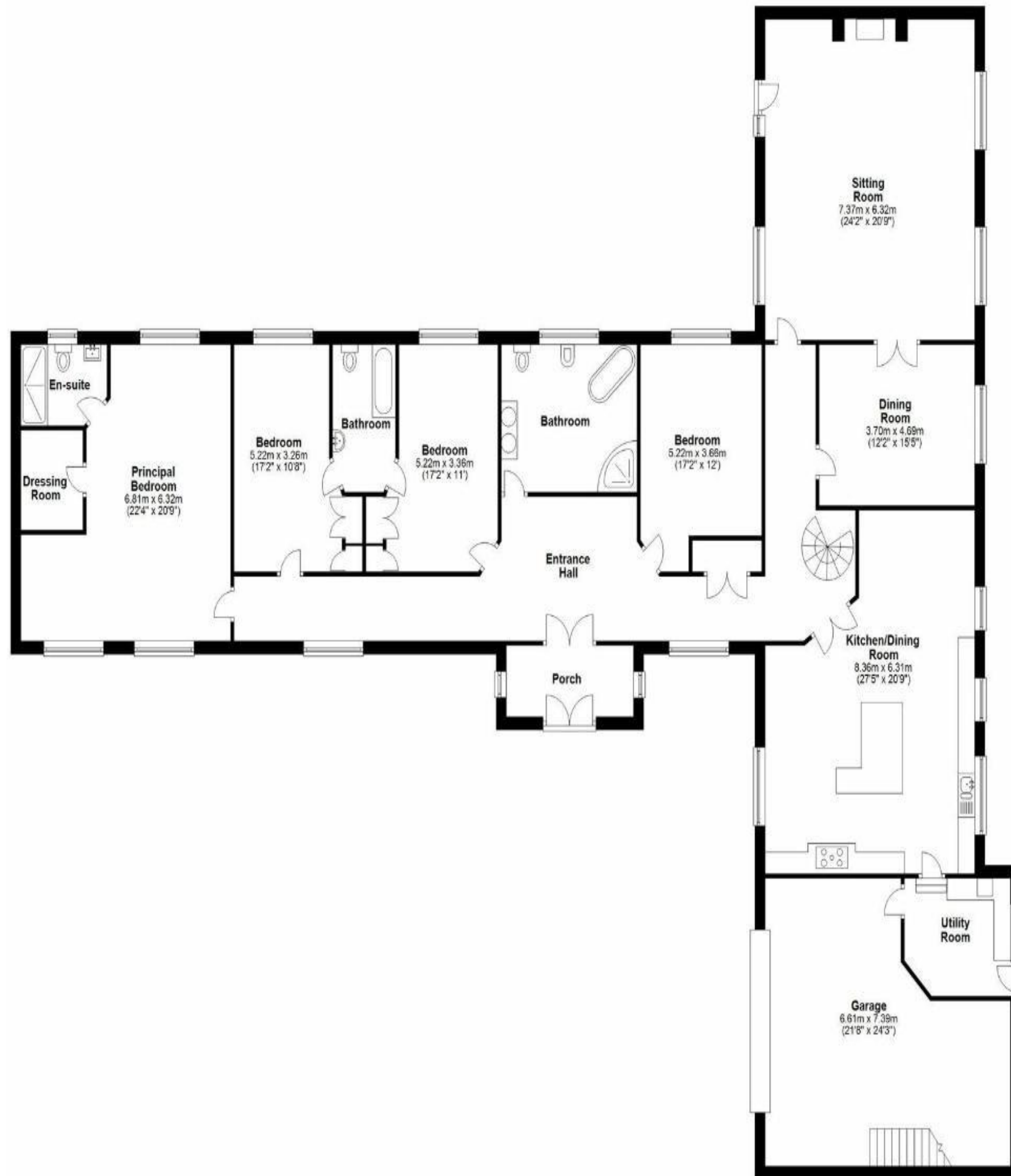
Ashleigh Sundin
0191 223 3500
Ashleigh.sundin@sandersonyoung.co.uk







Pity Me Cottage, North Side, Morpeth, Northumberland



Total area: approx. 438.4 sq. metres (4719.1 sq. feet)

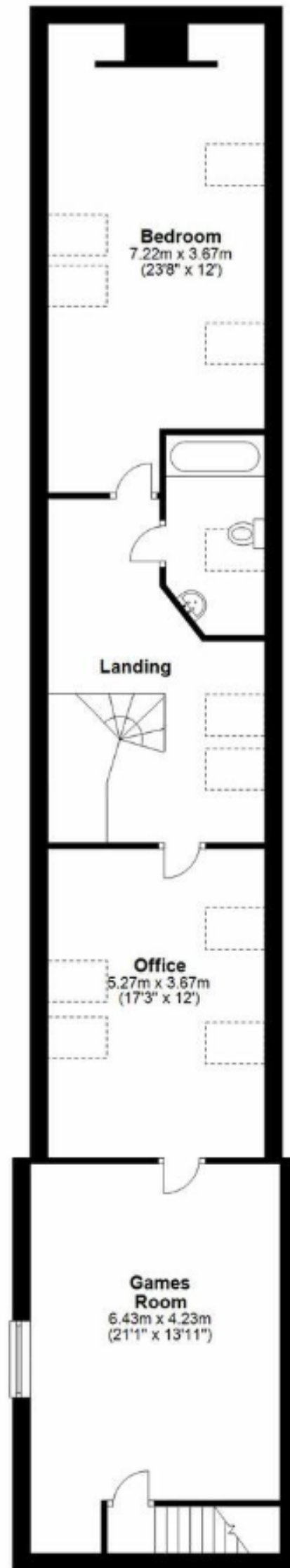


First floor - the spiral staircase leads up to a large & versatile landing with eaves storage and two Velux windows | Fifth large double bedroom with four Velux windows, built in storage | Bathroom with a free standing roll top bath, basin and WC | Office/Study, which could be utilised as a further 6th bedroom | Games room/home gym located above the garage with an internal staircase down into the garage.

Externally - Pity Me Cottage is approached by a gravel driveway with a turning circle that leads to a paved parking area in front of the integral double garage with an electric roller door | There are extensive lawns surrounding the house, and a side access gate leads to a large patio with a wooden gazebo | Superb Timber Summerhouse with fully fitted bar, electricity and lighting | Large paddock surrounding the property | Double garage with an electric up and over door, and an internal staircase leading up to the games room. The gravelled hard stand areas includes a shed and double glazed and insulated workshop/barn, ideal for stabling.

Planning permission been granted for 12 x 18m2 agricultural building (REF: 19/O0386/FUL).

Services: Mains electric and water | Oil Central Heating | Tenure: Freehold | Council Tax: Band G | Energy Performance Certificate: Rating D



Total area: approx. 438.4 sq. metres (4719.1 sq. feet)





Pity Me Cottage

North Side, Morpeth

