



29 Montagu Court

Gosforth



SANDERSON
YOUNG



29 Montagu Court Gosforth, NE3 3JL

A well presented, three bedroom apartment, positioned on the 10th floor of the tower block in Montagu Court with excellent open views from the private south facing balcony over the Town Moor to the Newcastle United Golf Course.

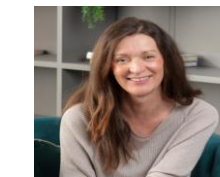
With well proportioned accommodation throughout, the apartment boasts three bedrooms, two reception rooms, a kitchen/diner and a large south facing balcony.

Price Guide:
Offers Over £475,000





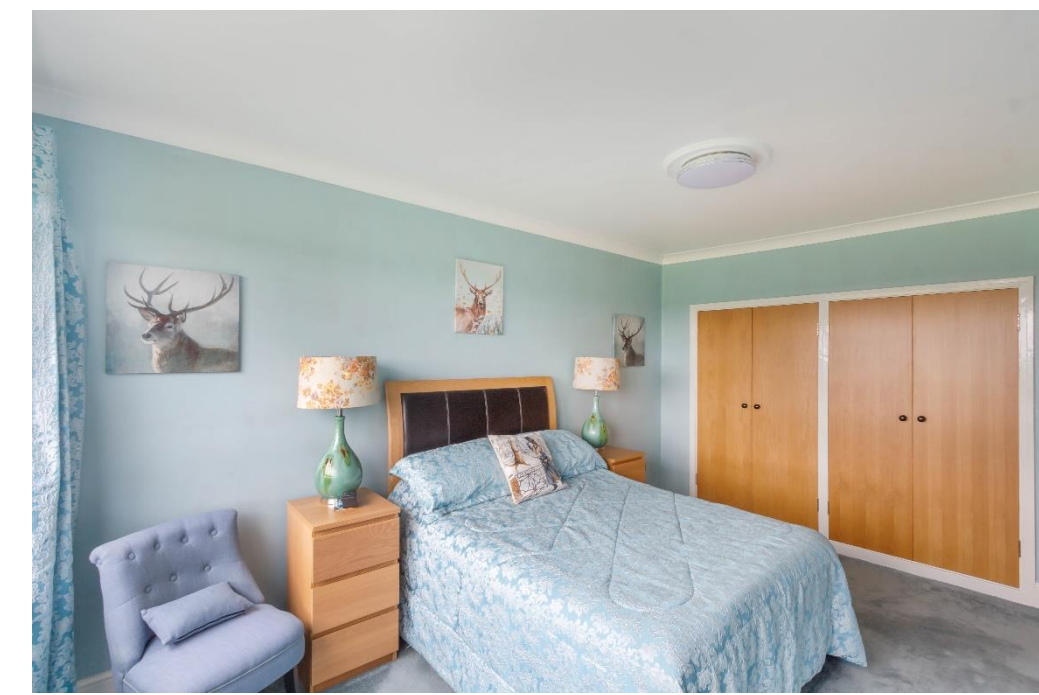
The internal accommodation comprises: Secure communal entrance | Lift and stair access to all floors | Reception hallway with numerous storage cupboards | Cloakroom/wc | Dining room | Sun room with views over the Town Moor and access to the balcony | Sitting room with French doors and picture windows to the balcony | Modern kitchen with integrated appliances | Bedroom hallway with built in storage | Master bedroom with dressing area and walk in wardrobe | Refitted ensuite shower/wc | Two further double bedrooms, one of which benefits from fitted wardrobes | Shower room/wc | Garage and resident/visitor parking



Lizzie Beattie
0191 213 0033
lizzie.beattie@sandersonyoung.co.uk



Floorplan to be included.



Services| Mains: Electric, Gas, Water, Drainage | Tenure:
Leasehold | Lease Term Remaining: 942 Years | Service
Charge: £6144.32 Per Annum | Council Tax: Band G |
Energy Performance Certificate: Rating TBC

29 Montagu Court

Gosforth

