



28 Collingwood Crescent

Darras Hall, Ponteland



SANDERSON
YOUNG



28 Collingwood Crescent Darras Hall, Ponteland, NE20 9DZ

DEVELOPMENT OPPORTUNITY - Three bedroom detached bungalow requiring updating, with garden plot approx 0.3 acres, with Planning Permissions by the Darras Hall Committee and awaiting final approval from the Northumberland Council REF 24/01115/FUL to create a large five bedroom, two storey luxury family home - **NO UPWARD CHAIN**

A great development opportunity to refurbish the existing three bedroom detached bungalow, or fully rebuild & extend the property to create a much larger, modern family home Ref 24/01115/FUL, ideally placed off Middle Drive for easy access to Ponteland village, and excellent Ponteland schools for all ages.

Price Guide:

Guide Price £575,000





Accommodation - Reception hallway with sliding door cloaks cupboard | Family room/4th bedroom with patio doors to the rear garden | Superb open plan L shaped living/dining room with a feature fireplace with raised slate hearth, central shelved unit and two sets of sliding patio doors to the front | Kitchen/breakfast room with a window and barn style door. Bedroom hallway | Shower room/wc with two large storage cupboards | Bedroom one - large double with two sliding door fitted wardrobes | Bedroom two - Double bedroom with sliding door built in wardrobe with overhead storage | Bedroom three - single bedroom with a built in sliding door wardrobe | Bathroom with a coloured four piece suite.

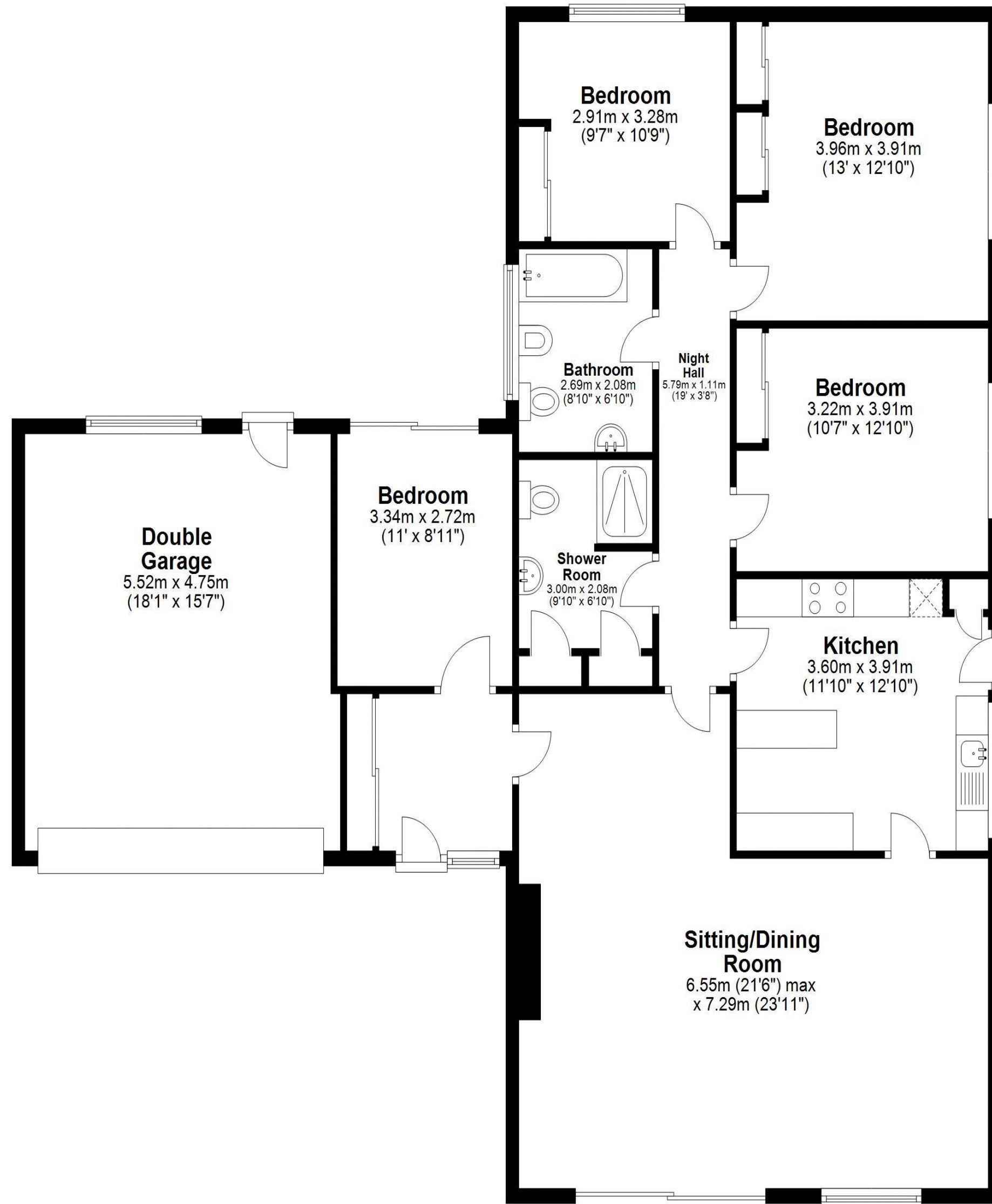


Julie Douglas
0191 213 0033
julie.douglas@sandersonyoung.co.uk



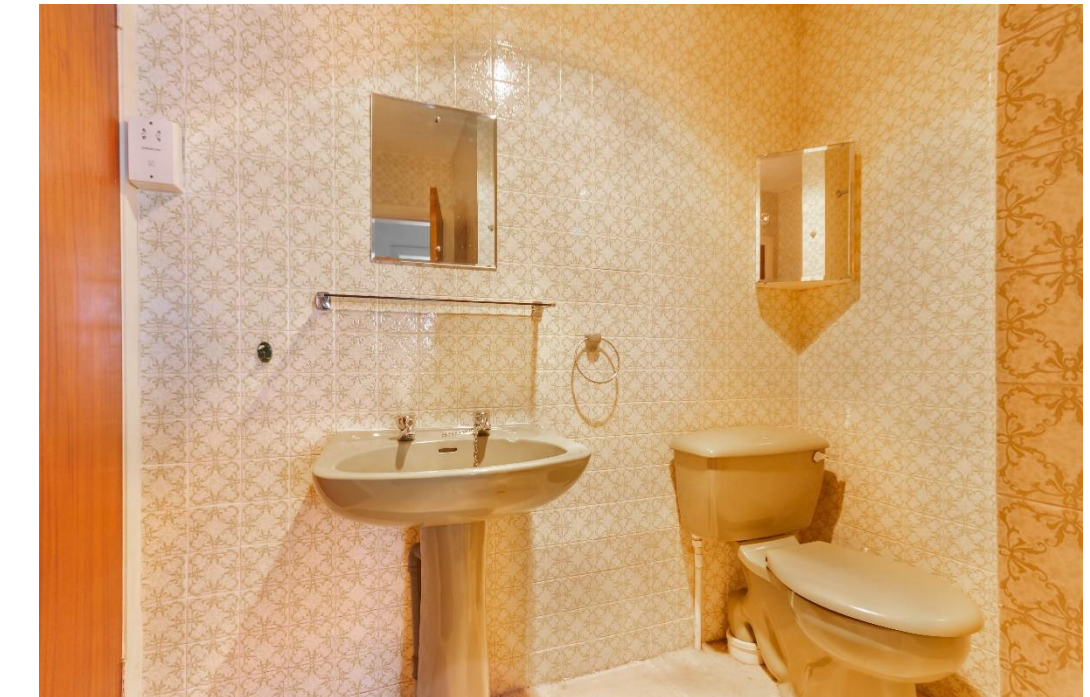
Ground Floor

Approx. 155.0 sq. metres (1668.5 sq. feet)



Total area: approx. 155.0 sq. metres (1668.5 sq. feet)

28 Collingwood Crescent, Ponteland, -



Externally - the bungalow has a block paved driveway with parking for several cars, and an attached double garage with electrically operated roller door. The front and rear gardens are lawned with a hedge to the rear boundaries and a stone wall to the front.

28 Collingwood Crescent

Darras Hall, Ponteland



SANDERSON
YOUNG

