



10 Bede Walk

Gosforth



SANDERSON
YOUNG



10 Bede Walk Gosforth, NE3 1BE

Rare - A detached bungalow redesigned as a highly stylish modernist house providing over 1050 sq. ft. of internal living space to include three double bedrooms, two fully refitted bathrooms and an incredible open plan kitchen / living area leading onto a private landscaped terrace.

Situated just off Church Road, Sundial Cottage with its distinct facade of silver birch, pink rendering and hedge-lined picket fence is noticeable from any end of this pedestrianised walkway of detached single story homes (of Bede Walk).

The property is situated within walking distance of Gosforth High Street with its shops, cafes and restaurants, as well as being close to South Gosforth Metro Station offering easy access links into Newcastle City Centre and throughout the region.

Price Guide:
Offers Over £350,000





The property has recently undergone a complete transformation, with a large rear extension accommodating a stunning open plan kitchen/living room.

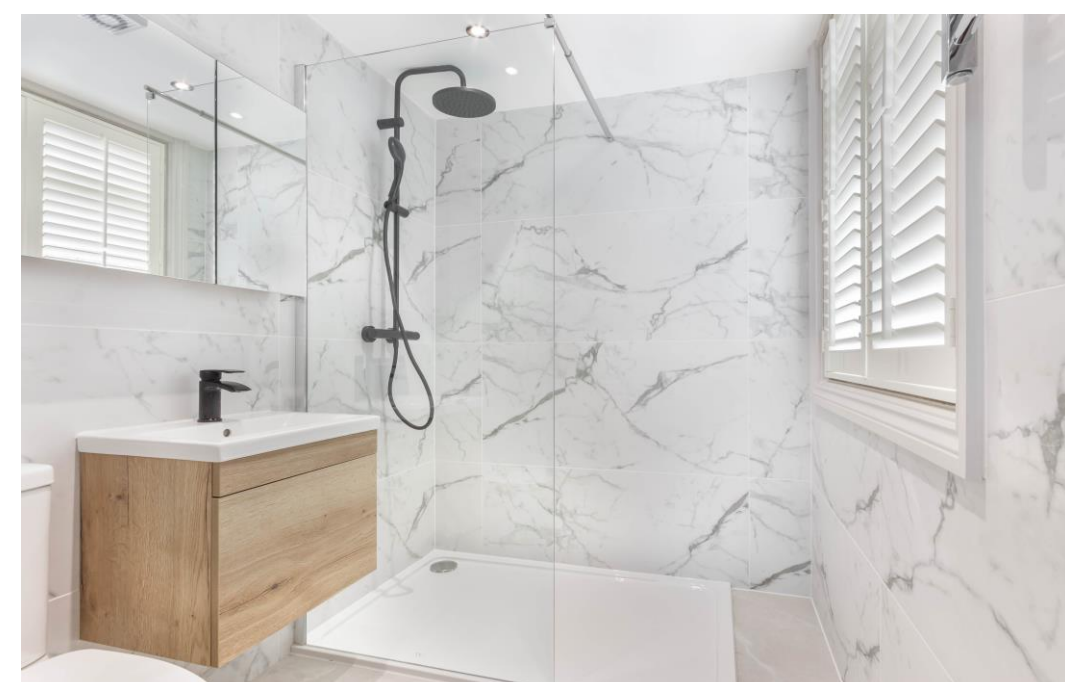
The internal accommodation comprises: Entrance Hallway | Bedroom one is situated to the front and benefits from fitted open wardrobes and a newly built ensuite shower room | Bedroom two is situated to the southern elevation and also benefits from fitted open storage | Bedroom three is a versatile space with French doors onto the front garden and is currently utilised as a study | Family shower room three piece suite has been refitted to an extremely high standard.

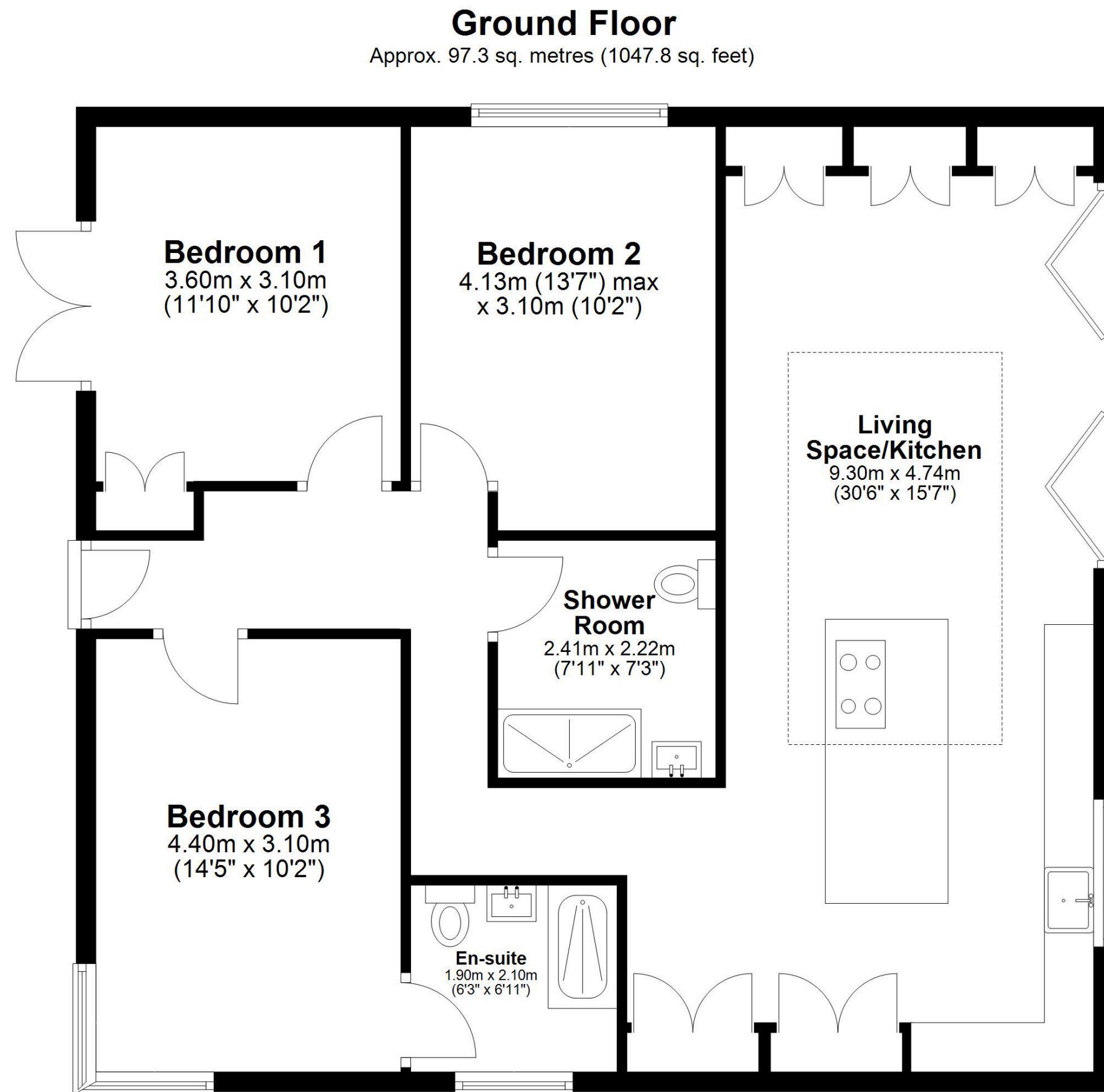
The rear of the property has been completely remodelled to offer a modern, light-filled open plan kitchen / living and entertaining space. Large glazed bifold doors span along most of this room, allowing a panoramic view of access to the private terraced garden.

This main living space is defined by a large glazed sky roof over a generous kitchen island with an oversized breakfast / dining bar, smart induction cooker, complete with utility room. The rest of the handleless cabinetry houses more storage space along with eight units of various electrical appliances from Miele and Siemens, including an integrated clothes washer / dryer and Caple wine fridge.



Julie Summerbell
0191 213 0033
julie.summerbell@sandersonyoung.co.uk





Total area: approx. 97.3 sq. metres (1047.8 sq. feet)

Plan produced using PlanUp.

10 Bede Walk, South Gosforth



Externally, the property benefits from newly landscaped garden with secure gated fob entry system and gate intercom | The front garden is laid predominantly to lawn with fenced and hedged boundaries | The southwest rear garden is block paved in part and lawned in part with a fantastic BBQ outdoor entertaining space to enjoy in the warmer months.

Immaculately presented throughout, this is an extremely unique opportunity to purchase a turnkey single storey home within Gosforth and internal inspections are strongly advised to fully appreciate the quality of accommodation on offer.

Services: Mains Gas, Electricity, Water and Drainage | Tenure: Freehold | Council Tax: Band A | Energy Performance Certificate: E

10 Bede Walk

Gosforth

