



1 Grove Park Oval

Gosforth



SANDERSON
YOUNG



1 Grove Park Oval Gosforth

Modern Ground Floor, Two Bedroom Apartment with Private Balcony & Underground Car Parking!

This well presented, purpose built two bedroom apartment, with close to 593 sq.ft, is ideally positioned on the ground floor of this popular development which is located at Grove Park Oval.

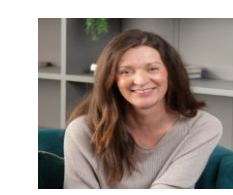
Grove Park Oval, situated just off The Grove and Church Avenue, is well placed within the very heart of Gosforth providing excellent access to Gosforth High Street with its shops, cafes and restaurants, and is also situated a short walk to both South Gosforth and Ilford Road Metro Stations, providing excellent links throughout the regional.

Price Guide:
Offers Over £245,000





The internal accommodation comprises: Communal entrance hall with secure entry phone system | Generous private entrance hallway with store cupboard | Open plan kitchen, living & dining room with integrated appliances and granite work surfaces to the kitchen area and sliding doors to the balcony | Master bedroom with ensuite shower room and fitted storage | Bedroom two is another double with fitted storage | Three piece suite bathroom | Private balcony | Allocated secure car parking space in the underground car park.

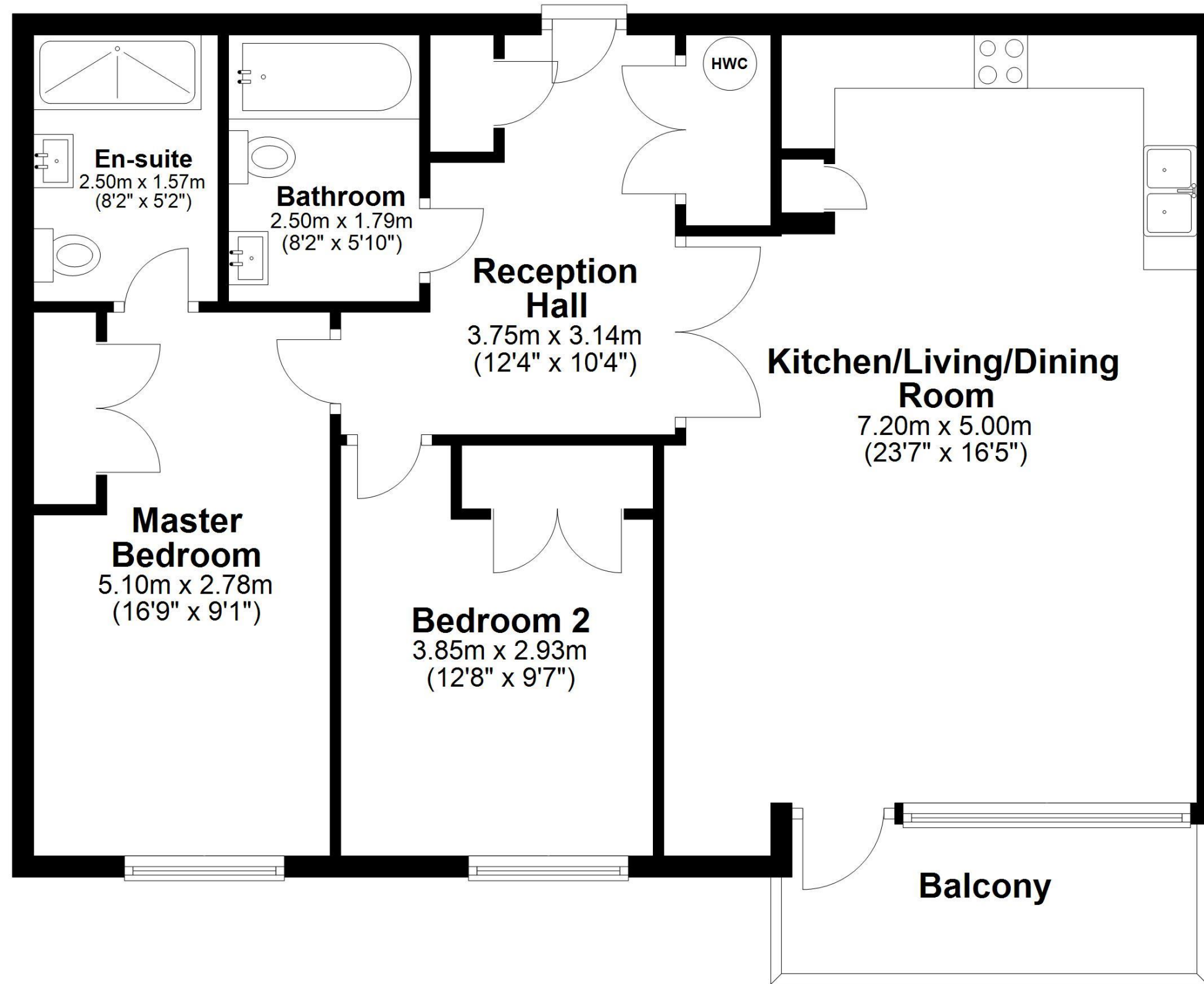


Lizzie Beattie
0191 213 0033
lizzie.beattie@sandersonyoung.co.uk



Ground Floor

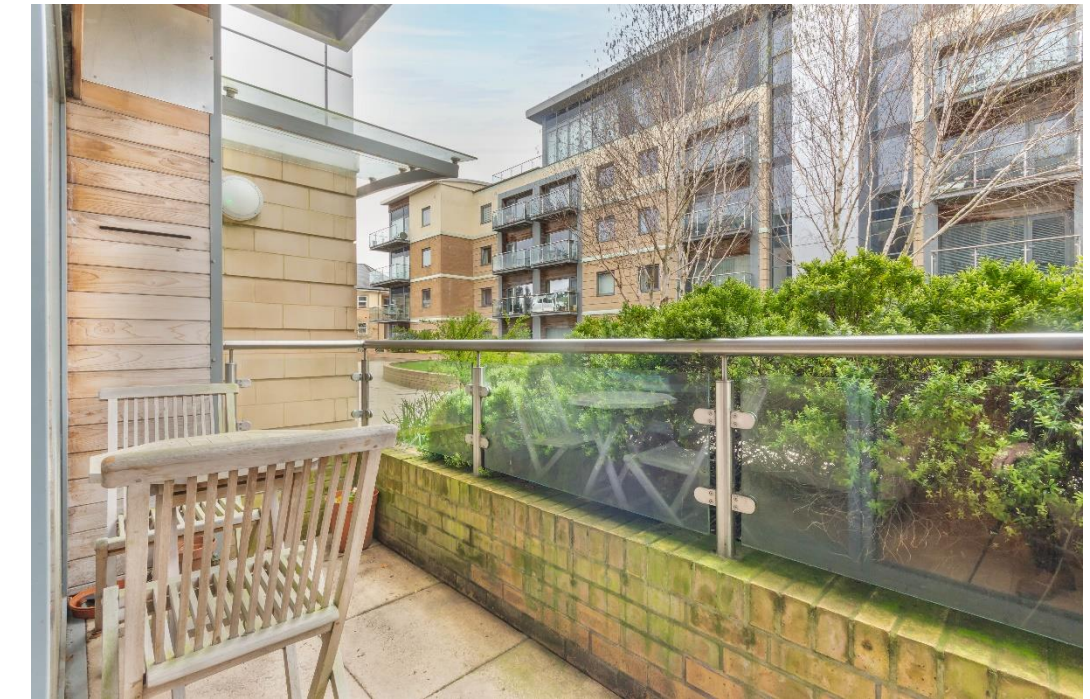
Approx. 81.6 sq. metres (878.3 sq. feet)



Total area: approx. 81.6 sq. metres (878.3 sq. feet)

Plan produced using PlanUp.

1 Grove Park Oval, Gosforth



Offered with no onward chain, early viewings are highly recommended to avoid disappointment.

Services: Mains electric, water and drainage | Tenure: Leasehold | Lease Term Remaining; 198 years | Ground Rent; £250 Per Annum | Service Charge; £3200 | Council Tax: Band C | Energy Performance Certificate: Rating TBC