



# LAUREL QUAYS

NORTH SHIELDS



# Laurel Quays

A collection of studio, one & two bedroom apartments





## Location

Laurel Quays is ideally placed to enjoy the stunning Marina just a stone's throw from the development, with the added benefit of cycle routes along the river leading to North Shields' bustling Fish Quay. A hive of local activity, this regenerated area is a real social hub, with esteemed neighbourhood restaurants and bars.

Royal Quays Outlet & Independent Shopping Centre is positioned just metres from Laurel Quays, providing shopping outlets and cafes on the doorstep.

Tynemouth, with its beautiful independent shops and cafes, restaurant culture and eclectic markets, is just a ten minute drive away.

Further afield, Newcastle is an easy commute by car or public transport, with Percy Main Metro Station less than a mile away from the development.

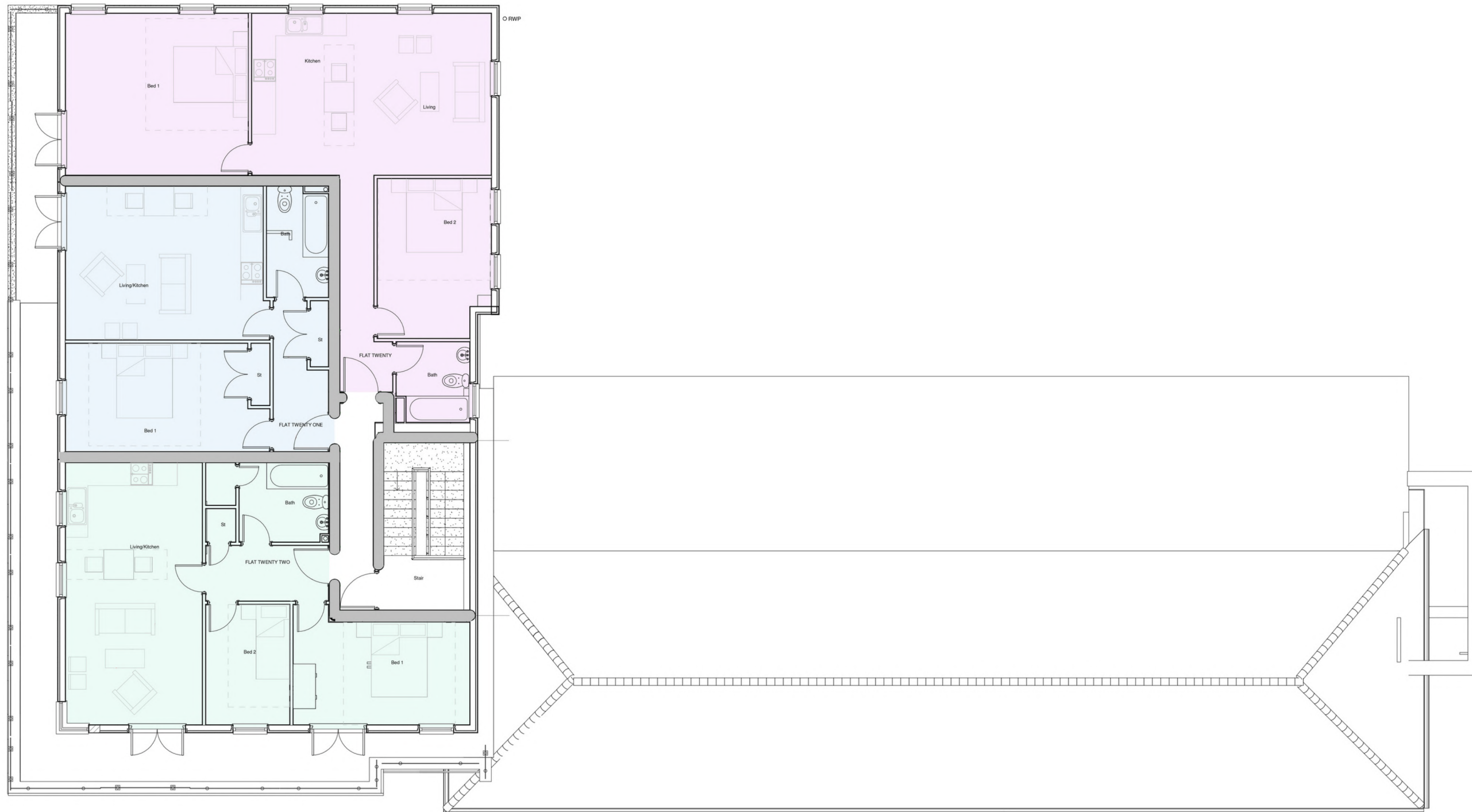
# Floorplan - Ground Floor



# Floorplan - First Floor



# Floorplan - Second Floor





The 22 contemporary apartments are set over three floors and each has been individually designed. Featuring a range of smart studios, stylish one bedroom and luxury two bedroom apartments, there is a home for everyone at Laurel Quays.

All apartments have been tastefully finished, with handleless gloss kitchens fully fitted as standard, and luxury walk in double shower rooms which provide a luxury feel. Neutral flooring and decoration completes the final aesthetic.

On site, there is allocated parking for each property, as well as a secure entry system for the building.







Laurel Quays  
Coble Dene  
North Shields  
NE29 6BF



SANDERSON  
YOUNG

[www.sandersonyoung.co.uk](http://www.sandersonyoung.co.uk)

95 High Street, Gosforth, Newcastle upon Tyne, NE3 4AA



[Contact@sandersonyoung.co.uk](mailto:Contact@sandersonyoung.co.uk)



0191 213 0033