



# 13 Princess Mary Court

Jesmond



SANDERSON  
YOUNG





## 13 Princess Mary Court Jesmond

Superb, two bedroom apartment located on the 3rd floor of this attractive purpose built luxury development in Princess Mary Court, with elevated views from the 'turret style' kitchen over Jesmond, lift and stair access, and allocated parking for one car.

A well presented, two bedroom top floor apartment, located in the 'turret part' of this purpose built luxury development, with excellent elevated views of local area and the attractive communal garden courtyard.

The property has never been available on the open market, having only had one owner who purchased from new in 1999. The flat benefits from lift and stair access, secure gated entry for cars, secure communal entrance, and attractive communal gardens.

---

### Price Guide:

Offers Over £250,000

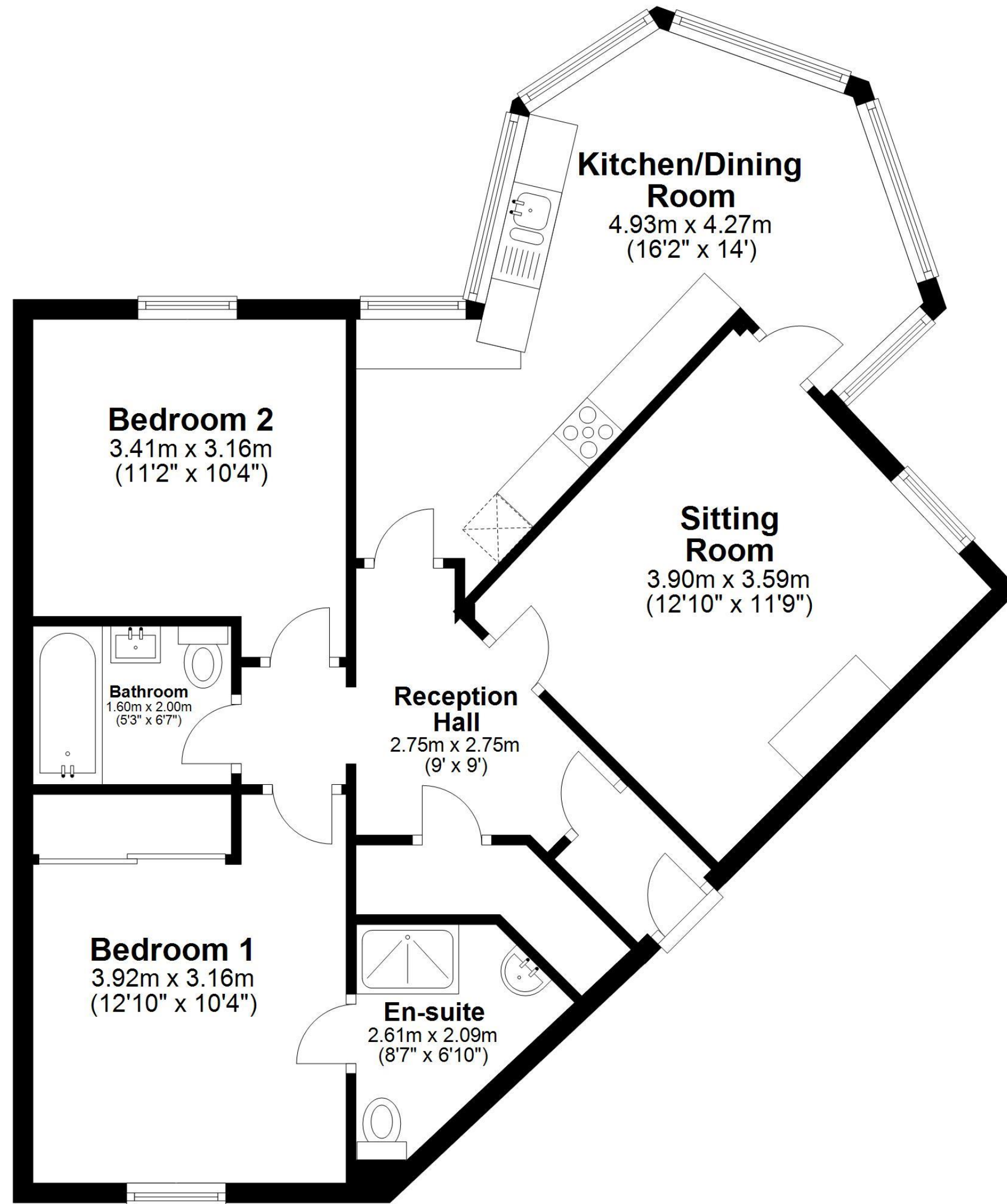
---





## Ground Floor

Approx. 72.9 sq. metres (784.6 sq. feet)



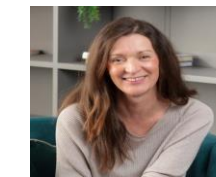
Total area: approx. 72.9 sq. metres (784.6 sq. feet)

**13 Princess Mary Court, NEWCASTLE UPON TYNE**

Reception hallway with large cloaks cupboard | Sitting room with a window giving elevated views | Excellent kitchen/dining room which is well appointed in the circular 'turret' part of the apartment - a range of cabinets and integrated appliances | Master bedroom with fitted sliding door wardrobes | Ensuite shower room | Guest double bedroom with fitted wardrobes | Bathroom/WC.

The apartment benefits from allocated parking for one car, close to the communal entrance of this block within Princess Mary Court.

Services: Mains electric, gas, water and drainage | Tenure: Leasehold | Lease Remaining: 974 Years | Ground Rent: Peppercorn | Service Charge: £3798.56 | Council Tax: Band D | Energy Performance Certificate: Rating C



Lizzie Beattie  
0191 213 0033  
lizzie.beattie@sandersonyoung.co.uk

