



# High Hermitage Holiday Park

Main Road, Ovingham



SANDERSON  
YOUNG





## High Hermitage Holiday Park Main Road, Ovingham

HIGH HERMITAGE HOLIDAY PARK, OVINGHAM A superb newly established 'High Hermitage Holiday Park', located between the popular & historic villages of Ovingham and Wylam on the beautiful River Tyne.

The luxury lodges, are ideal as a base from which to explore the Tyne Valley, Northumberland and Durham, with easy access to the vibrant Newcastle upon Tyne, miles of unspoilt coastline, Hadrian's Wall, and Kielder Water. The holiday homes location gives access for leisure activities for everyone including Salmon fishing, Golfing, Mountain biking, hill and coastal walking, and a number of historic Castles, Museums and Stately Homes.

The luxury Holiday Park, with planned sites for 25 lodges in total, is set in a quiet, low density site of around 12 acres, with mature private woodland, Kitty's Burn, and elevated views south towards over the River Tyne and surrounding countryside. The park has a Reception/Office and Warden, amenity block with toilets & showers, refuse/recycling point and visitor parking.

---

### Price Guide:

From £115,000

---

🛏️ 2 🛏️ 1 🛏️ 1 🏠 N/A





Park Features include | 12 month holiday park | Pet friendly | Quality double glazed and centrally heated lodges | Mains electric and drainage | Allocated parking & additional visitor parking within the park | Standard composite decking | 20 year lease | 12 acre landscaped garden & woodland site | Reception office | Amenity block

The Parkview 2 bedroom lodge from £210,000

The Westwood 2 bedroom lodge from £175,000

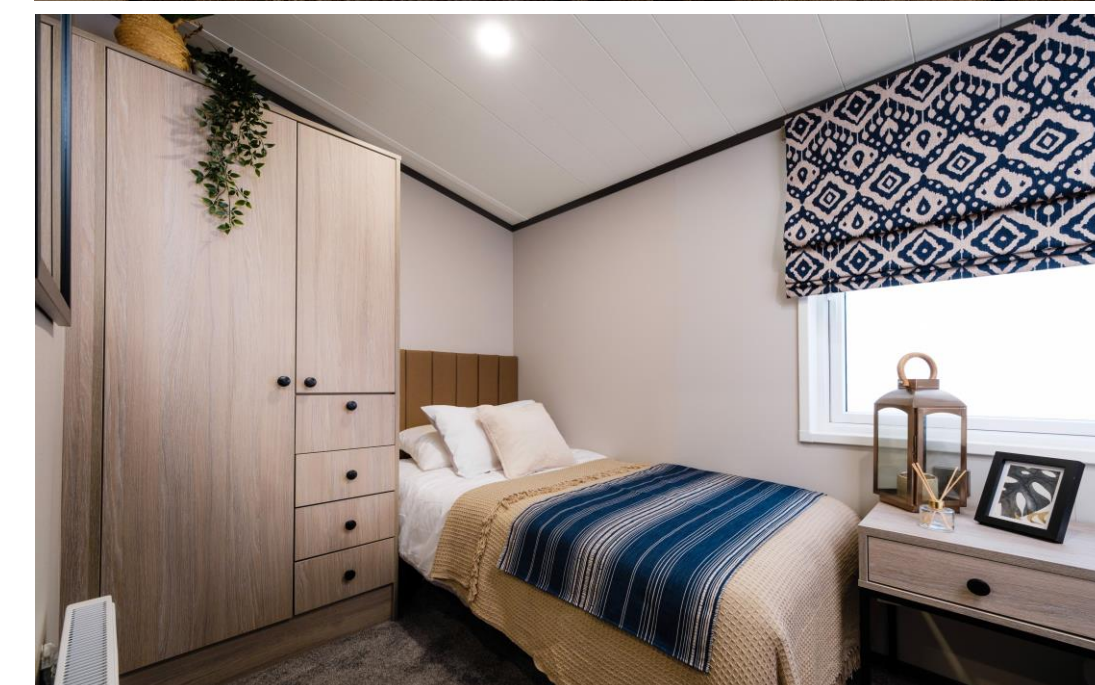
ABI Ambleside 2 bedroom lodge from £125,000 T

he Riverwood 2 bedroom lodge from £115,000

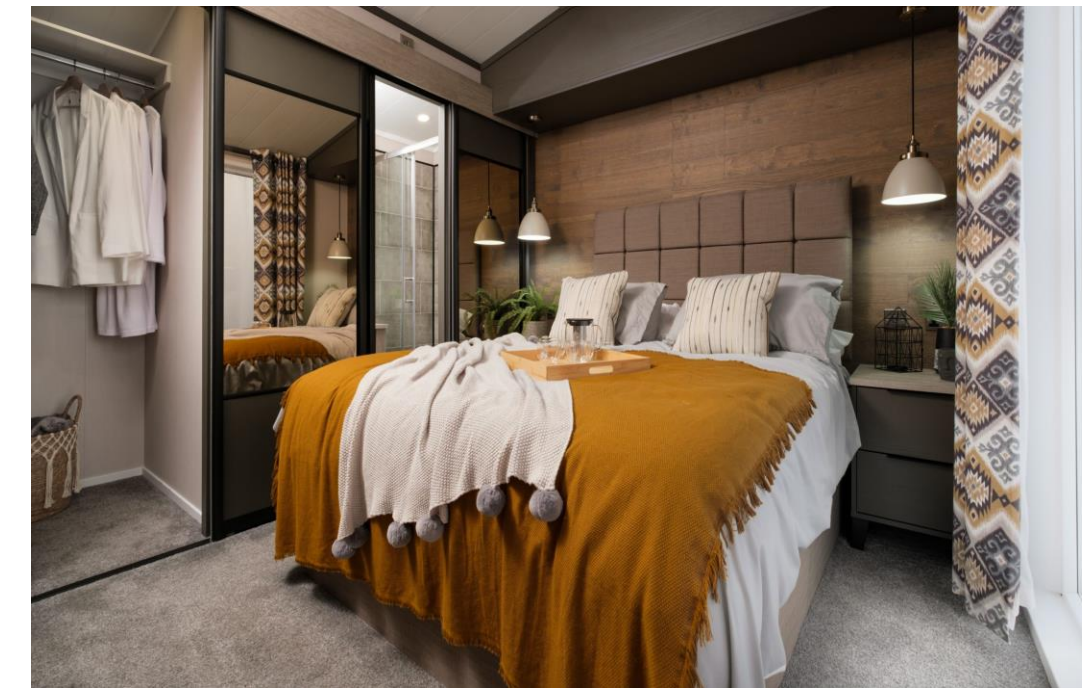
The Langdale 2 bedroom lodge from £117,000



**Julie Douglas**  
0191 213 0033  
[julie.douglas@sandersonyoung.co.uk](mailto:julie.douglas@sandersonyoung.co.uk)







The Park is located between the river side villages of Ovingham & Wylam villages, offering a range of local amenities including village shops, supermarkets, pubs/restaurants - with easy access to Wylam Train Station, with regular services to Newcastle city centre, and to the A69 and A1 for exploring the region.

Approx Distances - Ovingham - 1 mile, Wylam - 1.7 miles, Newcastle International Airport - 10 miles. Newcastle upon Tyne - 12 miles Hexham - 15 miles

Please note: Internal imagery is of The Lakewood, The Parkview & The Riverwood and is for illustrative purposes only.

# High Hermitage Holiday Park

Main Road, Ovingham



SANDERSON

