

Wired,
connected &
switched on,



// The Manchester lamps are part of a public art commission which celebrates Manchester's pioneering achievements in the field of innovation and progress. Each lampshade holds a story woven into its canopy hidden within intricate details, what will you discover?

INNOVATION AND EDUCATION 1903 ART NOUVEAU TIFFANY LAMP

Looking at the design of an Art Nouveau Tiffany lamp, which was a period of design spanning 1890 to 1910, this shade design is inspired by education, which is incredibly important to the city.

Manchester university was officially given a charter in 1903, leading way for a number of very important figures and innovations. The university also houses the oldest library in the English speaking world.





A short walk from Piccadilly Station over the Manchester Curve Bridge brings you to the professional heart of Piccadilly Place.

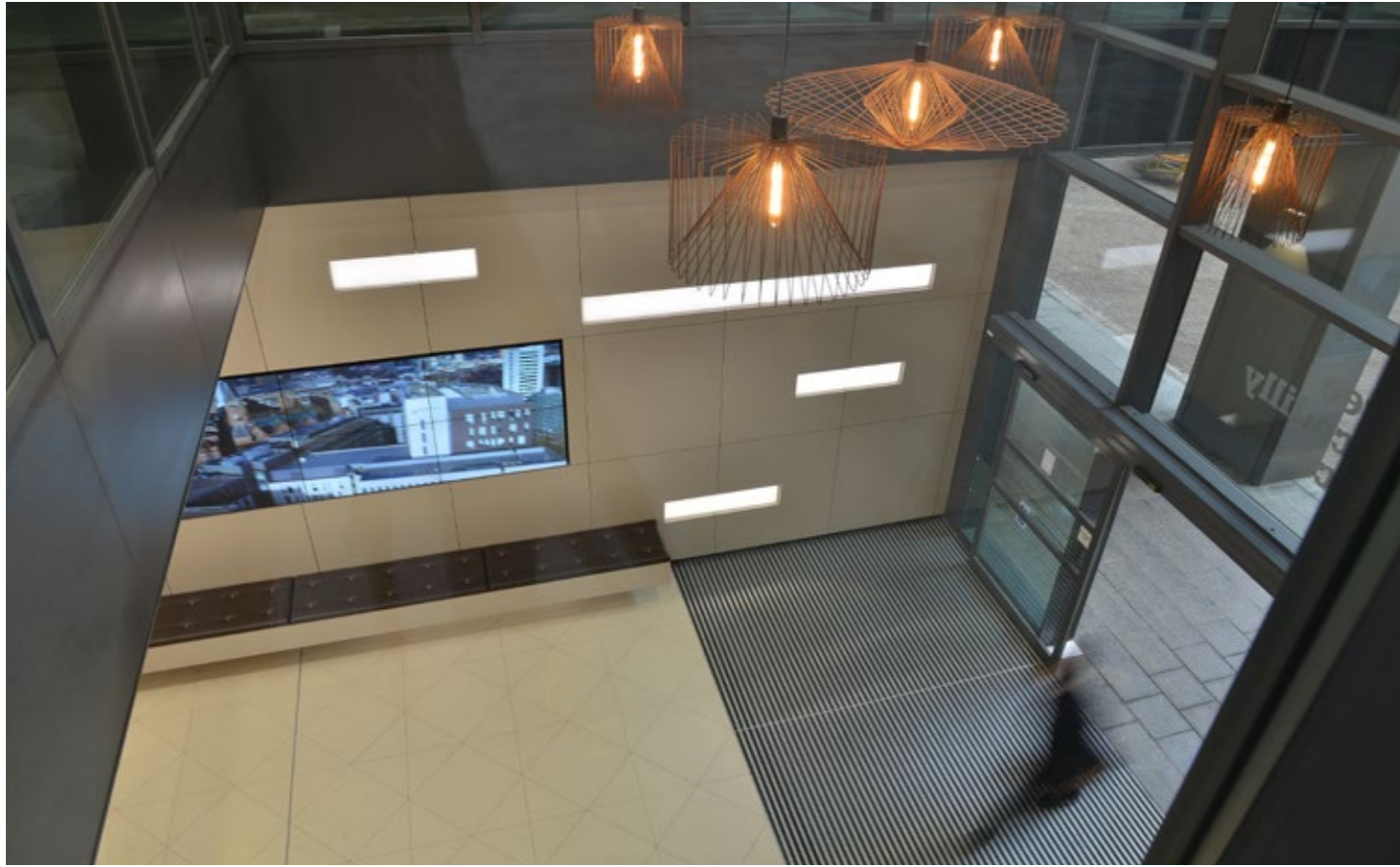
// Piccadilly Place offers all the benefits of a mixed-use development, incorporating office space, a hotel, gym and apartments, all well-served by shops, cafés and restaurants, in a vibrant and accessible environment.

In the privately managed piazza a yearly calendar of tenant activity and engagement enlivens this fantastic communal area. A natural space for occupiers to trade and visitors to meet, shop and enjoy a range of leisure, cafés and restaurants.



The only Wired Certified Platinum development in Manchester City Centre, Piccadilly Place keeps businesses hyper connected.





// With the recent reception full refurbishment in 2018 Q3 and the existing tenants fitting out to such a high standard, your business setting simply doesn't get any better than at Piccadilly Place.

Local,
linked-up
& limitless

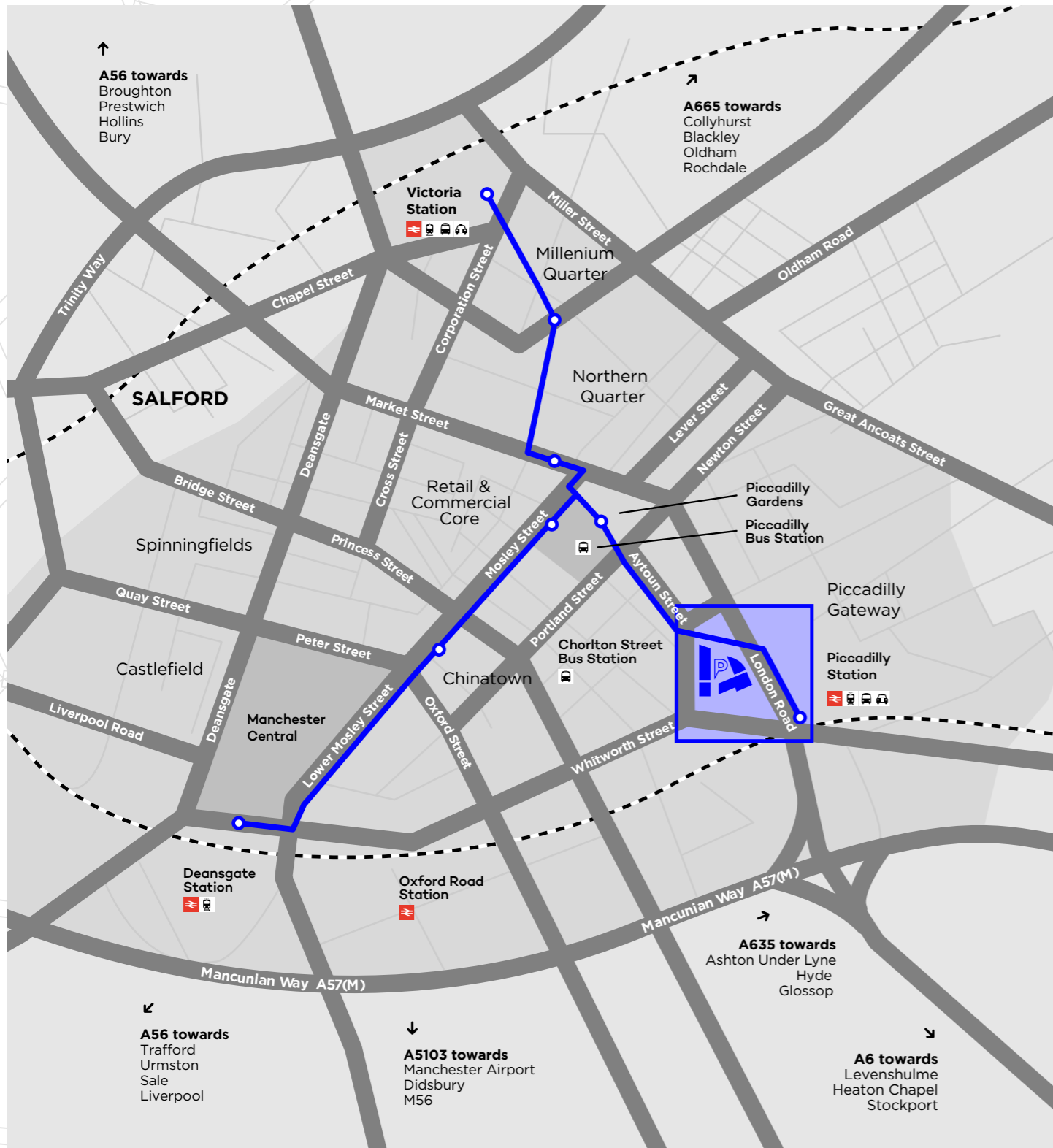


The new vision for our Piazza illuminates the rich history of Manchester.

// **INDUSTRIOUS COMMUNITY**
MID CENTURY TABLE LAMP

This enlarged version of an everyday domestic table lamp celebrates the innovation and hard work of the people of Manchester. A city famous for its 'busy bee' lifestyle, Manchester remains a fast-paced and energetic city which is represented by the honeycomb pattern on the lampshade.

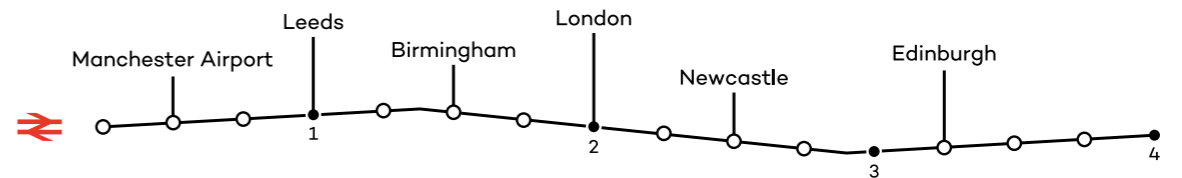




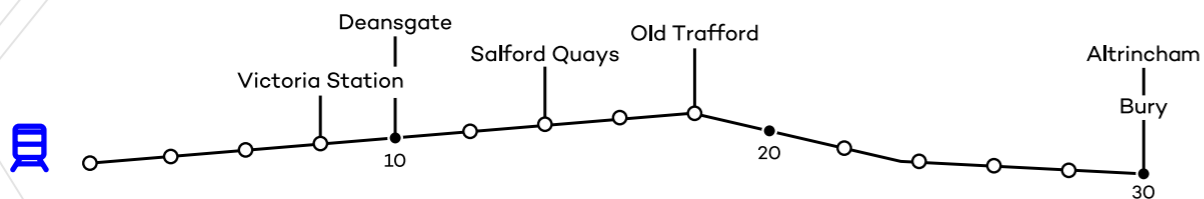
//Walking Distance



//Train routes



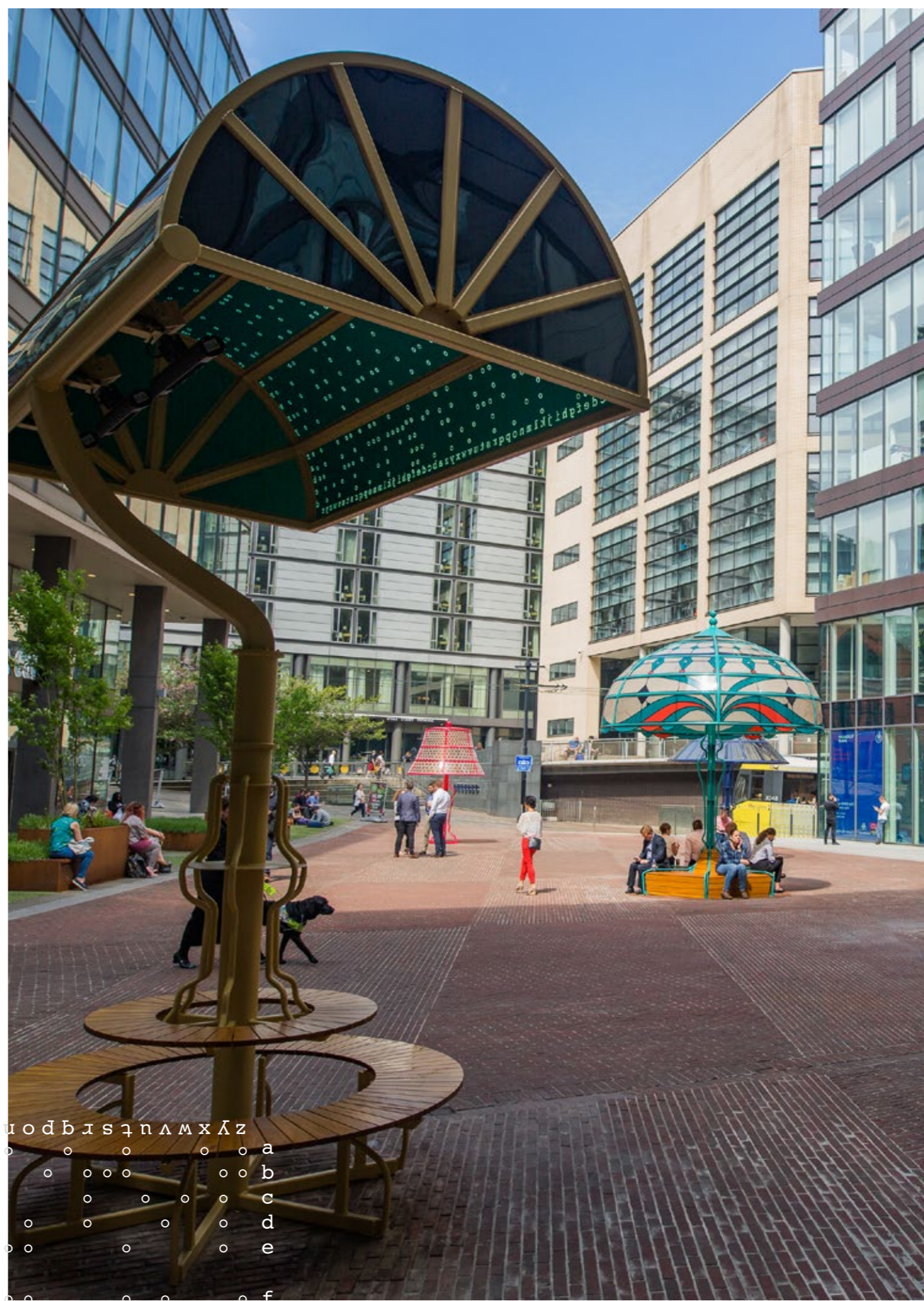
— Metrolink Network

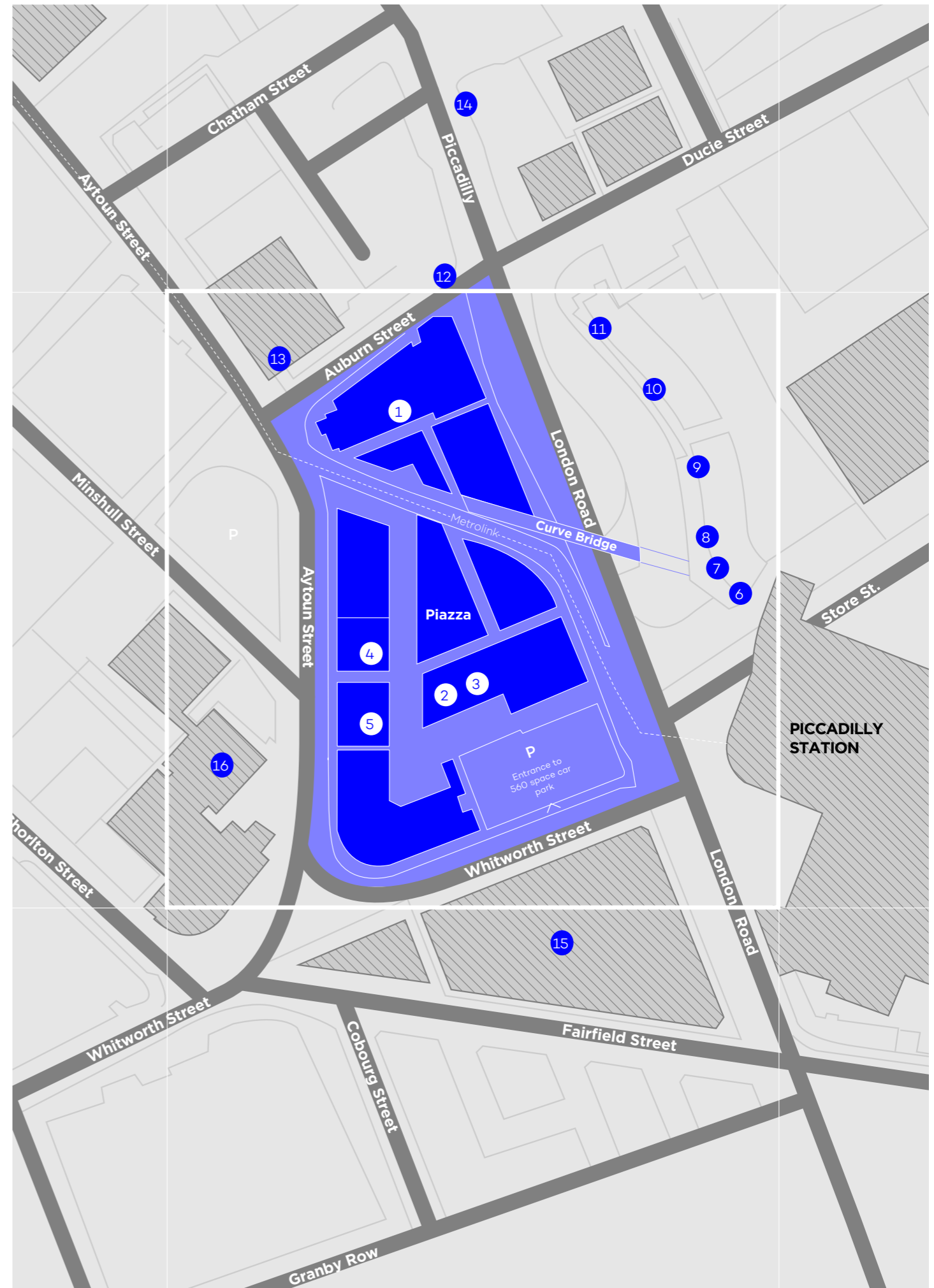


On stream, on trend and on demand

// DEDICATION, PERSEVERANCE AND DISCOVERY
1909 BANKERS DESK LAMP

The banker's desk lamp was popularised because of its recognisable green shade which softened the bright bulb, making it much easier to work intensely through the night. This lamp represents the dedication of world famous wartime code breaker and computer pioneer, Dr. Alan Turing; the design of the glowing canopy integrates a scrambled code, inspired by the circuit board patterns and the ground breaking Enigma code.





//Key

On site:

- 1 DoubleTree Hilton
- 2 Starbucks
- 3 Pita Pit
- 4 Black Sheep Coffee
- 5 Anytime Fitness

In the area:

- 6 Leon
- 7 Greggs
- 8 Coop
- 9 Piccadilly Tap
- 10 Archie's Burger Bar
- 11 Cafe Nero
- 12 Malmaison Hotel
- 13 Holiday Inn
- 14 Abode Lounge & Bar

Under development:

- 15 London Rd. Fire Station
(Under redevelopment)
- 16 Kampus
(Due for development)



//London Rd Fire Station



//Kampus



//The Refinery



//On-site Activity

Activated, accessible and available

// ADVANCES IN SCIENCE AND PHYSICS 1932 ART DECO LAMP

This Art Deco lamp takes inspiration from both the beautiful Art Deco buildings which still adorn the city, and the splitting of the first atom in 1932 which was achieved by research conducted by Ernest Rutherford at Manchester University. This huge global advancement for physics is illustrated in the magnified atoms, which can be spotted within the lampshade's expansive abstract formations. Earlier in the 19th century John Dalton's scientific findings of the modern atomic theory revolutionised industry, in which Manchester led the world.



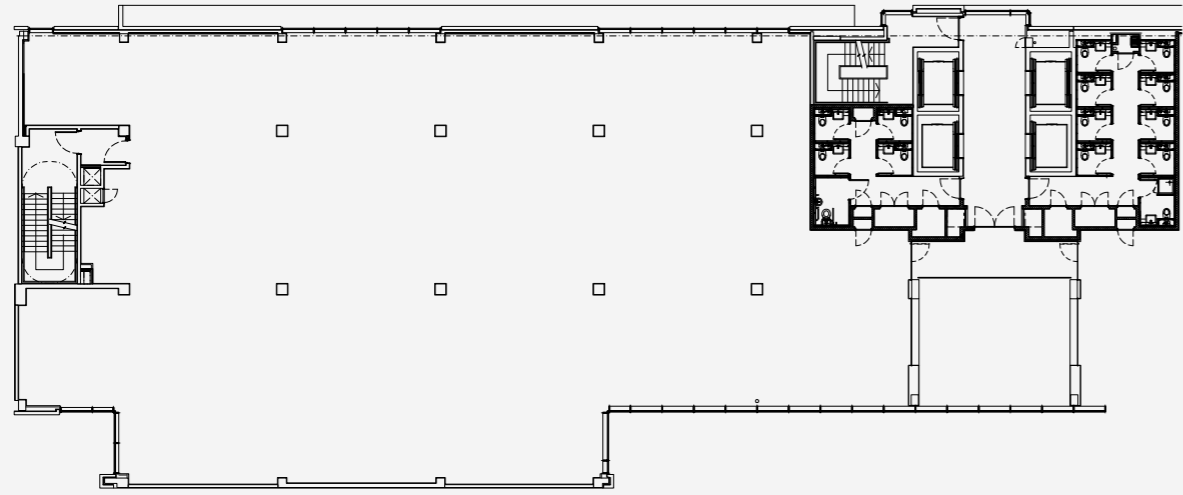


- BREEAM Excellent
- Digital building management system
- New reception finishes
- LED lighting throughout
- Full access raised floor
- 4 pipe fan coil air conditioning system
- Shower facilities on every floor
- Capable of occupation at 1:7 sq m
- 2.7m floor to ceiling height
- High quality finishes throughout
- 4 x 17 person passenger lifts

Professional,
personal and
prestigious



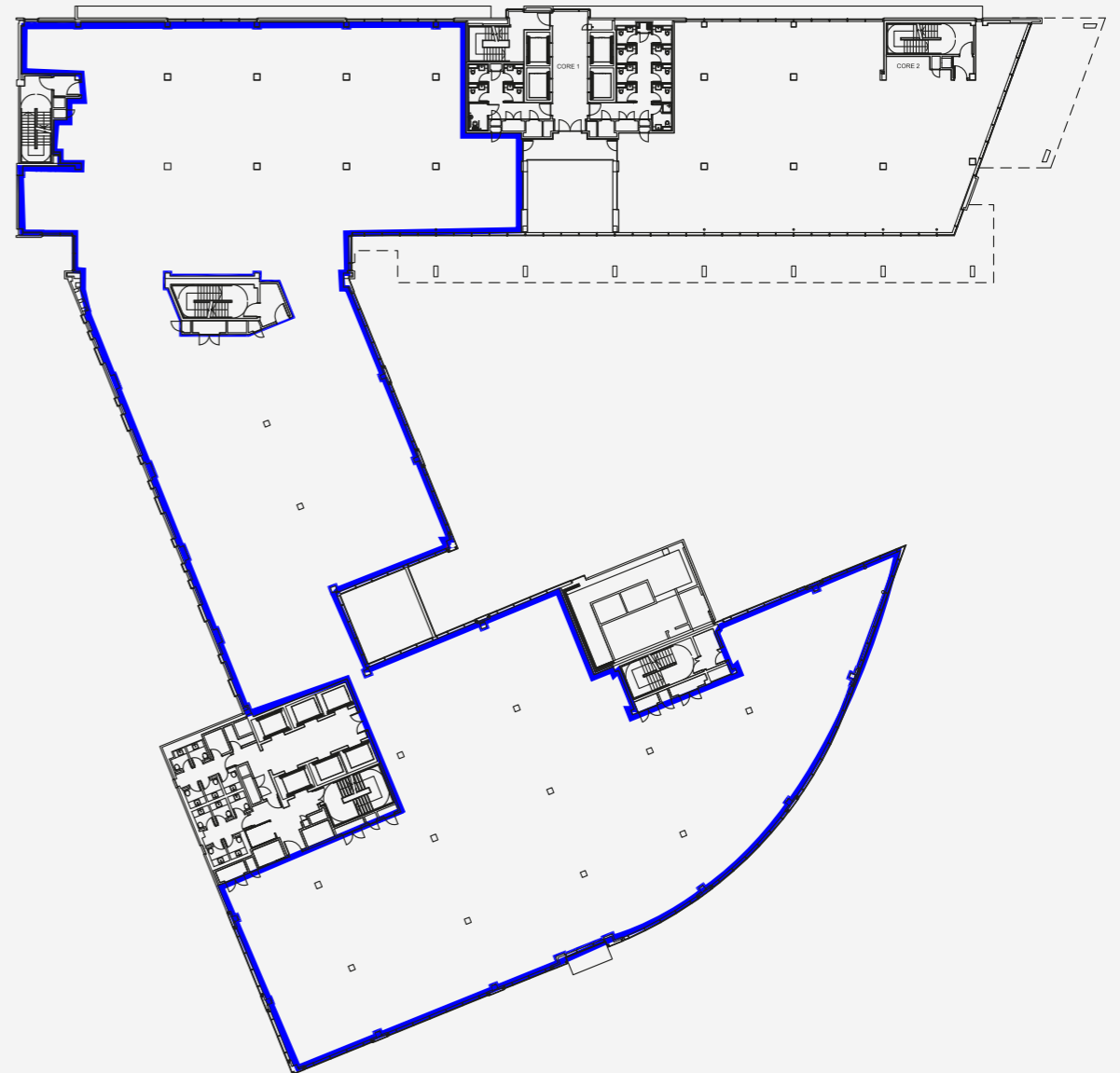
//Unit 1



// Grade A Office space available
in the heart of Piccadilly.

1st Floor 8,068 sq ft.

//Unit 2



// Grade A Office space available
in the heart of Piccadilly.

1st Floor 27,131 sq ft.



PICCADILLY-PLACE.CO.UK

Misrepresentation Act 1967. Unfair Contract Terms Act 1977 The Property Misdescriptions Act 1991. These particulars are issued without any responsibility on the part of the agent and are not to be construed as containing any representation or fact upon which any person is entitled to rely. Neither the agent nor any person in their employ has any authority to make or give any representation or warranty whatsoever in relation to the property. Design by TileCreative.com June 2018



ALLIANCE

Jamie Bottomley

One St Peter's Square
Manchester, M2 3DE

E: jamie.bottomley@cbre.com

T: 0161 233 560

M: 07712 160057



Richard Lace

80 Mosley Street
Manchester, M2 3FX

E: rlace@obiproperty.co.uk

T: 0161 237 1717

M: 07795 104 231

