



# Centurion House

## Concept Design

Rev C 19.06.19



**bruntwood**  
Creating Spaces



Street presence  
Centurion House.

Street presence  
Centurion House.



Verticality

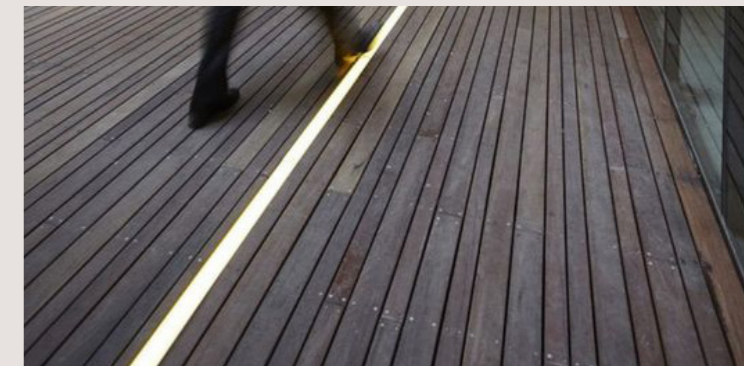


Monumental character



Framing shapes

Inspiration



Light incorporated in pavement



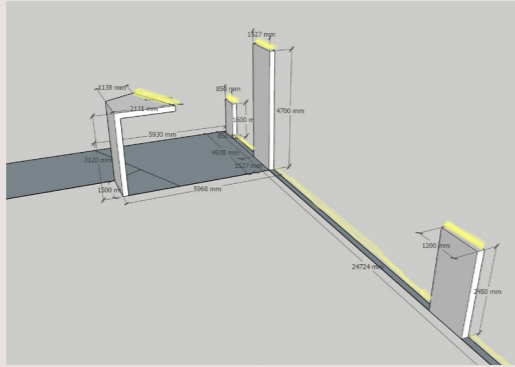
Copper strip to emphasize totem connections



Lighting to top of totems



**bruntwood**  
CreatingSpaces



**Portal entrance**

The portal entrance consisting of 3 totems and open frame portal is the start point of the Bruntwood journey and the access point to our network of spaces. It welcomes the community into Centurion House and creates a natural link between outside and inside.



**Materials to frame the entrance**

The materials and finishes have been carefully considered to reflect the building's heritage and architecture. The bronze totems create a visual link with the bronze statue of Chopin whilst the copper strip visually leads direction to the building as well as sequence of 3 totems.



**Enhance exterior space through landscape**

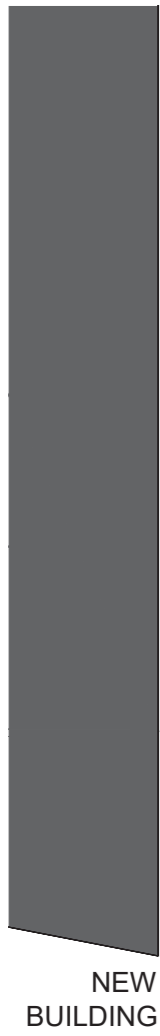
Adding up and down lighting between the top-floor oriel windows will highlight the quality of the building's materials and form. Removing or relocating the bus shelter will open up the views of the main entrance from Deansgate. Adding evergreen ground cover plants below the trees will soften the landscaping.



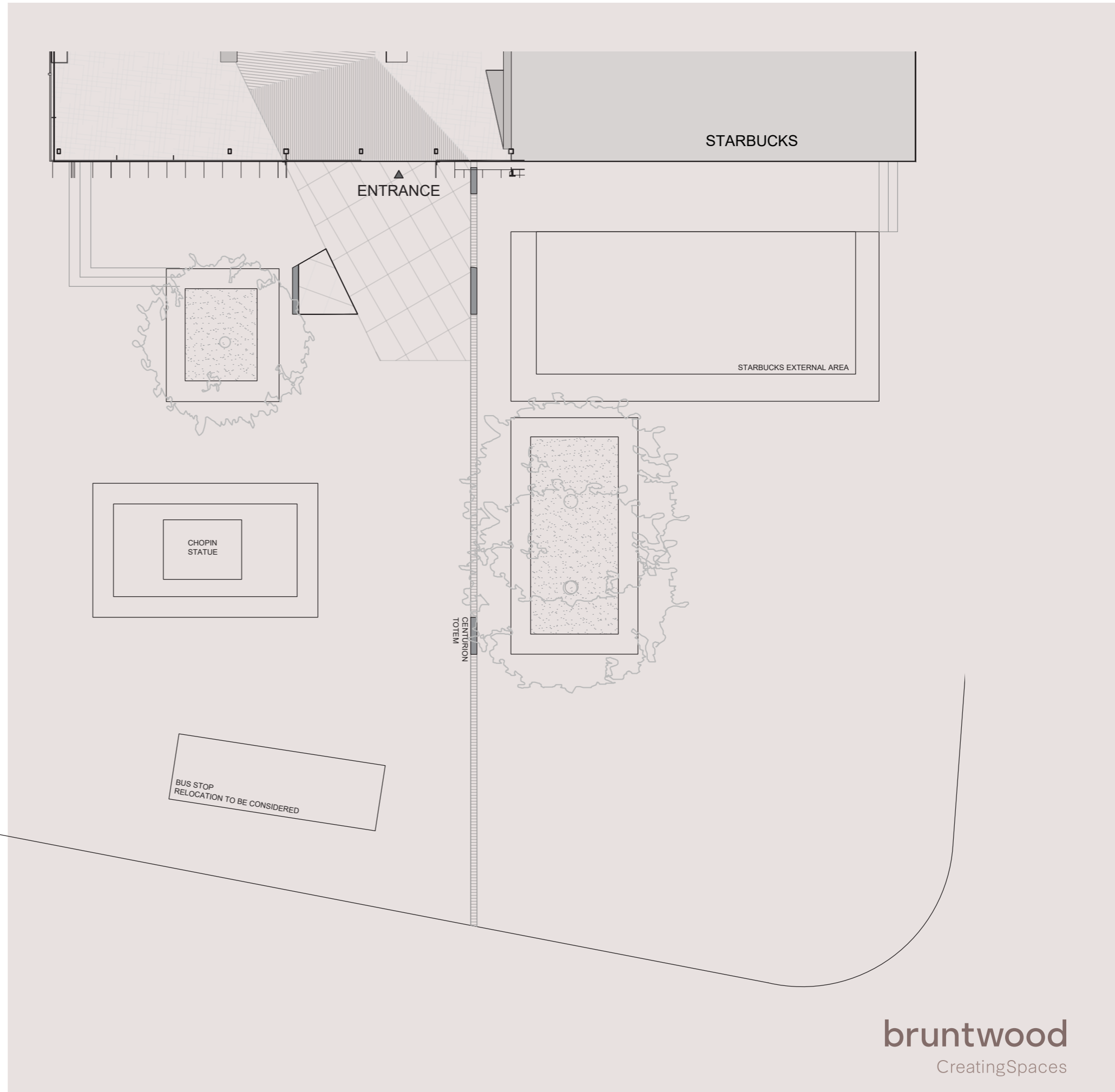
**Master plan and Brazennoze Avenue**

It is recommended to look at the redesign of the whole square in accordance with a new master plan. There will be gain of the area to the left of Centurion building the new square is to be a prestigious entrance to the avenue.

Street presence  
Centurion House.



NEW BRAZENNOSE AVENUE



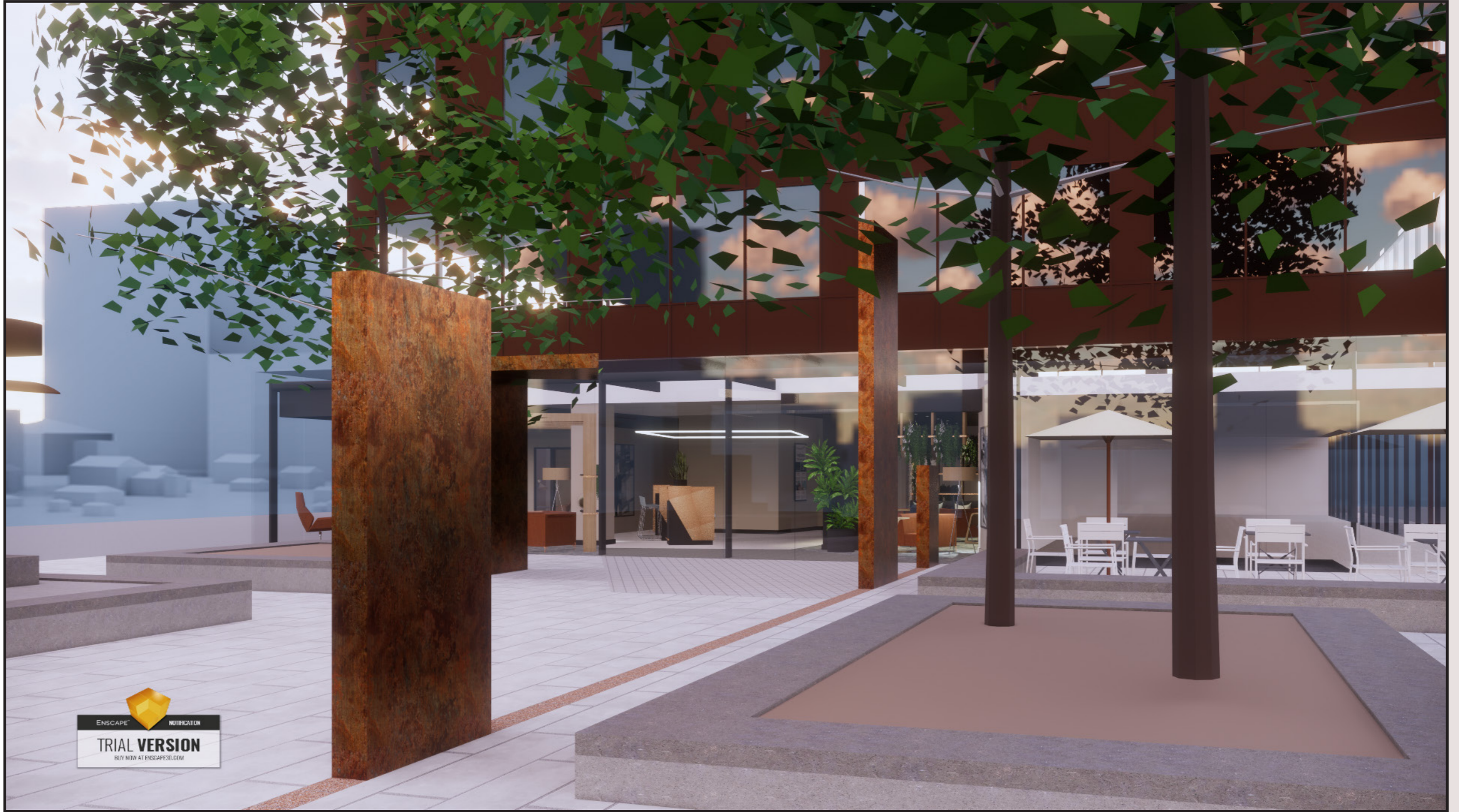
Proposed plan

Street presence  
Centurion House.



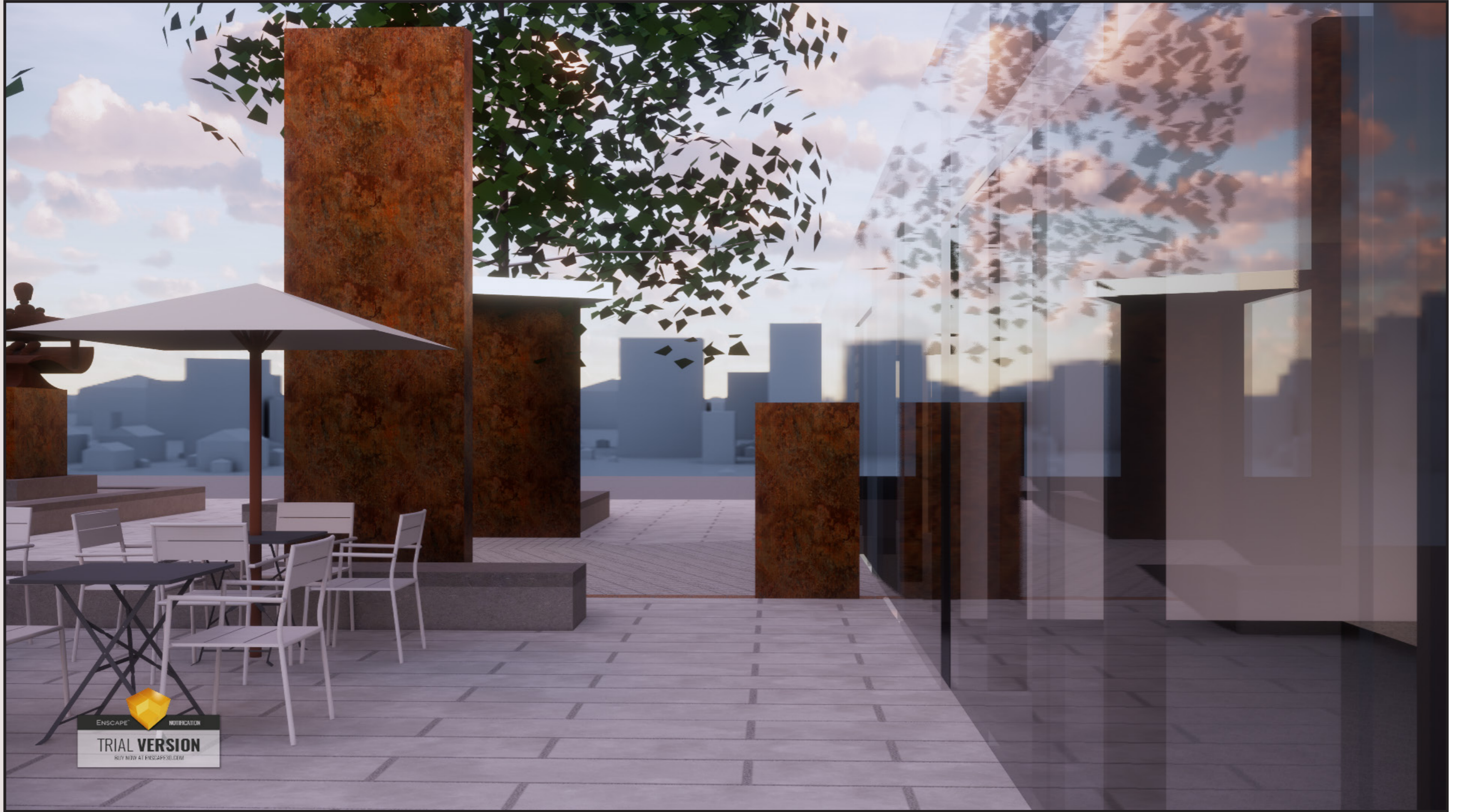
View from Deansgate

Street presence  
Centurion House.



View from Deansgate

Street presence  
Centurion House.



View from Queens St.



**Reception**

The existing reception desk dominates space and does not fit with current design principals.

**Semi-public areas**

A variety of furniture types allows each person to find a setting which suits their needs.

Screens with planting and bric-a-brac suggest each zone without creating physical barriers.

This element of the scheme to be retained and added to with the proposed phase two works.

**Waiting area**

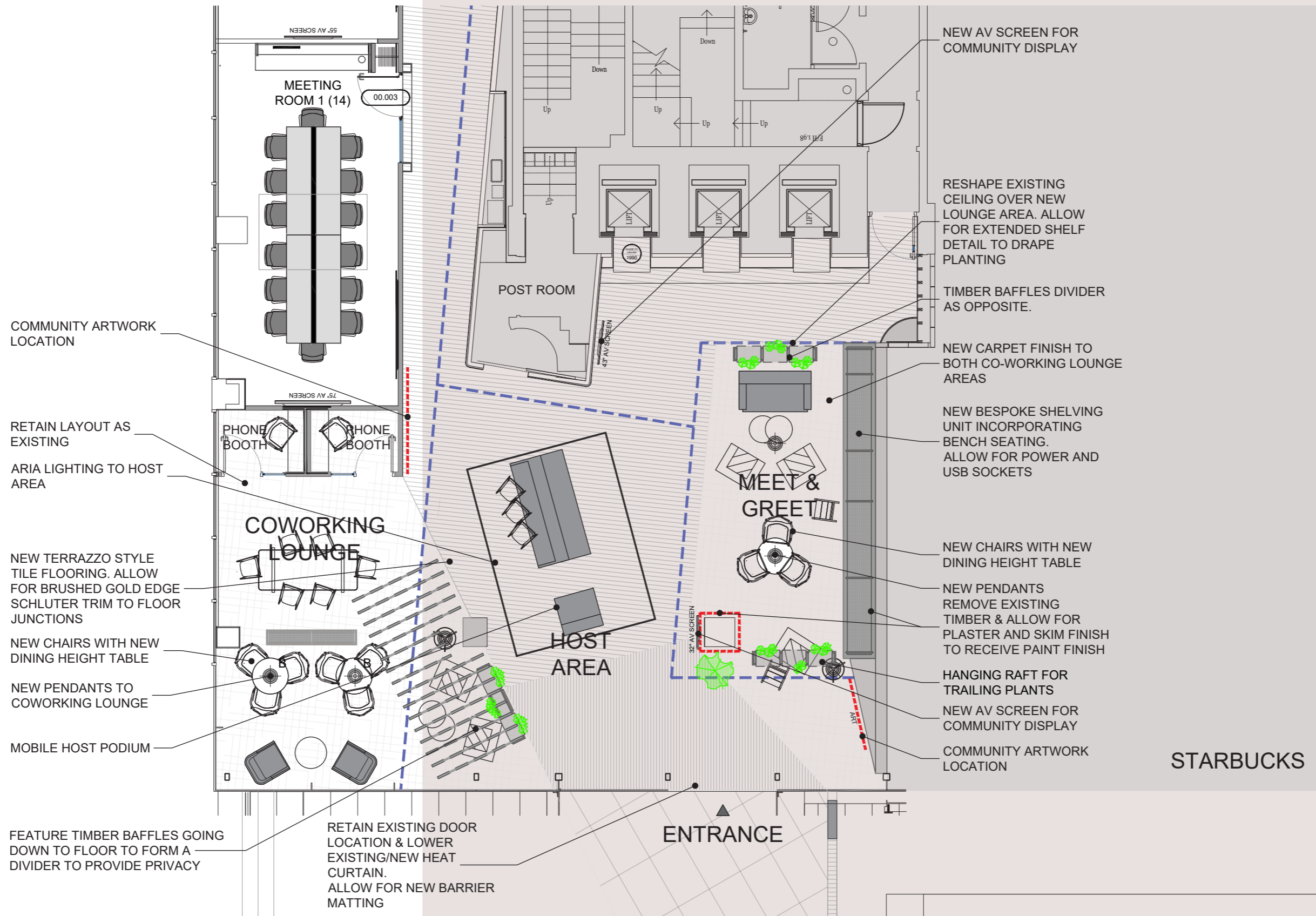
Current area does not fit with design principals and has a corporate "doctors surgery" feel.



**Left:**  
Recently completed fit out

**Right top:**  
Existing reception desk

**Right bottom:**  
Existing waiting area

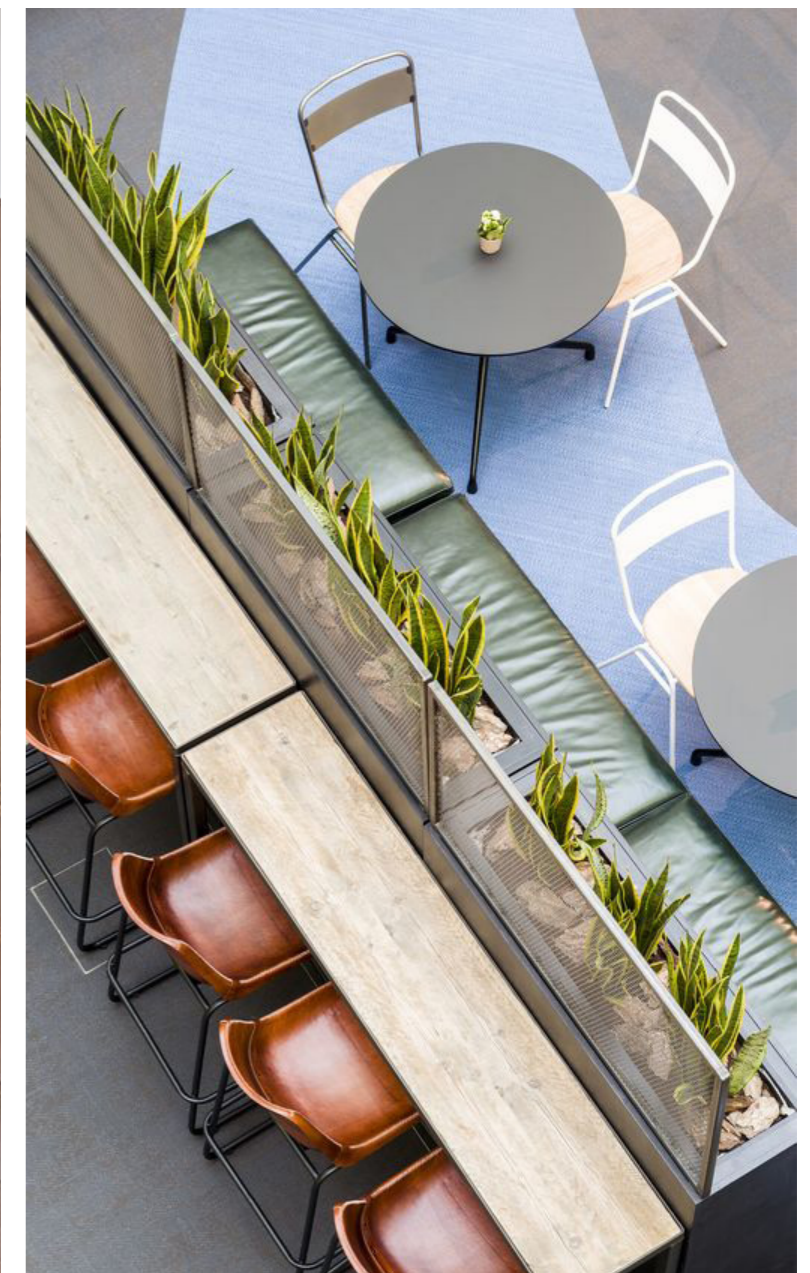


The proposed look & feel is based on the idea of **comfort** and **elegance**.

The materials like timber, leather and terrazzo bring **nature** into the scheme.

An offer of different loose seating provides alternative work settings for **occasional working** and **meetings**.

The proposed **artwork** will enhance the scheme introducing contemporary and elegant pieces.



**Inspiration images**  
Left: 1 Hotel Central Park  
By AvroKO studio

Right: Warner Music UK HQ  
By Woods Bagot

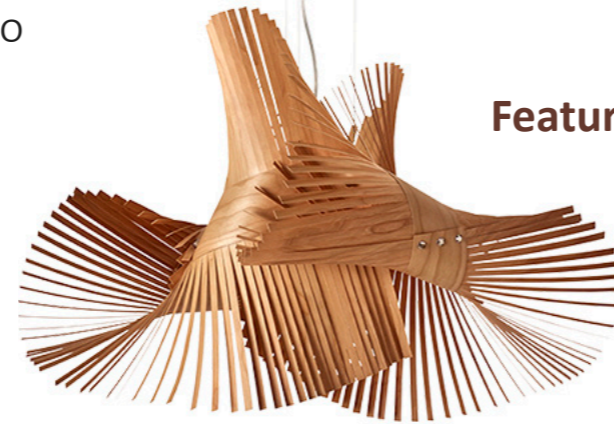
# Proposed finishes & furniture

## Art portal

Featuring local artists and architecture in line with **Lola Donoghue** portfolio



## Feature lighting



**Soft plush fabrics**  
for a high end feel



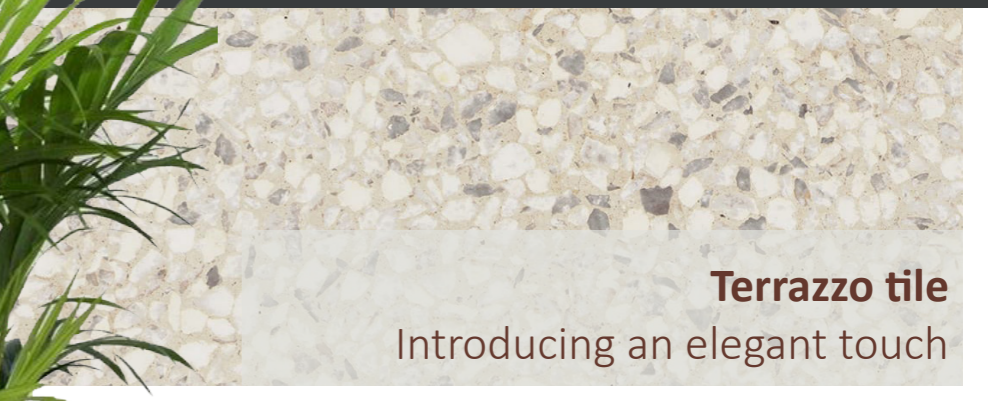
## Wall finishes

Feature wall panelling and complimentary colours matching current scheme



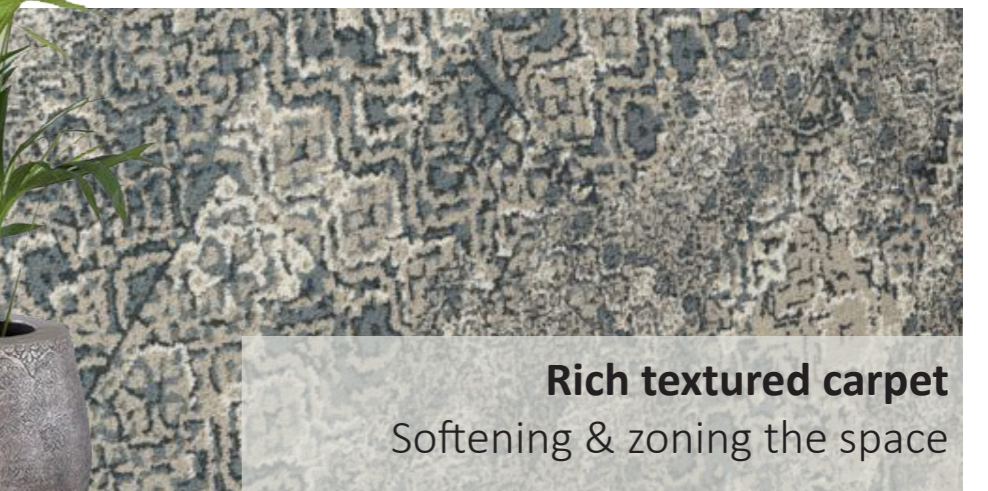
## Terrazzo tile

Introducing an elegant touch



## Rich textured carpet

Softening & zoning the space



## Large scale planting



## Cosy seating in warm tones

Perfect for occasional working & meetings



## High touch down work seating



Welcome & Public zones.  
Centurion House.

# Proposed finishes & furniture

Feature lighting



Timber Joinery



Copper accents



Soft plush fabrics  
for a high end feel



Wall finishes

Feature wall panelling and complimentary colours matching current scheme



Terrazzo tile

Introducing an elegant touch



Rich textured carpet

Softening & zoning the space

comfortable seating

for occasional working & meetings



Welcome & Public zones  
Centurion House.

**bruntwood**

CreatingSpaces

Welcome & Public zones  
Centurion House.



Welcome zone  
[Public]



Welcome & Public zones.  
Centurion House.

**bruntwood**  
CreatingSpaces



Welcome & Public zones  
Centurion House.

ENSCAPE™ NOTIFICATION  
TRIAL VERSION  
BUY NOW AT HESCAPE3D.COM



# Co-working lounge

[Semi public]



Welcome & Public zones  
Centurion House.

ENSCAPE<sup>™</sup> NOTIFICATION  
TRIAL VERSION  
BUY NOW AT [ENSCAPE3D.COM](https://www.enscape3d.com)

Co-working lounge  
[Public]



Welcome & Public zones.  
Centurion House.

bruntwood  
CreatingSpaces