



NORTHSPRING

PETER ST

ANOTHER CLASS OF OFFICE

NORTHSPRING.COM

PETER STREET



NORTHSPRING
PETER STREET

A MANCHESTER CLASSIC

Introduction	04
Lifestyle	05
Building Specification	07
The Park	09
The Club	10
Floor Plans	11
Location	19
Contacts	21



ELEGANCE IS THE ONLY BEAUTY THAT NEVER FADES

Our beautiful workspace is designed to be enjoyed.

Prominently located in the heart of Manchester's traditional business core, Northspring Peter Street is the perfect place for your business.

Designed with the occupier in mind, our spaces include boutique furnishings inspired by the history of the building.

In addition to your own private office, you'll have a wealth of amenities included for you and your employees to use.



A PLACE WHERE ELEGANCE MEETS FUNCTIONALITY

We're not a co-working office, however our communal spaces promote collaboration and community.

Peter Street is a modern building which has been completely reimagined to create a brand new, boutique office offering.

Boasting up to 9 private offices over 7 floors, you have the option to take one or multiple suites to fit the needs of your business.

Our high-spec fixtures and fittings combined with the latest workspace technologies make working from Northspring seamless.

The Club, located on the first floor, is a luxury business lounge featuring zoom booths, communal workspace and hot design as well as a refreshments bar and 12 person meeting room.





High spec fixtures and fittings as well as the very latest workplace technologies complement the stylish interior inspired by the roaring twenties.

7
FLOORS

9
EXCLUSIVE
WORKSPACES

SUITES FROM
1,300 Sq Ft

THERE IS BEAUTY IN EVERYTHING

BUILDING SPECIFICATION

Every detail matters and we have considered them all

With a concierge style front-desk, plug and play connectivity, breakout space, cycle hub and high-spec fitness suite, Northspring provides a full range of high-quality amenities. This sits alongside initiatives that will help you become a part of this exciting community.



LED Strip Lighting



Gym/Fitness Suite



Plug & Play Connectivity



Shower Facilities & Lockers



Secure Access



Cycle Storage



2 x Passenger Lifts



Furniture Package



24/7 Access



Manned Reception



Hot Desking



Meeting Room Facilities



Roof Terrace



Secure Basement Parking



2 E-parking bays





WORK LIFE BALANCED

The average person spends over 90,000 hours of their life at work. We want to help make those hours enjoyable.

Recent studies have shown that unhealthy work environments can lead to burnout and employees suffering with stress. With this in mind, wellness is an integral part of the Northspring model.

Occupiers will have free access to the on-site fitness studio at Peter Street, which boasts state-of-the-art gym equipment and can be booked through the concierge at your ease. The secure cycle storage, lockers, showers, and changing rooms ensure the transition from workout to work is smooth, and provides your staff with everything they need within the building to lead a balance lifestyle.

Amenities at neighbouring Northspring offices can also be utilised by occupiers. The nearby Spring Gardens boasts a second gym and an impressive private roof terrace; why not head over for a change of scenery or up to the roof for some fresh air with fantastic views of Manchester.



THE PARK

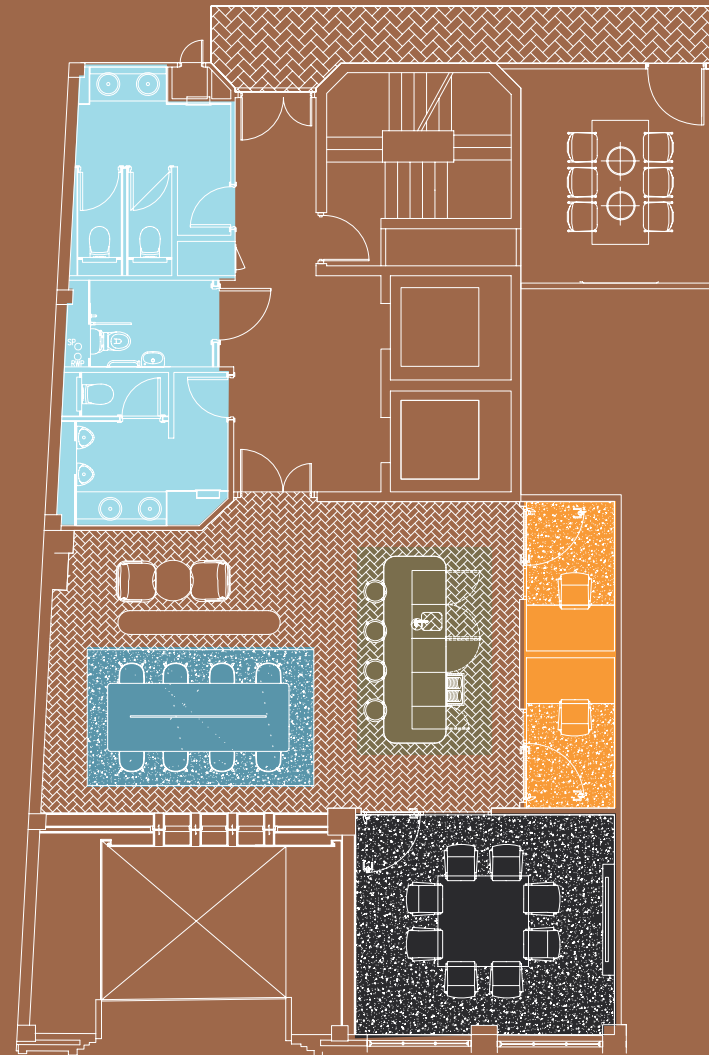
SPACE	KEY
Gym	●
Changing Rooms & Showers	●
Drying Room	●
Cycle Store	●
Car Park	●



PETER STREET

THE CLUB

SPACE	KEY
Meeting Rooms	●
Kitchenette	●
Zoom Booths	●
Breakout Space	●
Toilets	●



PETER STREET

GROUND FLOOR

SPACE	SQ M	SQ FT
A	LET	LET

- Short Stay Lounge Seating ●
- Stairwell ●
- Concierge ●

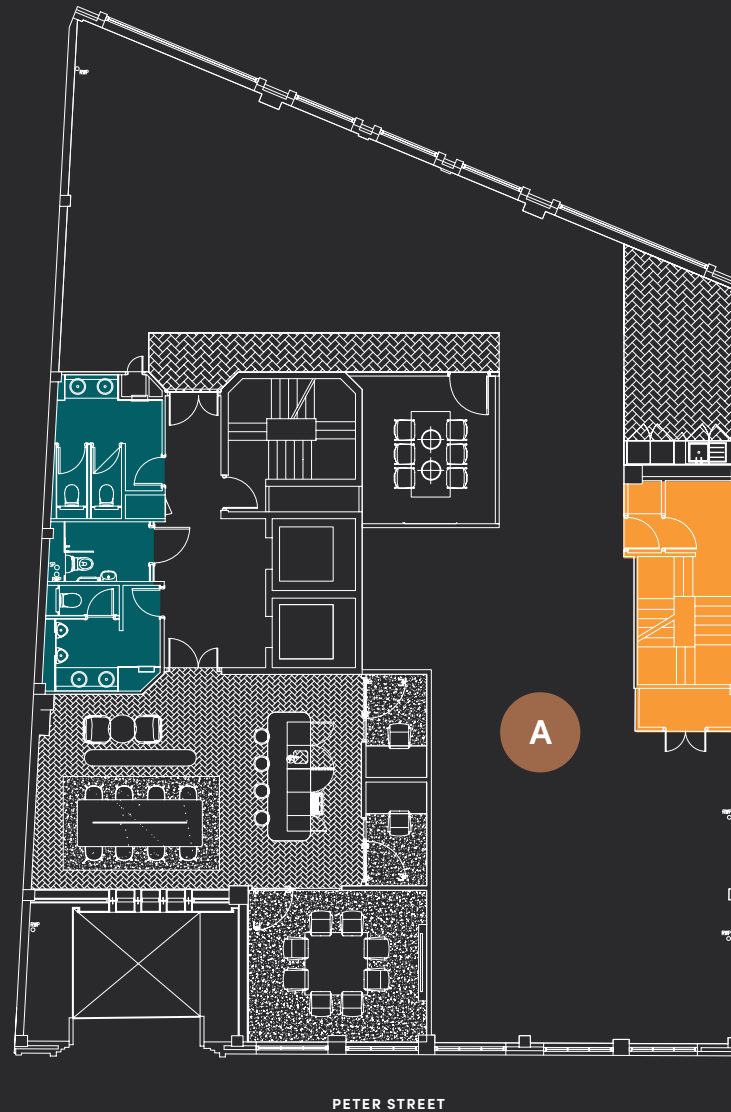


All measurements are subject to change.

FLOOR ONE

OFFICE SPACE	SQ M	SQ FT
A	297	3,200



- Stairwell ●
- Toilets ●

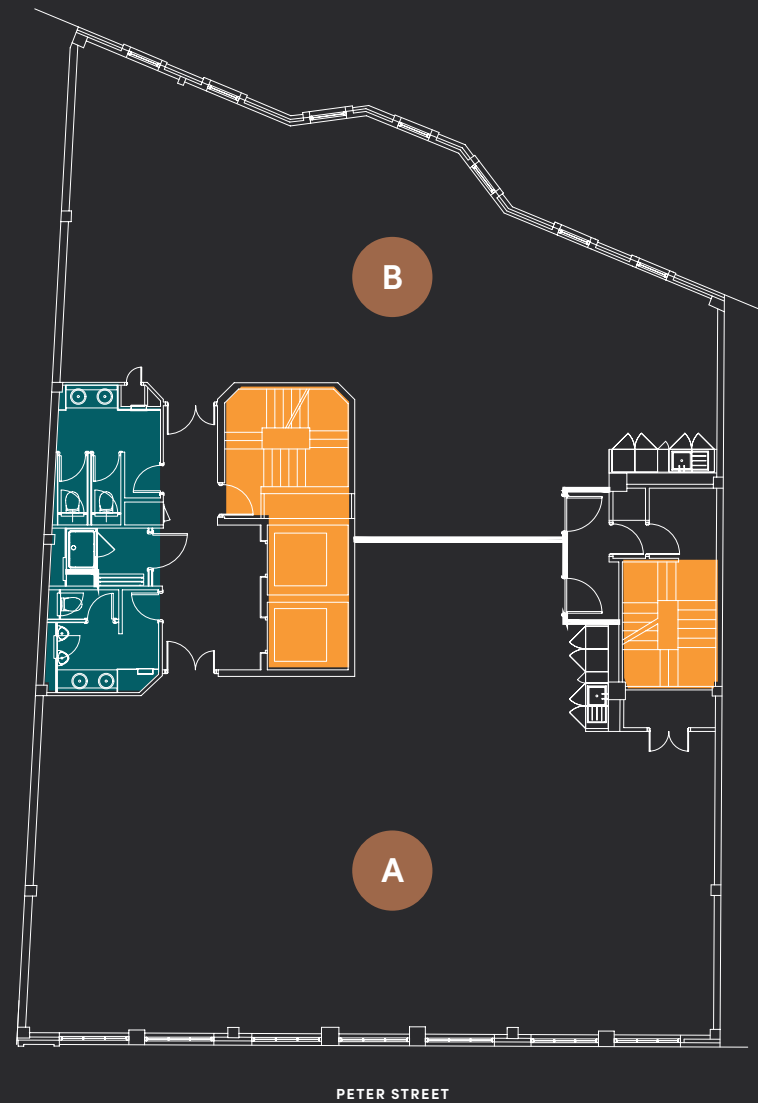


Indicative split. Whole floor plates available.
All measurements are subject to change.

FLOOR TWO

OFFICE SPACE	SQ M	SQ FT
A	186	2,000
B	135	1,450

Stairwell	
Toilets	



Indicative split. Whole floor plates available.
All measurements are subject to change.

FLOOR THREE

OFFICE SPACE	SQ M	SQ FT
A	LET	LET

- Stairwell ●

- Toilets ●

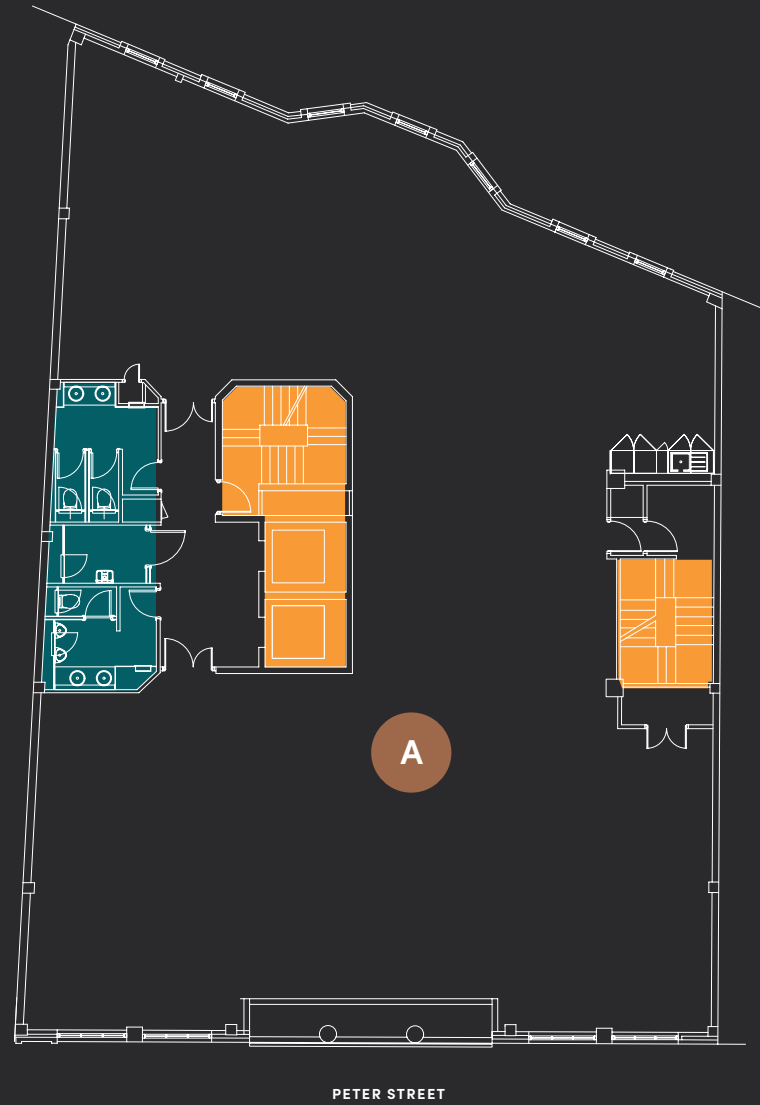


PETER STREET

FLOOR FOUR

OFFICE SPACE	SQ M	SQ FT
A	320	3,445

- Stairwell ●
- Toilets ●



All measurements are subject to change.

FLOOR FIVE

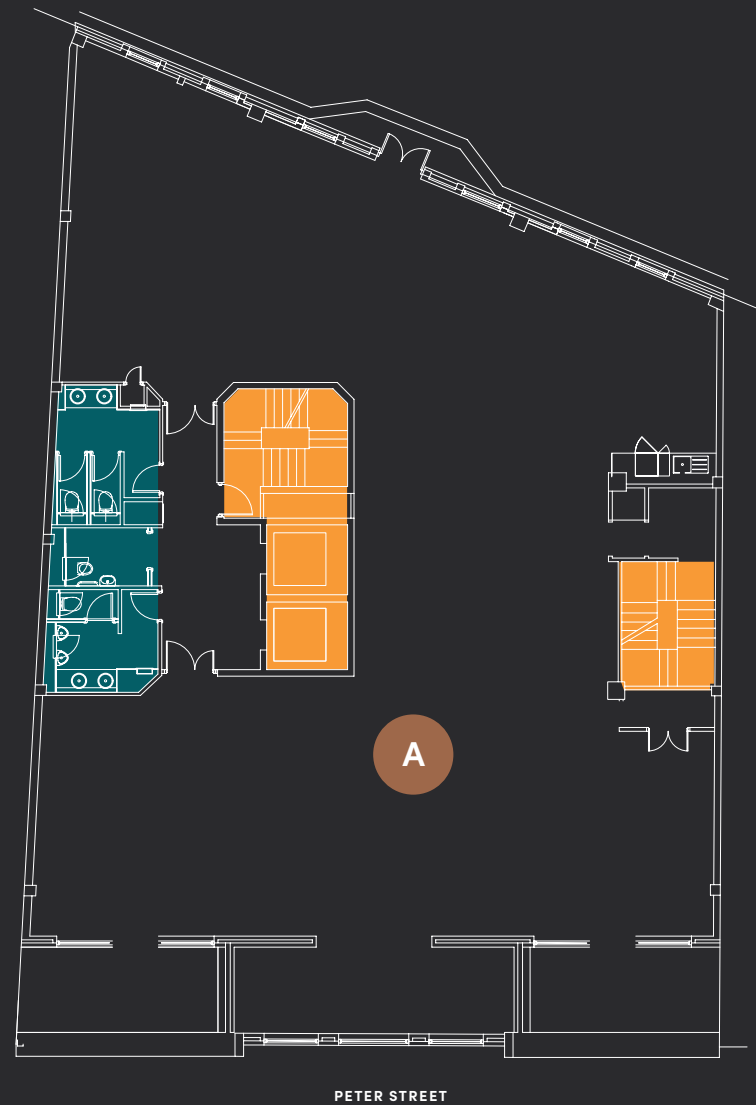
OFFICE SPACE	SQ M	SQ FT
A	336	3,615

Three roof terraces with views of the city

Stairwell



Toilets

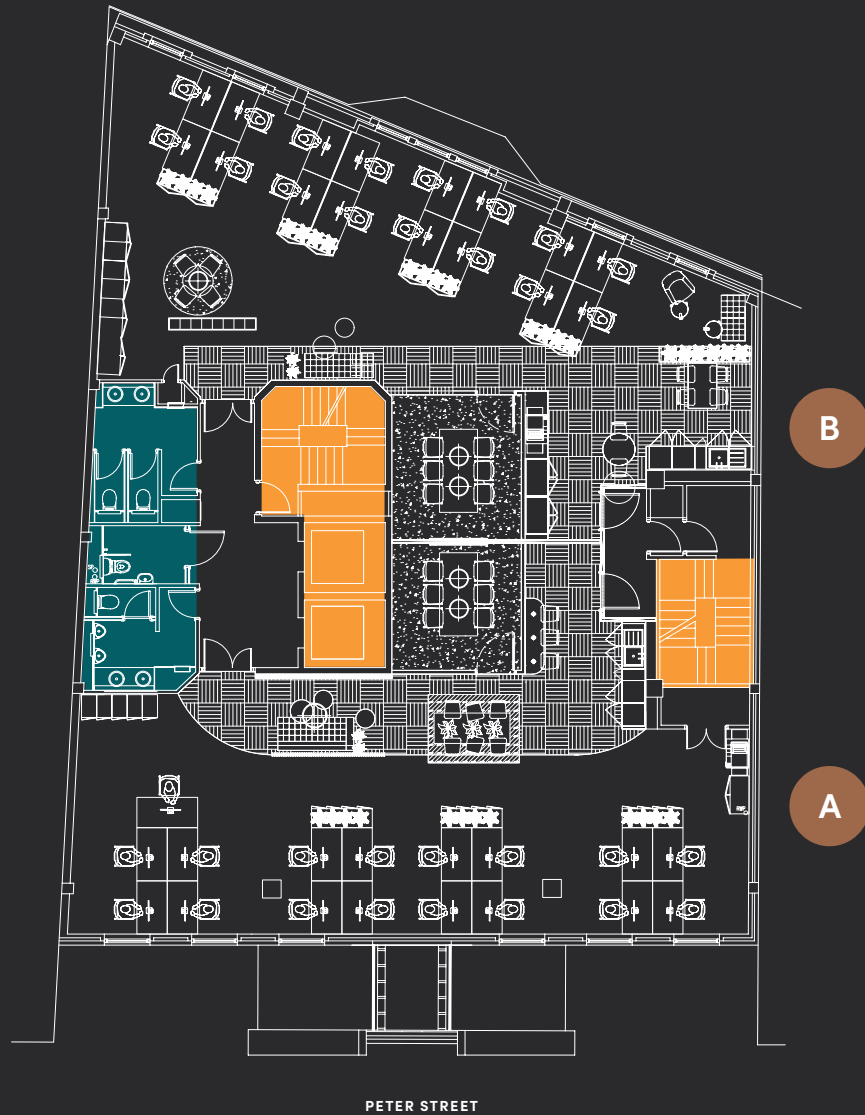


FLOOR SIX

OFFICE SPACE	SQ M	SQ FT
A	139	1,500
B	121	1,300

This floor comes fully fitted out with high-grade furnishings

- Stairwell ●
- Toilets ●



Indicative split. Whole floor plates available.
All measurements are subject to change.

FLOOR SEVEN

OFFICE SPACE	SQ M	SQ FT
A	266	2,860



- Stairwell ●
- Toilets ●



PERFECTLY POSITIONED

Peter St, Manchester M2 5GP

Northspring is perfectly located to give you access to all Manchester city centre has to offer. Northspring couldn't be better positioned for transport links, with the city's main bus, Metrolink and train stations all within 10 minutes on foot, it is simple to travel to all major connections across the country.

Manchester's business, shopping and leisure districts such as Spinningfields, Chinatown and the Northern Quarter are minutes away.

1. La Bandera
2. Piccolinos
3. Society
4. The Bridgewater Hall
5. The Ivy Spinningfields
6. 20 Stories
7. The Blues Kitchen
8. Hawksmoor
9. Gusto
10. The Alchemist
11. Cibo
12. Albert's Schloss
13. Haunt MCR
14. Rudy's
15. Almost Famous
16. Ezra and Gil
17. Manchester Central

ON FOOT

Piccadilly Station	10 min
Victoria Station	10 min
Northern Quarter	8 min
Spinningfields	7 min
Deansgate	6 min
Market Street	4 min

METROLINK

Manchester Airport	40 min
East Didsbury	30 min
Ashton-under-Lyne	30 min
Bury	25 min
Media City	20 min
Altrincham	20 min

RAIL

London	2 hours
Edinburgh	3.5 hours
Birmingham	1.5 hours
Newcastle	1.5 hours
Leeds	1 hour
Liverpool	1 hour

WORK AT NORTHSPRING NATIONALLY

When you become part of the Northspring family, you get access to luxury amenities across all Northspring properties.





NORTHSPRING

PETER ST

CBRE

Sixteen.

Neil Mort

neil.mort@cbre.com
07584 394737

Amelia Barratt

amelia@sixteenrealestate.com
07715 576 975

Jonathan Cook

jonathan.cook@cbre.com
07702 976062

Scott Shufflebottom

scott@sixteenrealestate.com
0771 5683 369

PETER ST
MANCHESTER
M2 5GP



NORTHSPRING.COM