



# TRANSMISSION

ENTERPRISE CITY®

**AN ICONIC  
BUILDING...**



**...A BOLD NEW  
STATEMENT**

**A true Manchester  
landmark brimming with  
history and heritage.**

— EST 1954 —

**GRANADA**

Original Granada TV HQ building, image  
©ITV Granada.





# *TRANSMISSION*



TRANSMISSION

**A MEDIA ICON  
REINVENTED  
FOR MODERN  
INDUSTRY**



Exterior CG view of the Transmission Building.



**BUILT ON HISTORY...**

**...TO DEFINE A NEW FUTURE**



# ***TRANSMISSION***

Creative spaces for modern working, spaces for modern socialising. Places of collaboration and innovation, from flexible floors to start-up studios, imagine a place that challenges your perceptions of the workplace.

**This is 'Transmission'**

# WORKSPACE DESIGN

Transmission is part of the Old Granada Studios complex and is a historic piece of architecture. The legacy of filming at the studios will be continued and Transmission provides a new innovative way of working.

Innovative double-height workspace galleries designed as ultra-flexible interconnected studios to create light and airy environments. Inspired by sci-fi cinema, technology and the environment to create a space that is clean, fresh and innovative.

# DESIGN



# B I O P H I L I C

## IMPROVING HEALTH, WELLBEING, PRODUCTIVITY & CREATIVITY

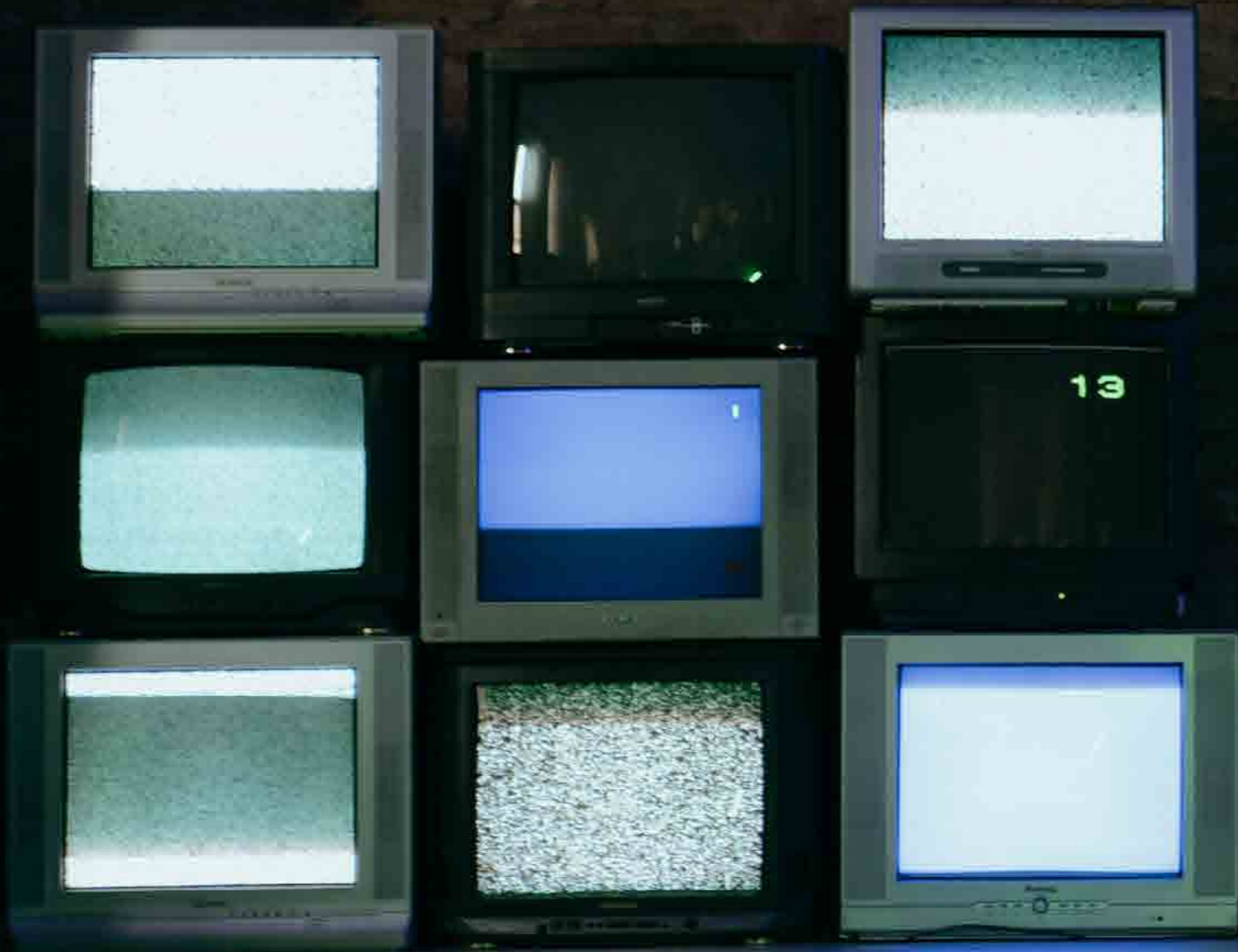
Transmission is aesthetically designed for people and comfort, it's taken the human centred approach to improving health and wellbeing in the workplace.

By designing the building with strong biophilic principles Transmission is the perfect environment for work and collaboration. With spacious and airy facilities the building contributes to a healthy environment that can reduce stress, improve productivity and creativity, it can also aide clarity of thought. Even small biophilic adjustments to the workplace have been shown to help the overall wellbeing of staff.



# SUSTAINABLE DESIGN & BUILD

# A NEW PLACE FOR:

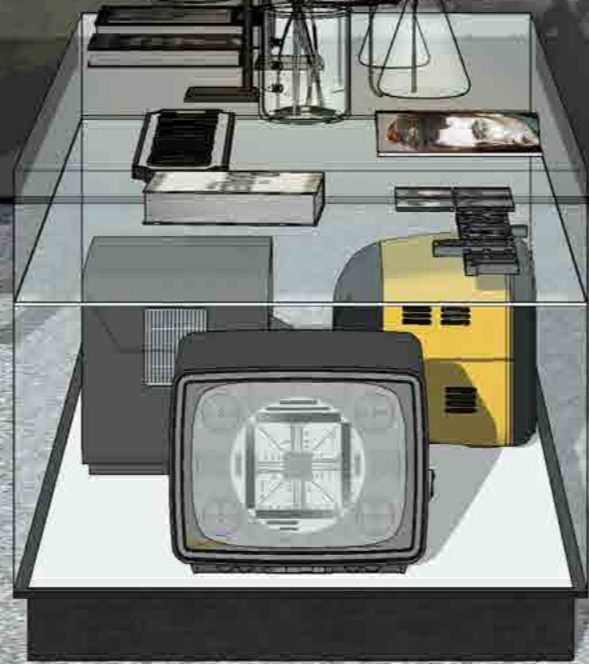


- .WORKING
- .COLLABORATING
- .CONNECTING
- .CREATING
- .DISCOVERING
- .INNOVATING

TRANSMITTING.....



CG view of the lobby at the Transmission Building.





Workspace look & feel.

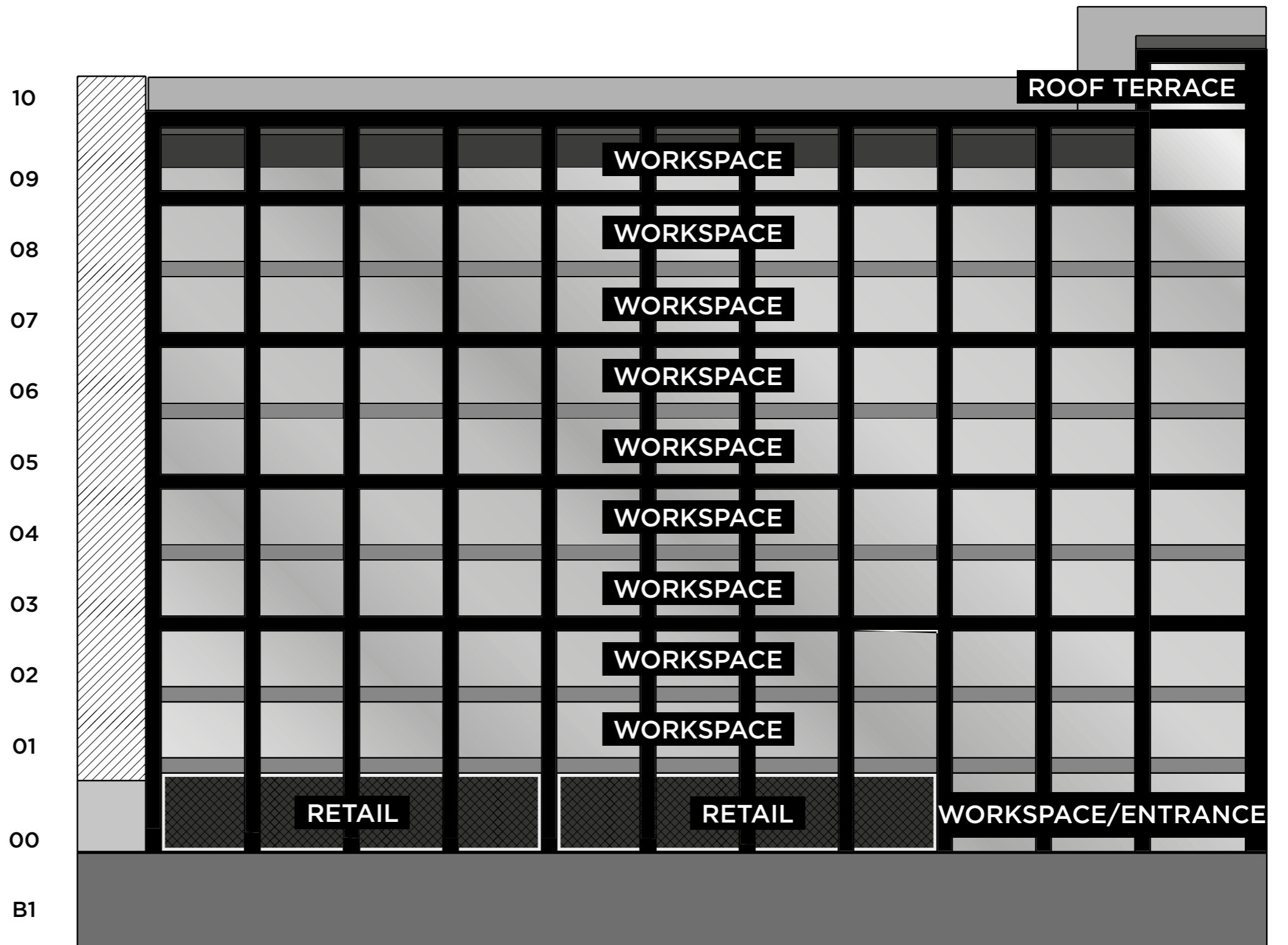


Visual concept of typical workspace entrance.

Visual concept of typical workspace.



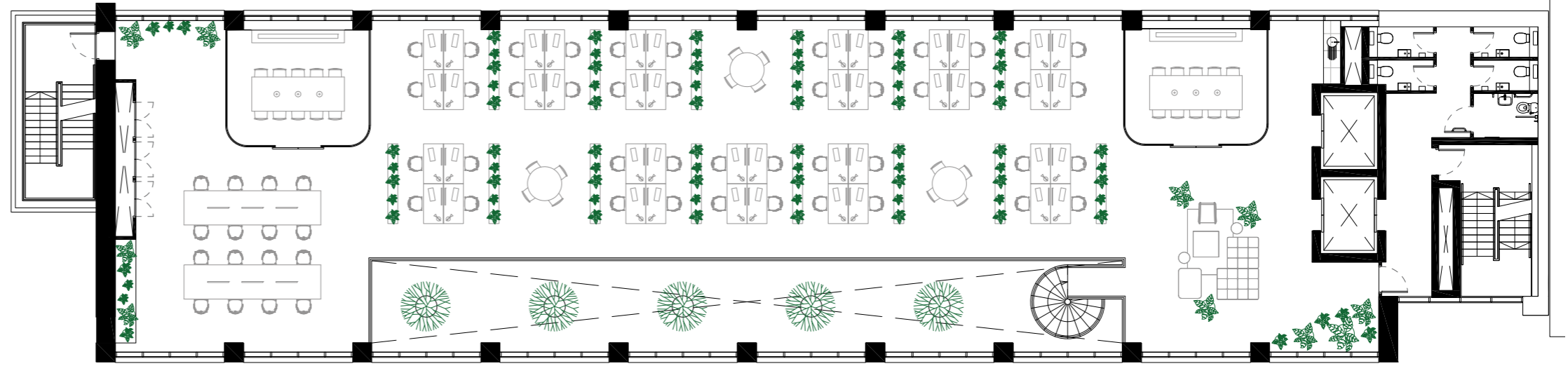
# FLOOR STACKER



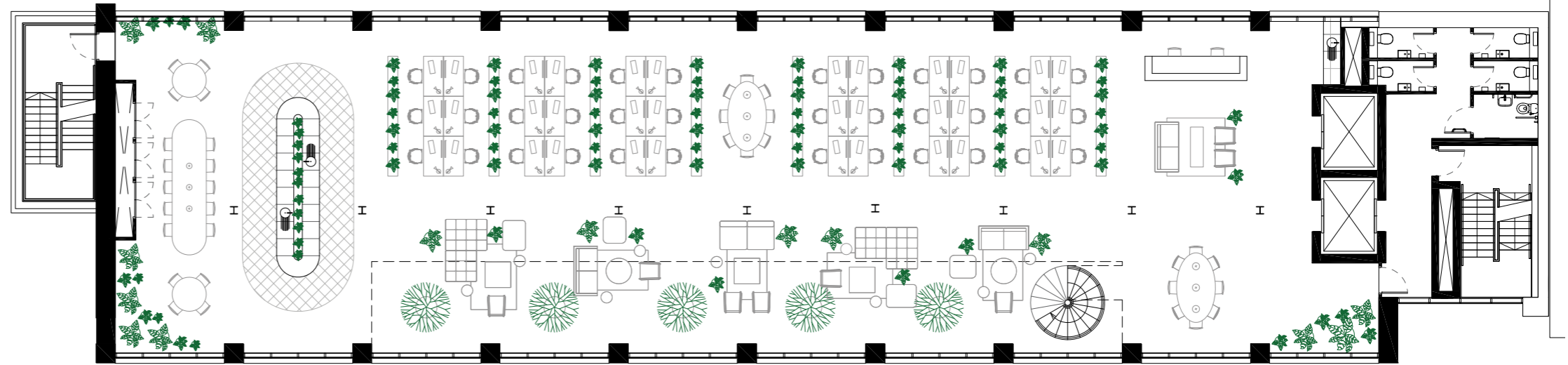


# AREAS SCHEDULE

LEVEL	USE	NIA (SQ M)	NIA (SQ FT)
BASEMENT	RETAIL SPACES A & B	A: 192   B: 139	A: 2,060   B: 1,500
GROUND	RETAIL SPACES A & B	A: 157   B: 120	A: 1,690   B: 1,290
LEVEL ONE	WORKSPACE	499	5,370
LEVEL TWO	WORKSPACE	499	5,370
LEVEL THREE	WORKSPACE	482	5,180
LEVEL FOUR	WORKSPACE	493	5,300
LEVEL FIVE	WORKSPACE	493	5,300
LEVEL SIX	WORKSPACE	493	5,300
LEVEL SEVEN	WORKSPACE	493	5,300
LEVEL EIGHT	WORKSPACE	493	5,300
LEVEL NINE	WORKSPACE	416	4,470
LEVEL TEN	TERRACE / AMENITY	n/a	n/a



TYPICAL UPPER GALLERY LEVEL



TYPICAL LOWER GALLERY LEVEL

# A NEW WORKSPACE APPROACH IN THE CITY'S FASTEST GROWING DISTRICT



*TRANSMISSION*

# ENTERPRISE CITY

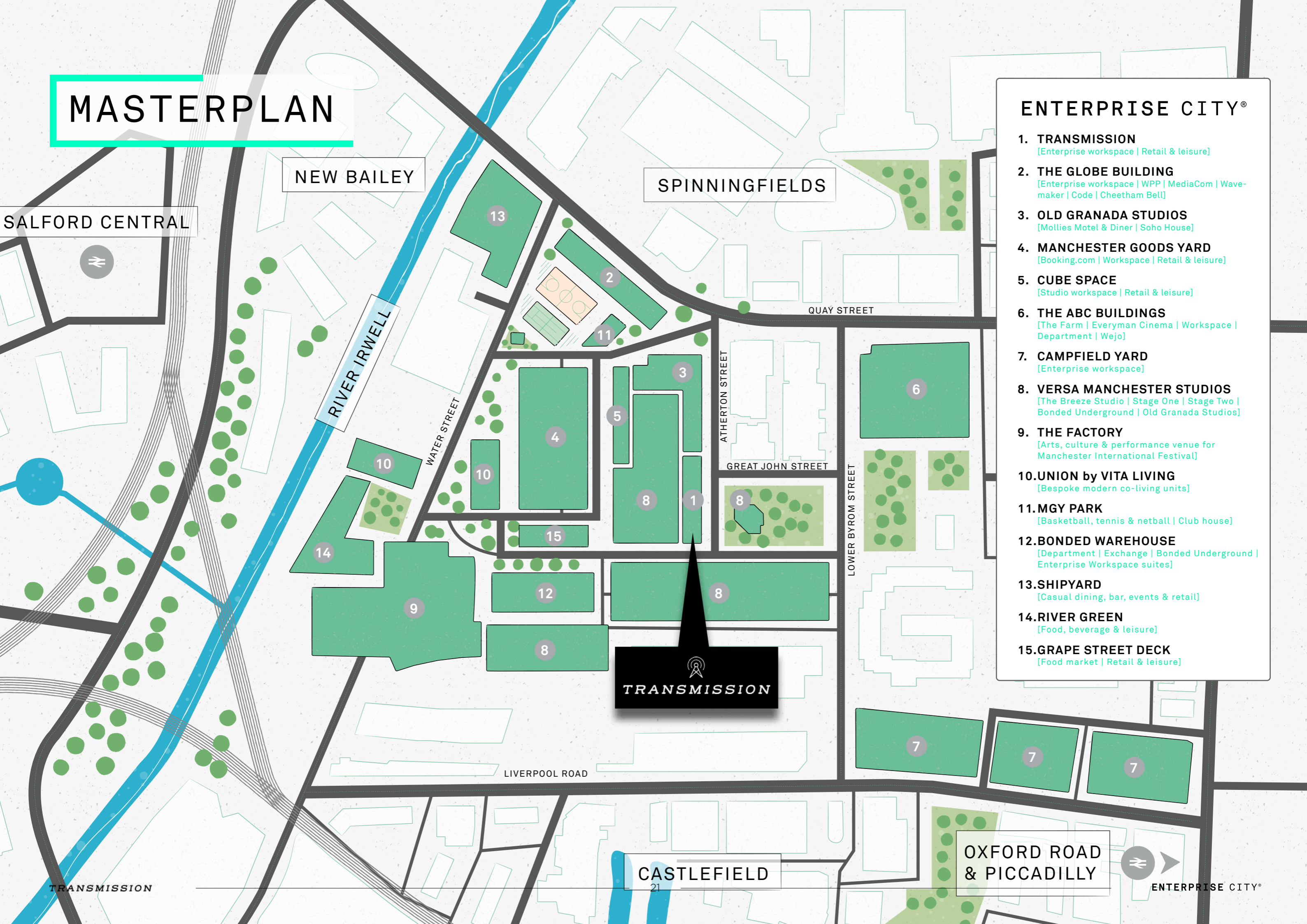
# ENTERPRISE CITY®

THE FUTURE OF MODERN INDUSTRY: A MEDIA, TECH & CREATIVE CLUSTER

Transmission forms a key part of Enterprise City - an inspirational new district of the city, with exceptional workspaces, inspiring cultural spaces, and bespoke city centre living. It's a media, tech and creative cluster designed to connect people and businesses, encourage collaboration, and create success through expert place-making.



# MASTERPLAN



## ENTERPRISE CITY®

- 1. TRANSMISSION**  
[Enterprise workspace | Retail & leisure]
- 2. THE GLOBE BUILDING**  
[Enterprise workspace | WPP | MediaCom | Wave-maker | Code | Cheetham Bell]
- 3. OLD GRANADA STUDIOS**  
[Mollies Motel & Diner | Soho House]
- 4. MANCHESTER GOODS YARD**  
[Booking.com | Workspace | Retail & leisure]
- 5. CUBE SPACE**  
[Studio workspace | Retail & leisure]
- 6. THE ABC BUILDINGS**  
[The Farm | Everyman Cinema | Workspace | Department | Wejo]
- 7. CAMPFIELD YARD**  
[Enterprise workspace]
- 8. VERSA MANCHESTER STUDIOS**  
[The Breeze Studio | Stage One | Stage Two | Bonded Underground | Old Granada Studios]
- 9. THE FACTORY**  
[Arts, culture & performance venue for Manchester International Festival]
- 10. UNION by VITA LIVING**  
[Bespoke modern co-living units]
- 11. MGY PARK**  
[Basketball, tennis & netball | Club house]
- 12. BONDED WAREHOUSE**  
[Department | Exchange | Bonded Underground | Enterprise Workspace suites]
- 13. SHIPYARD**  
[Casual dining, bar, events & retail]
- 14. RIVER GREEN**  
[Food, beverage & leisure]
- 15. GRAPE STREET DECK**  
[Food market | Retail & leisure]

  
**TRANSMISSION**

# BUILDING PART OF A CITY'S FUTURE

**ENTERPRISE CITY IS AN INSPIRATIONAL NEW DISTRICT OF THE CITY, WITH EXCEPTIONAL WORKSPACES, INSPIRING CULTURAL SPACES, AND BESPOKE CITY CENTRE LIVING.**

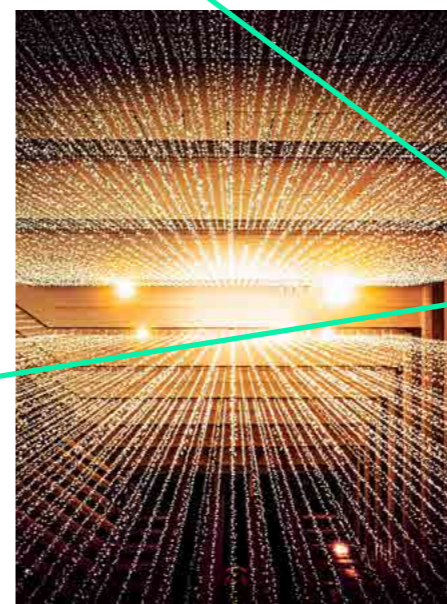
It's a media, tech and creative cluster designed to connect people and businesses, encourage collaboration, and create success through expert place-making.

Enterprise City provides a series of tech-driven and creative buildings where modern industry can flourish by focusing on digital skills, exemplary talent, new technologies and global communication.

Since its inception, Enterprise City has become an international brand and a renowned place for innovators, creators and makers; trailblazers, pioneers and leaders. It's already home to a range of organisations from world leading technology companies to highly successful creative start-ups and media production studios.

**DESIGNED TO BE THE COMPLETE NEIGHBOURHOOD, A PLACE TO LIVE, WORK AND SOCIALISE.**

TRANSMISSION



"...a truly inspiring and rewarding place to locate your business, it will be a place to breed talent and thereby release growth opportunities."

Michael Ingall - Chief Executive, Allied London and founder of Enterprise City



  
**TRANSMISSION**

# Manchester

# SUPER CONNECTED

**ENTERPRISE CITY IS WELL SERVED BY PUBLIC TRANSPORT - TRAIN VIA THE NEW ORDSALL CHORD TO PICCADILLY AND VICTORIA STATIONS, METRO TO DEANSGATE, FREE METROLINK TO BOTH MAINLINE STATIONS.**

Full provision for electric car parking and cycling is made within the Enterprise City masterplan. The car parking strategy for occupiers has been driven by a strategy that envisages that over the first few years car parking demand will reduce as alternative forms of transport emerge by the carbon reduction agenda.

**Train**  
There are five railway stations all within easy walking distance of Enterprise City.

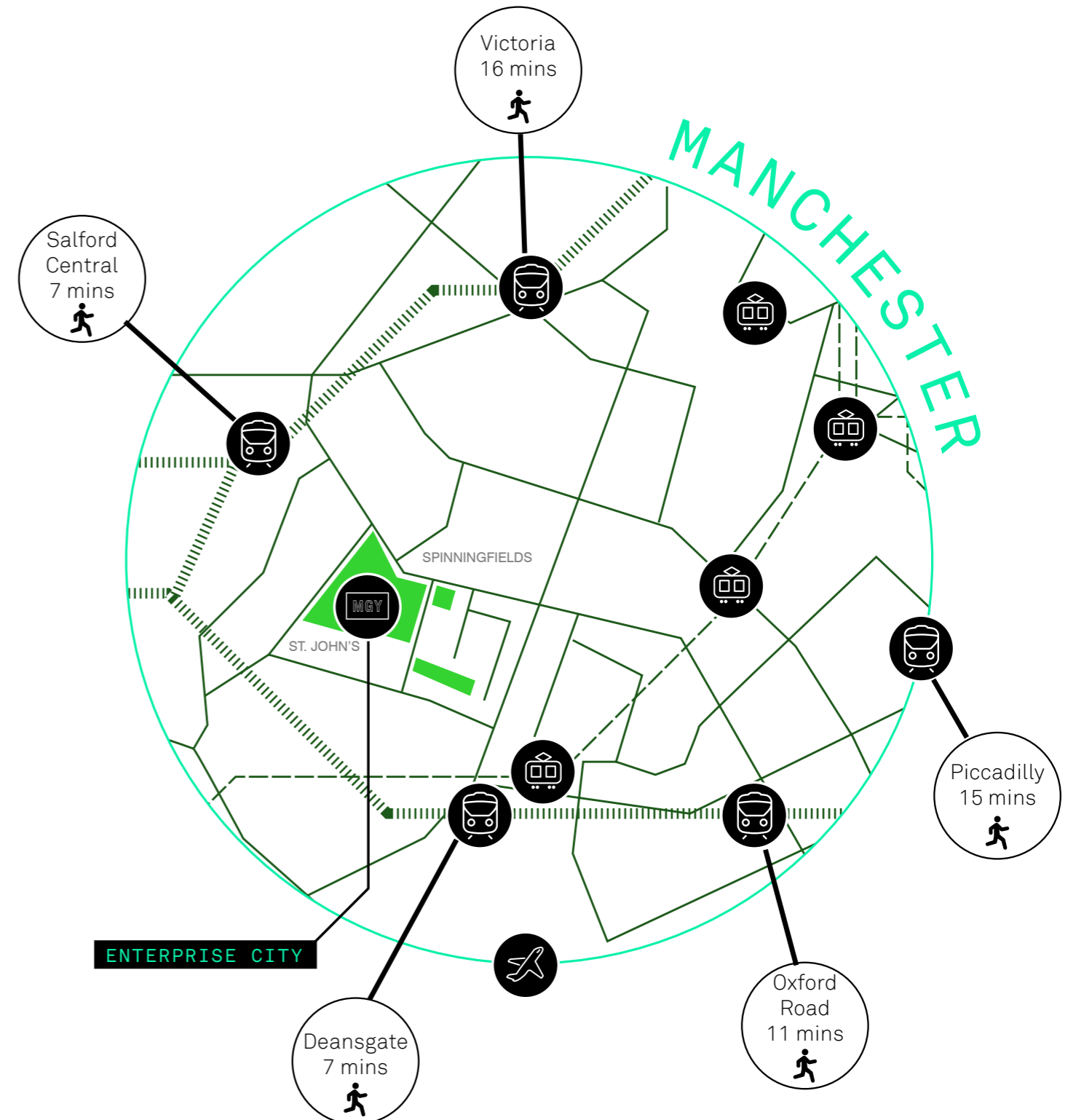
**Bus**  
The Manchester 'free bus' service has two city-wide routes serving Enterprise City. All services run every 10-12 minutes, Mon-Sun.

**Metrolink**  
Metrolink trams run throughout Greater Manchester with three stops within walking distance of Enterprise City.

**Car**  
A 24-hour NCP car park is located directly opposite St. John's Place, and three additional car parks are within five minutes' walk of Enterprise City.

**Air**  
Manchester International Airport is only a short distance from the Goods Yard at Enterprise City and easily accessible by car or train: driving: 23mins or by train: 25mins.

## WALKING TO ENTERPRISE CITY





# CONTACT

---

LONDON  
7-8 Savile Row  
Mayfair  
London  
W1S 3PE  
T: 020 7758 4000

MANCHESTER  
Bonded Warehouse  
18 Lower Byrom Street  
Manchester  
M3 4AP  
T: 0161 834 8640

**ENTERPRISE CITY®** is a registered trademark of Allied London.

Misrepresentation Act. Allied London gives notice that (1) These particulars are a general outline only, for the guidance of prospective investors, purchasers or tenants, and do not constitute the whole or any part of an offer or contract; (2) Allied London cannot guarantee and accepts no liability whatsoever for the accuracy of any description, dimensions, references to condition, necessary permissions for use and occupation and other details contained herein and prospective purchasers or tenants must therefore not rely on them as agent, advisor or other representative statement of fact or representations and must satisfy themselves as to their accuracy; (3) No employee of Allied London has any authority to make or give any representations or warranty or enter into any contract whatever in relation to the property; (4) Rents quoted in these particulars may be subject to VAT in addition and (5) Allied London will not be liable, in negligence or otherwise, for any loss arising from the use of these particulars, (6) Space planning contained in this brochure is indicative only and may require modifications to the building design; (7) All floor plans are not to scale and are for identification purpose only and (8) all CGIs are indicative of the building and site only and are not an exact representation of the completed building. Design by Allied London 2021.



**ENTERPRISE CITY®**

---

**ST. JOHN'S**



***TRANSMISSION***