



1111 Manchester Road, Slaithwaite

3 Bedrooms • Large open plan kitchen/dining • Council tax band A • Located in Slaithwaite village • Watch our video tour!





Harvey & Ryall proudly present this beautifully appointed three-bedroom home, situated in the highly sought-after village of Slaithwaite.

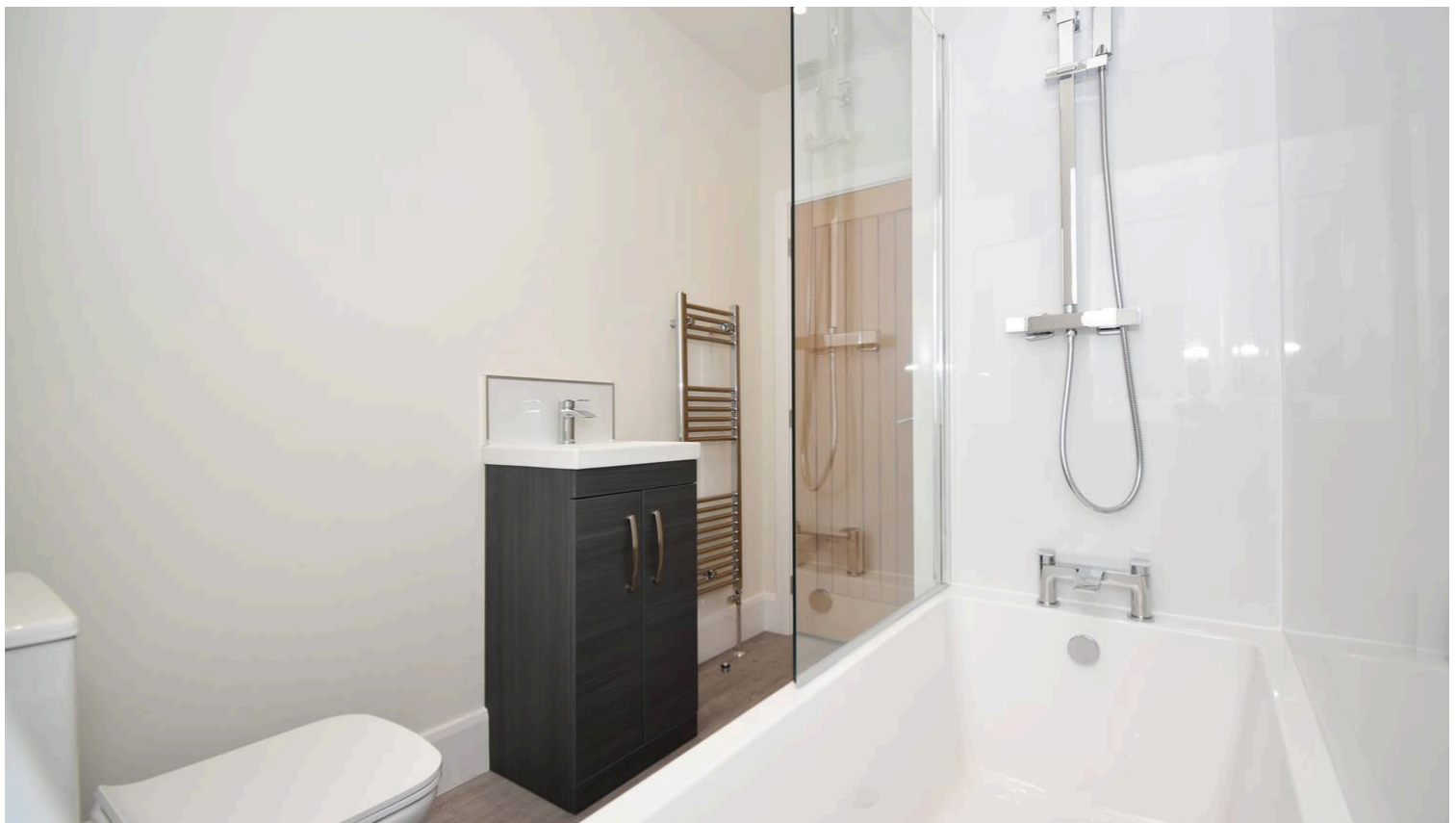
This traditional mid-terraced property has been finished to a high standard, offering generously proportioned reception rooms and bedrooms, along with private outdoor garden space.



Entrance Hallway 1.19m x 1.10m – Entrance hallway allowing access to lounge, kitchen and first floor.

Lounge 4.44m x 4.52m – Spacious lounge opening onto the kitchen/dining area, creating a modern open-plan feel. Features a natural stone fireplace with downlights and wall lights, providing excellent ambient lighting.

Kitchen/Dining 3.56m x 4.50m – A stunning, contemporary kitchen featuring ample wall and base unit storage with soft-close doors. It includes an integrated full-size dishwasher, a matte black sink and drainer with matching tap, and dedicated space for a freestanding washer and fridge-freezer. Finished with a stone-effect worktop and matching splashbacks, the kitchen is completed with elegant parquet-style vinyl flooring.





Master Bedroom (front) 4.44m x 3.17m – Spacious, carpeted double bedroom featuring a charming cast-iron fireplace. The room benefits from a window, radiator, TV point, and multiple power sockets.



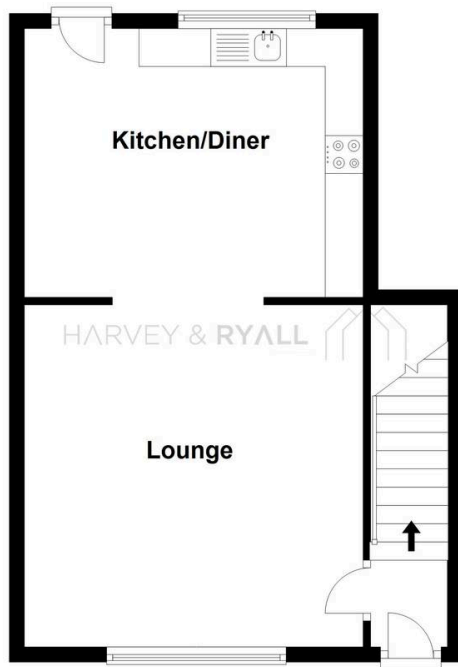
Bedroom 2 (rear) 3.56m x 3.40m (max) – Neutral, carpeted double bedroom featuring a radiator, TV point, and dual windows that fill the room with natural light.

Bedroom 3 (front) 3.44m x 2.48m – Cosy single bedroom, carpeted and featuring a radiator, window, and a built-in wardrobe with hanging space and shelving. Perfect use as a home office space.

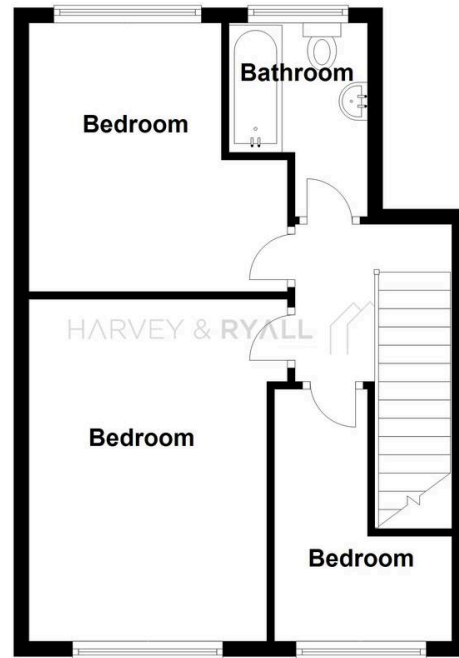


Bathroom (rear) 2.56m x 1.79m – A contemporary bathroom suite featuring a low-flush WC, vanity unit with storage, and wash hand basin. Complete with a chrome towel rail and a full-size bath with glass shower screen and rainfall-effect shower.

Ground Floor



First Floor



For illustration purposes only, not to scale.
Plan produced using PlanUp.

1111 Manchester Road, Huddersfield



HARVEY & RYALL

LETTINGS | SALES | COMMERCIAL