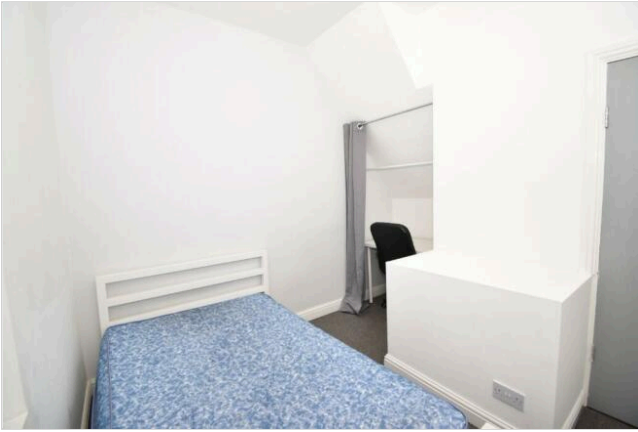
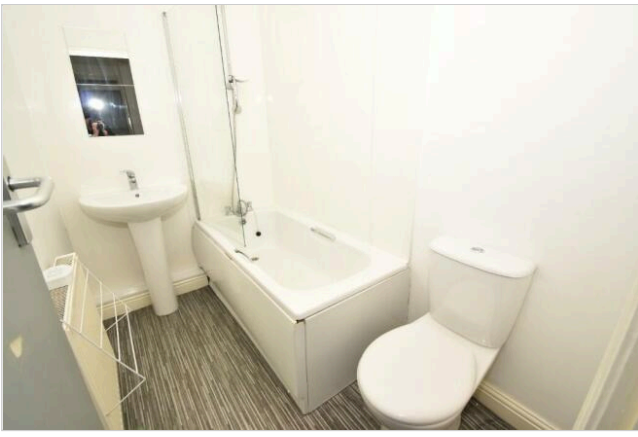


**4 bedroom terraced house to rent**  
Manchester Road, Huddersfield, West Yorkshire, HD1

**£825 pcm**  
tenancy info

Print





## Property Description

### Letting information:

Date available:

Now

Furnishing:

Unfurnished

Deposit:

£951

Letting type:

Long term

Added on Rightmove:

30 April 2024 (21 hours ago)

### Key features

■ 4 Double Bedrooms

■ Council Tax Band A

■ Located on main Bus route

### Full description

This spacious mid-terraced is available to move into from Monday 29th April. Offering 4 double bedrooms situated over 4 floors and off-road parking making it ideal for a growing family.

Situated on Manchester Road and in close proximity to schools, colleges, and Huddersfield town centre this property is in an ideal location.

### Key property details

**Windows & Doors** UPVC

**Heating powered by** Gas central heating

Accommodation Listing:

### Ground Floor

**Lounge/ Kitchen** 4.53m x 3.99m - Light open space with fitted blinds over the window, TV point + double sockets. The kitchen benefits from a range of wall and base units chrome extractor hood, integrated fridge freezer, and a washing machine.

### Lower Ground Floor

**Bedroom 1** 4.33m x 3.31m - Spacious bedroom with rear-facing window with fitted blinds, radiator, space for a double or king-size bed, and under stair cupboard space for extra storage. The boiler cupboard is also located in the lower ground floor bedroom.

### First Floor

**Bathroom** 2.30m x 1.48m - Modern 3-piece suite with WC, wash basin with mirror fitted to the wall above, full-size bath with overhead shower and glass screen in addition to an extractor fan and radiator.

**Bedroom 2** 3.23m x 3.02m - Large window with fitted blinds, radiator, sink, and space for a double or king-size bed.

**Bedroom 3** 2.86m x 2.43m - Large window with fitted blinds, radiator, space for a double bed, sink, and a rail fitted to the wall for storage.

### Second Floor

**Bedroom 4** 3.08m x 2.63m - Double bedroom with skylight windows with fitted blinds, radiator, sink, and space for a double bed.

**Parking arrangements** Off-road parking is available to the rear of the property.

**Council Tax Band** - A

**Energy Performance Rating** - D

**Deposit/Bond** - £951.00

**Mains Gas** - Yes

**Mains Electricity** - Yes

**Mains Water** - Yes

**What 3 Words location** - //dull.with.kept

**Viewing** - By appointment with Harvey & Ryall

**Contract** A draft AST is available for review upon request.

### Additional Details

Talk about the area (anything local that's handy or close etc)

- 0.0 Miles from Bus stop

- 0.9 Miles from Huddersfield Railway Station

- 0.9 miles from Kingsgate Shopping Centre

This property is marketed and listed by Harvey & Ryall.

Check out our 5 star google reviews!

**LANDLORDS - Would you like your property to be listed with this level of detail and quality? Our service from start to finish is 5 STARS. Please contact us to arrange your own Property Rental Appraisal & Assessment.**

#### More information from this agent

To view this media, please visit the on-line version of this page at [www.rightmove.co.uk/property-to-rent/property-147206618.html](http://www.rightmove.co.uk/property-to-rent/property-147206618.html)

#### Energy Performance Certificates (EPCs)

To view this media, please visit the on-line version of this page at [www.rightmove.co.uk/property-to-rent/property-147206618.html](http://www.rightmove.co.uk/property-to-rent/property-147206618.html)

---

map view

street view

Note: The pin shows the centre of the property's postcode, and does not pinpoint the exact address The pin shows the exact address of the property Street View is unavailable in this location You're in the centre of the property's postcode. Start exploring the local area from here. Take me back to the start

#### Nearest stations

Lockwood (0.6 mi)

Huddersfield (0.6 mi)

Berry Brow (1.5 mi)

Distances are straight line measurements from centre of postcode

**Disclaimer** - Permitted payments may apply when renting a property in England or Wales. For more details please go to the Tenancy Info link (alongside the advertised rental price) or contact the agent.

Property reference 148ManchesterRd. The information displayed about this property comprises a property advertisement. Rightmove.co.uk makes no warranty as to the accuracy or completeness of the advertisement or any linked or associated information, and Rightmove has no control over the content. This property advertisement does not constitute property particulars. The information is provided and maintained by **Harvey & Ryall, Huddersfield**.

Please refer to our Renting Guides for further information on how to safely rent a property.

\* Average speeds are based on the download speeds of at least 50% of customers at peak time (8pm to 10pm) from packages available on comparethemarket.com. Speed can be affected by a range of technical and environmental factors. The speed you receive where you live may be lower than that listed above. You can check the estimated speed to your property prior to purchasing. Fibre/cable services at your postcode are subject to availability. You can confirm availability on the provider's website. Providers may increase charges. You should have the right to exit your contract without penalty if this happens. The information is provided and maintained by **Decision Technologies Limited**.

Map data ©OpenStreetMap contributors.