

1A Old Haymarket 73-89 Victoria Street, Liverpool, L1 6AF  
Tel: 0151 305 2577  
Email: [liverpoolsales@ascendproperties.com](mailto:liverpoolsales@ascendproperties.com)  
[www.ascendproperties.com](http://www.ascendproperties.com)

# Ascend

Built on higher standards



## Alexandra Tower, 19 Princes Parade, Liverpool

£1,050 PCM

This is your chance to live in a prime waterfront location, right on Princes Dock in Liverpool. This iconic and imposing development has a range of 1 and 2-bedroom apartments available and is in an ideal location for students and commuters alike.

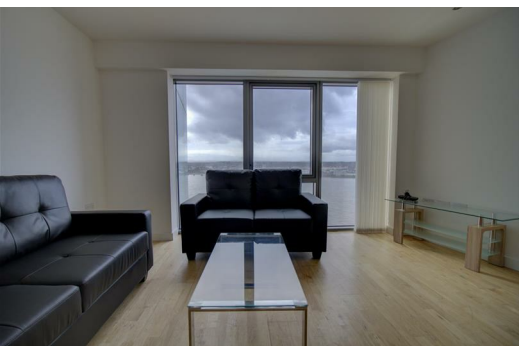
This apartment is absolutely spot-on. Inside you'll find a bright open-plan kitchen/lounge/dining room with huge windows. The kitchen is super-sleek with wooden flooring, white cabinets, chrome handles and an integrated hob/oven. The bedrooms are good sized doubles with plush carpeting underfoot - the perfect haven to relax away from the hustle and bustle of the city - and the modern, tiled bathrooms are equally as luxurious.

A short stroll from your apartment takes you into the heart of Liverpool, where you'll have more bars, restaurants, eateries and shops than you could shake a stick at.

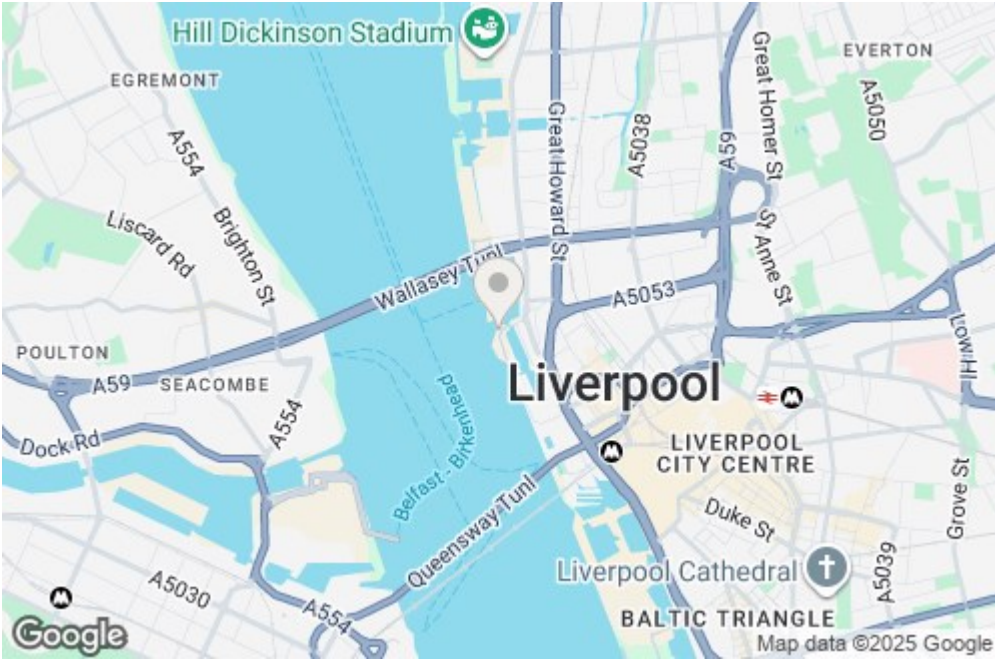
If you'd like to wander further afield, you have a huge range of transport links at your fingertips, along with easy access to the whole of Liverpool and beyond - you really couldn't be more perfectly located. With a bus stop practically on your doorstep and James Street train station just a short stroll away, commuting is a breeze.

Properties like this tend to get snapped up quickly, so make sure you give us a call if you fancy a closer look. And just so you know, the images are for marketing purposes only, so the fixtures and fittings may vary.

\*Available 20th October 2025\*  
Deposit - £1,210  
Council Tax Band - D  
Furnished



156, Alexandra Tower 19 Princes Parade, Liverpool, Merseyside, L3 1BF



Energy Efficiency Rating			Environmental Impact (CO <sub>2</sub> ) Rating		
Very energy efficient - lower running costs	Good	Poor	Very environmentally friendly - lower CO <sub>2</sub> emissions	Good	Poor
92-100 A			35-45 A		
82-91 B			46-55 B		
72-81 C			56-65 C		
62-71 D			66-75 D		
52-61 E			76-85 E		
42-51 F			86-95 F		
31-41 G			96-100 G		
Not energy efficient - higher running costs			Not environmentally friendly - higher CO <sub>2</sub> emissions		