



17 North John Street, Liverpool

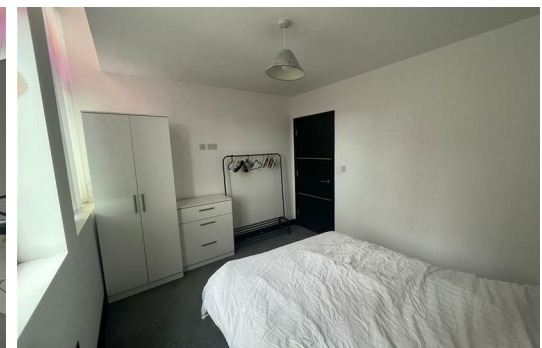
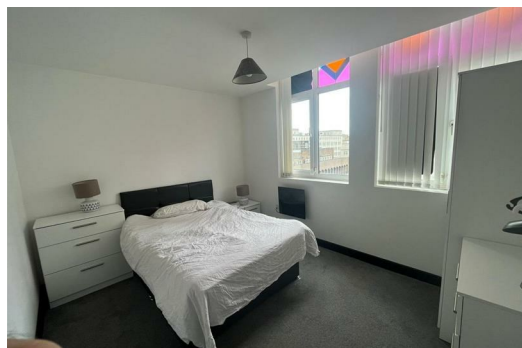
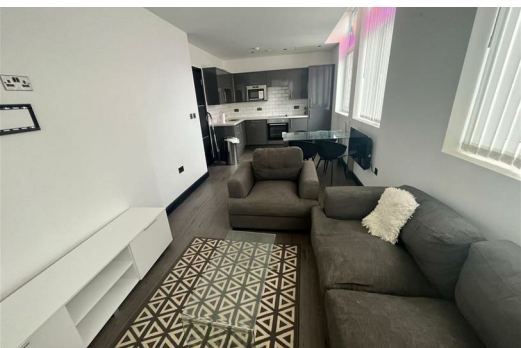
£1,150 PCM

Ascend Properties proudly presents this exquisite two-bedroom apartment located within the newly renovated North House development, nestled in the vibrant heart of Liverpool City Centre.

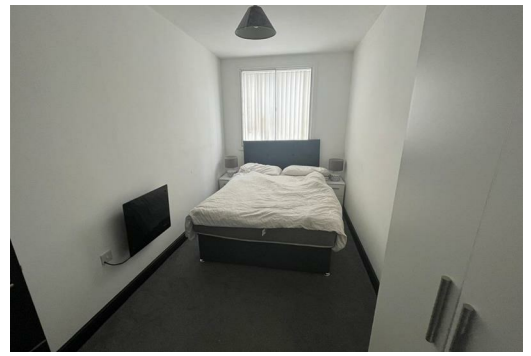
Upon entering, this apartment exudes an impeccable blend of elegance and modernity. The generously proportioned living space is tastefully furnished, boasting polished wooden floors and expansive windows that offer captivating panoramic views that are nothing short of breathtaking. The contemporary kitchen is a culinary haven, adorned with sleek grey cabinetry and a seamlessly integrated hob/oven ensemble.

Positioned perfectly within the bustling city center, a wealth of conveniences awaits right at your doorstep. An array of exceptional bars, dining establishments, and retail havens are mere moments away. The proximity of Moorfields station, a mere 3-minute stroll, ensures effortless city-wide and beyond commuting possibilities. Moreover, your residence finds itself a mere 500 feet from Liverpool ONE, further enhancing the allure of this remarkable apartment.

\*Available 22nd October 2024\* 12 month tenancy. Deposit £1,380 Council Tax Band C.



42 17 North John Street, Liverpool, L2 5QY



Energy Efficiency Rating		Environmental Impact (CO <sub>2</sub> ) Rating	
Score	Band	Score	Band
92-100	A	100-120	A
81-91	B	80-99	B
69-80	C	60-79	C
55-68	D	40-59	D
40-54	E	20-39	E
21-39	F	10-19	F
1-20	G	0-9	G