

The Strand, Drury Lane, Liverpool

£1,000 PCM

Available 21st October 2024

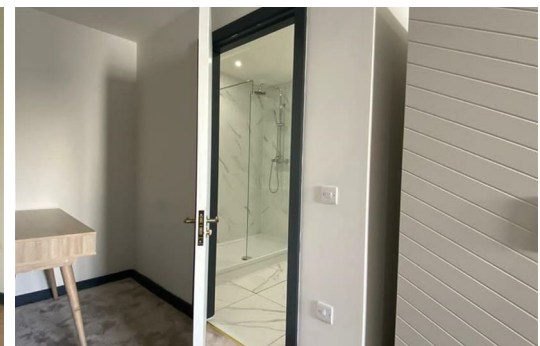
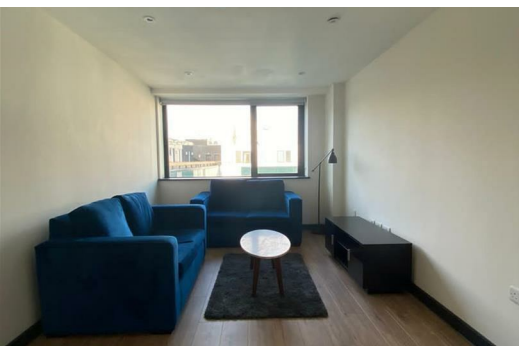
A magnificent One bedroom Apartment in a wonderful location, situated in Liverpool L2, offering amazing comfortable living and convenience with simplicity.

The Apartment is presented in outstanding condition and fitted with all the basic facilities like: 24 hour private gym, Close to public transport, Concierge, Double glazing, Fitted Kitchen, Fully furnished to high spec, Intercom entry system, Premium City Centre location, Shops and amenities nearby.

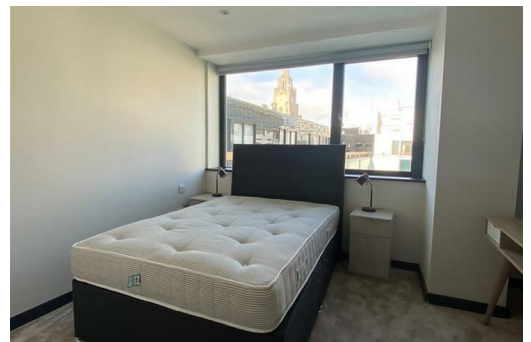
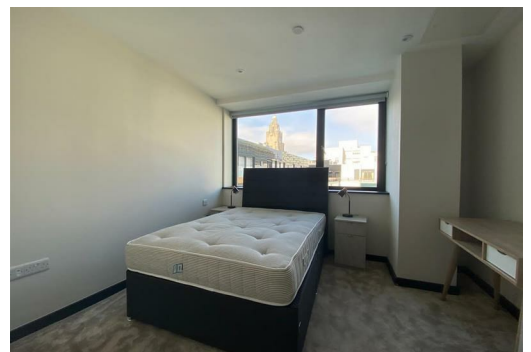
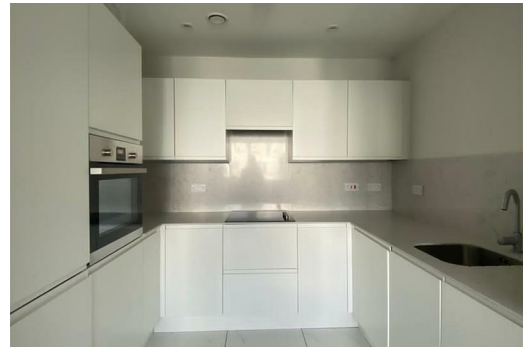
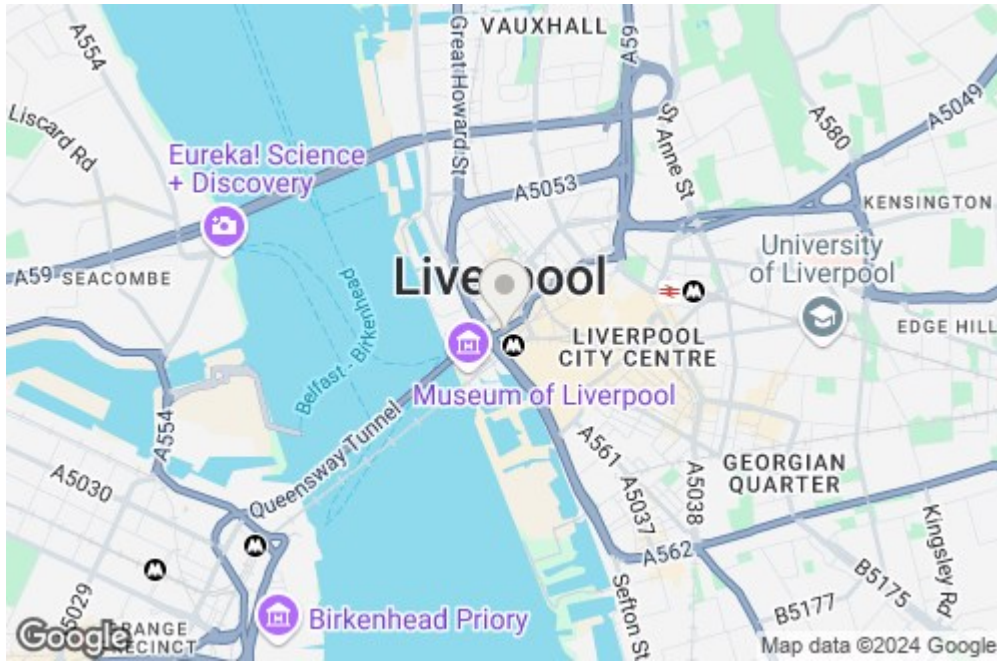
An early viewing is highly recommended to avoid disappointment.

Images are for marketing purposes only.

12 Month tenancy. Council Tax Band C. Deposit £1,260. Available 4th December 2024



22 Strand Plaza Drury Lane, Liverpool, Merseyside, L2 0PH



Energy Efficiency Rating		Environmental Impact (CO ₂) Rating	
Current	Potential	Current	Potential
100-125 kWh/m ² (A)	81	100-125 g/m ² (A)	81
126-150 kWh/m ² (B)	81	126-150 g/m ² (B)	81
151-175 kWh/m ² (C)	81	151-175 g/m ² (C)	81
176-200 kWh/m ² (D)	81	176-200 g/m ² (D)	81
201-225 kWh/m ² (E)	81	201-225 g/m ² (E)	81
226-250 kWh/m ² (F)	81	226-250 g/m ² (F)	81
251-300 kWh/m ² (G)	81	251-300 g/m ² (G)	81