



Jenkinson Lane, Ellesmere Port

£1,150 PCM

Welcome to DiRent homes at Cromwell Road. Located in Ellesmere Port, Cromwell Road is an impressive new development of 98 desirable family homes, 6 miles from Chester town centre. Cromwell Road offers a wide range of amenities and transport links, making it the perfect location for families and couples.

The beautifully designed Weaver UP makes a wonderful family home or a spacious haven for couples. The front door leads you straight into the hallway with a WC to one side. Further on is the contemporary open-plan kitchen and dining area. Beyond this is the comfortable living room with plenty of space and fabulous French windows that open out onto the garden. Great news if you enjoy al fresco dining and entertaining.

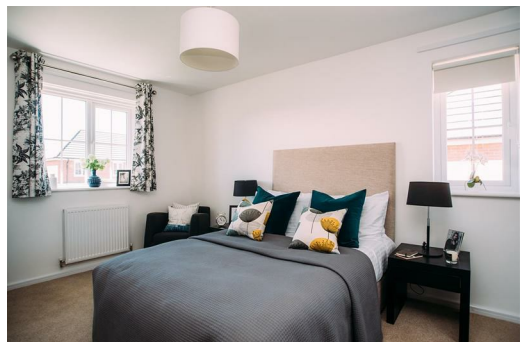
Thanks to the underpass, the upstairs area is more spacious than the standard Weaver property. The generously sized master bedroom comes with en-suite shower room and there's another double bedroom and a single bedroom. The family sized bathroom offers a bath and shower.

Modern and energy-efficient, the Weaver is built to high standards with beautiful flooring throughout, and fitted alarm systems provide extra security and peace of mind.

Deposit: £1320
Unfurnished
Council tax: A
Available 17th October 2024



42 Jenkinson Lane, Ellesmere Port, CH65 4BR



Energy Efficiency Rating		Environmental Impact (CO ₂) Rating	
Current	Potential	Current	Potential
85	97	88	93