



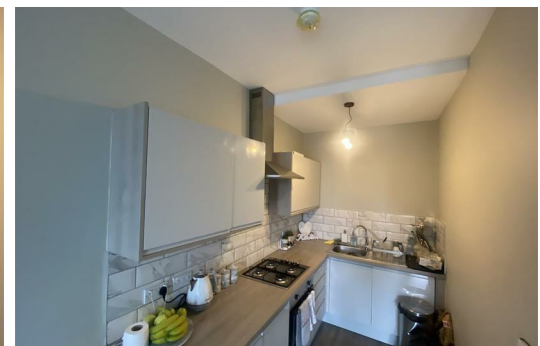
Derby Lane, Liverpool

£100,000

Located within one of Liverpool's most desirable suburbs, this stunning one bedroom apartment in Regency Court is the perfect place to call home.

Within a brand-new development of 16 gorgeous self-contained apartments, this property manages to combine luxury with convenience in the best way. Upon entering the apartment, there is a lovely open-plan living room topped off with a sleek fully-equipped kitchen that provides the most fabulous space for entertaining or simply winding down after a long day.

The location is spot on too. Just a few minutes' drive from Liverpool City Centre, you'll be able to enjoy all the city's sights, including Liverpool One shopping mall and Albert Dock's attractions.



5a, Regency court Derby Lane, Liverpool, L13 6AB



Energy Efficiency Rating		Environmental Impact (CO ₂) Rating	
Current	Potential	Current	Potential
100-120 kWh/m ² (A)	80-90	100-120 g/m ² (A)	80-90
120-135 kWh/m ² (B)	75-80	120-135 g/m ² (B)	75-80
135-150 kWh/m ² (C)	70-75	135-150 g/m ² (C)	70-75
150-170 kWh/m ² (D)	65-70	150-170 g/m ² (D)	65-70
170-190 kWh/m ² (E)	60-65	170-190 g/m ² (E)	60-65
190-210 kWh/m ² (F)	55-60	190-210 g/m ² (F)	55-60
210+ kWh/m ² (G)	50-55	210+ g/m ² (G)	50-55