



Longmoor Lane, Liverpool

£650 PCM

Fancy living in a slice of Liverpool's history just 20 minutes away from the city centre? Don't miss out on this incredibly unique and brand new development in Liverpool. Situated within a beautiful original building, this development of 1, 2 and 3 bedroom apartments has been given a breath of new life.

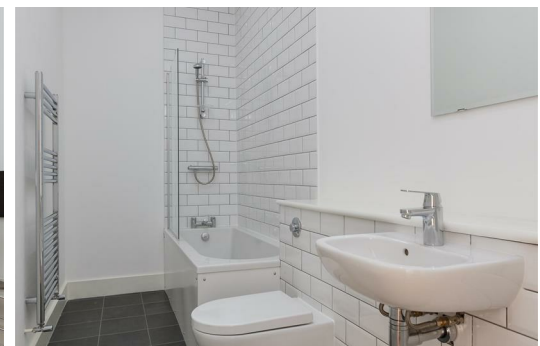
The eye-catching exterior is matched by the equally stunning interior and inside you're instantly greeted by a vast entrance hall that features a grand staircase leading to the upper floors.

Venture further and you'll discover a bright, airy interior, complete with high ceilings, a neutral design and sleek fixtures and fittings throughout. Here you'll be able to kick back and relax in rooms which boast an incredible amount of space. You can also enjoy a sleek kitchen which comes complete with integrated appliances, a modern tiled bathroom and a plush bedroom which is flooded with natural light.

Situated just minutes away from Aintree racecourse and hospital – these apartments are ideal for those looking for a quiet retreat with easy access to the action of Liverpool city centre. With several parks, schools and amenities just a stone's throw away, you'll have everything you could possibly need within easy reach.

Interested in taking a closer look? Make sure to give our team call today. Images are for marketing purposes only.

Deposit - £750
Council Tax band - A
12 months - Mark Lewin
Available 1st August 2024



6, 10 Clock Tower Longmoor Lane, Liverpool, Merseyside, L10 1LD



Energy Efficiency Rating		Environmental Impact (CO ₂) Rating	
Current	Potential	Current	Potential
77	83	62	81

Energy Efficiency Rating: 77 (Current), 83 (Potential). Environmental Impact (CO₂) Rating: 62 (Current), 81 (Potential).