



## Carriage Grove, Bootle

£750 PCM

Ascend are pleased to offer for rent this modern two bedroom apartment.

A magnificent 2 bedroom newly renovated Apartment in a wonderful location, situated in Liverpool L20, offering amazing comfortable living and convenience with simplicity.

The Apartment is presented in outstanding condition and fitted with all the basic facilities like: Close to public transport, Communal Garden, Double glazing, Fitted Kitchen, Fully furnished to high spec, Intercom entry system.

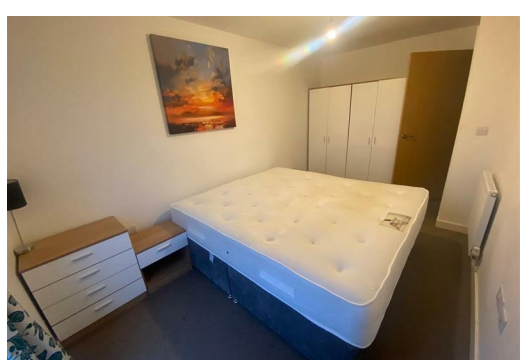
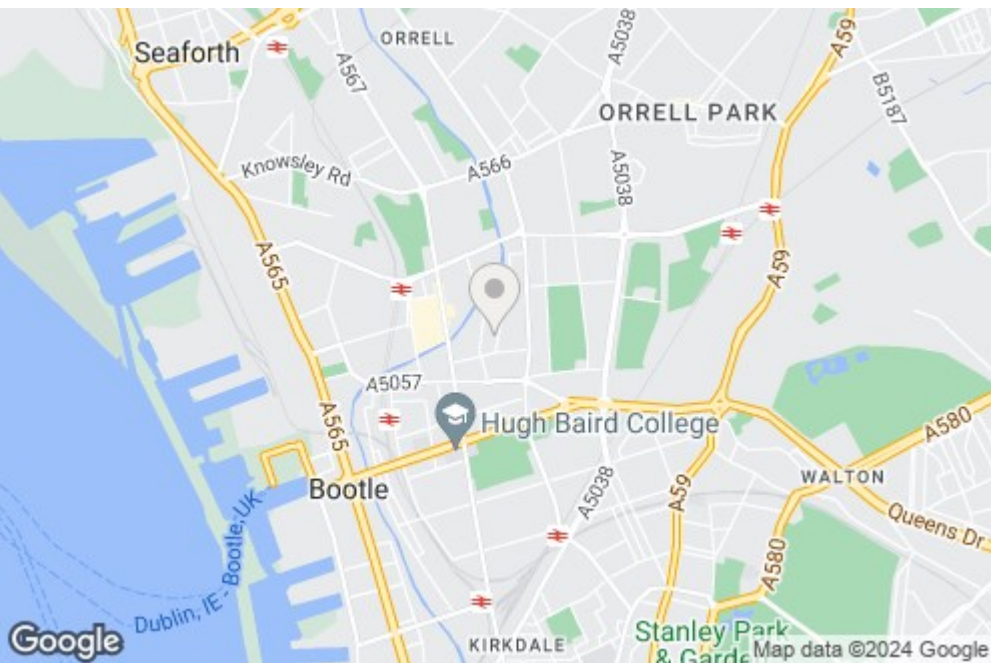
Bills are not included in rental price.

The images for this property are for marketing purposes only. The fixtures, fittings and furnishings may vary.

Available 15th August 2024  
Deposit: £860  
12 Month Tenancy  
Council Tax Band A



3B Wishing Well Carriage Grove, Bootle, Merseyside, L20 3JF



Energy Efficiency Rating		Environmental Impact (CO <sub>2</sub> ) Rating	
Current	Potential	Current	Potential
75	77	B	B
70-74	76	C	C
65-69	75	D	D
60-64	74	E	E
55-59	73	F	F
50-54	72	G	G