



## New Chester Road, Birkenhead

£895 PCM

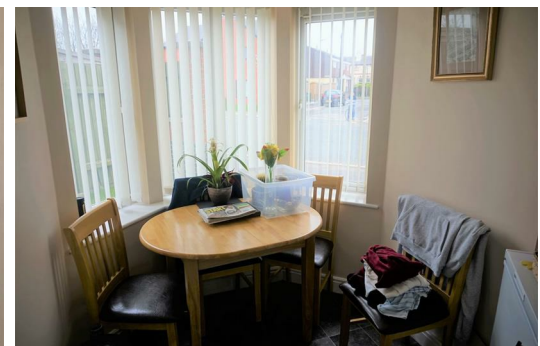
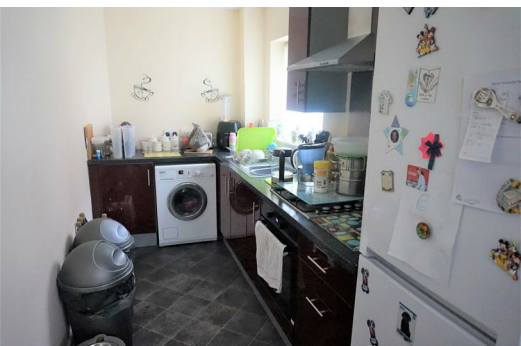
Situated in Birkenhead, this four bedroom semi-detached house is absolutely ideal for families or sharing professionals. Smartly presented with a front garden area, you'll be perfectly placed to reach Liverpool and everything else the city has to offer.

Take a step inside and you'll discover a bright, spacious interior - which comes unfurnished so you can drop your bags and settle in right away. The downstairs benefits from a fresh, neutral design with double doors in the lounge opening up into your own private garden - perfect for lighting up the BBQ in the summer. There is also a stylish fully-equipped kitchen which has been finished to a great standard. Upstairs you'll find four bedrooms - two super-spacious doubles and two generous-sized singles - as well as two modern tiled bathrooms.

You'll have a bus stop just a few minutes from the property, along with Rock Ferry train station just a short stroll away - so you're within easy reach of Liverpool which is just 15 minutes away by car or 25 minutes by public transport. Not only is the heart of the city centre within easy reach, there are also some great local amenities for you to enjoy: whether that's getting some groceries or grabbing a bite to eat, the surrounding area has this covered.

If you're interested in having a closer look, or have any questions, do get in touch. And just so you know, the pictures for this house are for marketing purposes only. The internal fixtures, fittings and furnishings may vary.

\*\*Available 29th July 2024\*\* 6 month tenancy. Deposit £1,030. Council Tax Band C.





553 New Chester Road, Birkenhead, Merseyside, CH42 2AQ



Energy Efficiency Rating		Environmental Impact (CO <sub>2</sub> ) Rating	
Current	Potential	Current	Potential
83	83	70	78

The table displays energy and environmental ratings. The Energy Efficiency Rating is 83 (Current) and 83 (Potential). The Environmental Impact (CO<sub>2</sub>) Rating is 70 (Current) and 78 (Potential). The ratings are shown on a scale from A (green) to G (red).