



Parkfield Road, Liverpool

Asking Price £1,500,000

The Oaks - State-of-the-Art 4-Bedroom Modern Home in Liverpool

Welcome to this newly converted, state-of-the-art 4-bedroom home in Liverpool, the ultimate footballer's paradise. Every aspect of this property has been meticulously designed and features brand-new, high-end finishes throughout.

Key Features:

- 4 Car Driveway: Ample parking space for multiple vehicles, ensuring convenience and security.
- Infinity Powered Swimming Pool: Featuring a luxurious hot tub, a pool room, and a kitchenette, perfect for relaxation and entertaining.
- Cinema Room with Private Bar: An immersive home theater experience complemented by a private bar, ideal for hosting movie nights or sports viewings.
- Roof Terrace from the Master Bedroom: A private outdoor space offering stunning views, accessible directly from the master bedroom.
- State-of-the-Art Wren Kitchen: A chef's dream, equipped with top-of-the-line appliances and sleek, modern design.
- Free Standing Fireplace: Adding a touch of elegance and warmth to the living space.
- Modern Onyx Rock Walls with LED Lights: Strikingly beautiful walls enhanced with ambient LED lighting, creating a sophisticated and contemporary atmosphere.



The Oaks, Parkfield Road, Liverpool, L17 8UJ

Kitchen/Living/Dining room
30'4" x 21'7" (9.27 x 6.58)

State-of-the-Art Wren Kitchen: A chef's dream, equipped with top-of-the-line appliances and sleek, modern design. making it perfect to host any occasion.

Free Standing Fireplace: Adding a touch of elegance and warmth to the living space.

Dining room
24'6" x 12'11" (7.49 x 3.96)

Office Space/Dining Room: A versatile area that can function as a home office or a dining room, catering to your lifestyle needs.

Cinema room/Bar
22'0" x 17'5" (6.71 x 5.31)

Cinema Room with Private Bar: An immersive home theater experience complemented by a private bar, ideal for hosting movie nights or sports viewings.

Family room/ Pool room
14'11" x 19'3" (4.57 x 5.89)

Family room/Pool room, fitted with a kitchenette, perfect for relaxation and entertaining.

Swimming pool
20'8" x 20'4" (6.31 x 6.20)

Fitted with state of the art Tiles and LED lights. with double gliding windows opening up to the outdoor hot tub.

Bedroom 1
17'7" x 14'2" (5.36 x 4.34)

Step into the epitome of luxury with this master bedroom, designed to be your private sanctuary. This spacious retreat features:

En Suite Bathroom: A modern and elegantly designed space complete with high-end fixtures, offering both style and convenience.

Free Standing Bath: Indulge in ultimate relaxation with a luxurious free-standing bath, the perfect spot to unwind after a long day.

Roof Terrace: Step out onto your private roof terrace, an exclusive outdoor space that offers stunning views and a serene environment for morning coffee or evening relaxation

Bedroom 2
17'7" x 9'6" (5.36 x 2.92)

Welcome to Bedroom 2, a spacious and bright retreat designed for comfort and functionality. This inviting bedroom features:

Fitted Wardrobes: Ample storage space with sleek, built-in wardrobes, keeping your room clutter-free and organized.

Bright Atmosphere: Large windows allow natural light to flood the room, creating a warm and welcoming ambience.

Bedroom 2 offers the perfect blend of space, light, and storage, making it an ideal sanctuary for relaxation.

Bedroom 3
13'8" x 12'0" (4.17 x 3.68)

Welcome to Bedroom 3, a spacious double bedroom perfectly situated above the pool room. This generously sized room offers:

Spacious Layout: Plenty of room for a double bed and additional furniture, ensuring comfort and versatility.

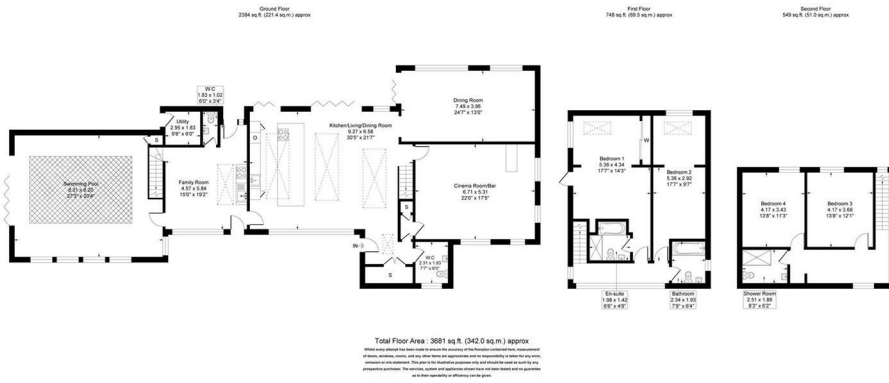
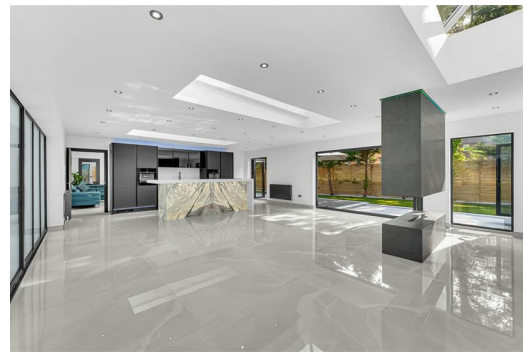
Prime Location: Positioned above the pool room, providing a unique and serene atmosphere.

Bedroom 3 is an ideal retreat, combining ample space with a prime location for a tranquil living experience.

Bedroom 4
13'8" x 11'3" (4.17 x 3.43)

Welcome to Bedroom 4, a spacious double bedroom perfectly situated above the pool room. This generously sized room offers:

Spacious Layout: Plenty of room for a double bed and additional furniture, ensuring comfort and versatility.



Energy Efficiency Rating		Environmental Impact (CO ₂) Rating	
Energy Efficiency	Energy Efficiency	Environmental Impact	Environmental Impact
A	A	A	A
B	B	B	B
C	C	C	C
D	D	D	D
E	E	E	E
F	F	F	F
G	G	G	G