



Eastbrook Village, Liverpool, L31

£1,015 PCM

We are pleased to present Eastbrook Village, a development comprising of two, three and four-bedroom homes in the town of Maghull. Just 10 miles north of Liverpool, and designed with a comfortable and contemporary lifestyle in mind, this development is the ideal sanctuary for young professionals and families alike.

Step into the living and prepare to be captivated by the striking open-plan kitchen, living, and dining area that seamlessly stretches from the front to the rear of the property.

This beautifully designed space optimises every inch available for your convenience, featuring integrated appliances, a ground-floor W/C and a storage cupboard tucked neatly beneath the stairs.

The entire room is generously bathed in natural sunlight streaming through the French doors, providing easy access to the rear garden where you and your family can enjoy the fresh air.

Moving to the next level, you'll find that every bit of space has been put to good use, with a master bedroom and an additional double bedroom, providing the perfect place to call it a night. There's also a contemporary three-piece family bathroom for your comfort.

To round off this exceptional property, it comes with its own private driveway.

Deposit: £1,170
Council Tax Band TBA
Unfurnished
Available Now



THE IRWELL
TWO BEDROOM HOME
662 SQFT
61.5 M²



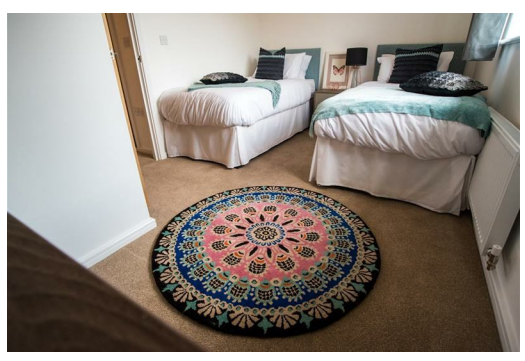
GROUND FLOOR

| | | |
|--------------------|---------------|---------------|
| LIVING/DINING ROOM | 4.07M X 3.97M | 13'4" X 13' |
| KITCHEN | 3.22M X 3.50M | 10'7" X 11'6" |

FIRST FLOOR

| | | |
|----------------|---------------|---------------|
| MASTER BEDROOM | 4.07M X 2.57M | 13'4" X 8'6" |
| BEDROOM 2 | 4.07M X 2.71M | 13'4" X 8'11" |

■ SVP



| Energy Efficiency Rating | | Environmental Impact (CO ₂) Rating | |
|--------------------------|-----------|--|-----------|
| Current | Potential | Current | Potential |
| 84 | 98 | B | B |