

1A Old Haymarket 73-89 Victoria Street, Liverpool, L1 6AF
Tel: 0151 305 2577
Email: liverpoolsales@ascendproperties.com
www.ascendproperties.com

Ascend

Built on higher standards



Longmoor Lane, Liverpool

Asking Price £120,000

****Investment only**** Welcome to a unique investment opportunity nestled in a serene and historic setting, just moments away from the excitement of Aintree Racecourse and the essential amenities of the nearby hospital. This meticulously maintained three-bedroom apartment is situated within a charming Grade II listed building, offering a blend of classic elegance and modern convenience.

As you step into this spacious apartment, you are greeted by a sense of warmth and character that can only be found in a historic property. The interior boasts a harmonious fusion of period features and contemporary finishes, creating a truly timeless ambience.

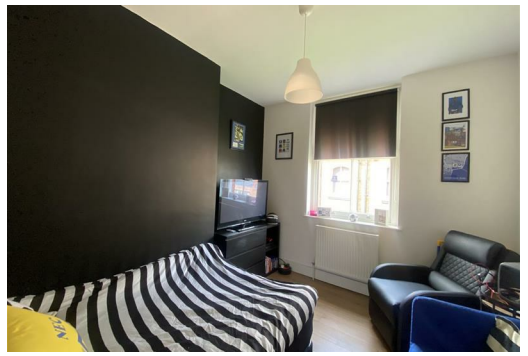
The generously proportioned living spaces are flooded with natural light, providing a comfortable and inviting atmosphere for residents and guests alike. Whether you're unwinding after a busy day or entertaining friends and family, this apartment offers the perfect backdrop for every occasion.

Situated in a quiet development, residents can enjoy the convenience of tranquil surroundings while still being within easy reach of local amenities and transport links. Whether you're a seasoned investor or a first-time buyer looking to expand your portfolio, this property presents an excellent opportunity for long-term growth and stability.

With its prime location near Aintree Racecourse and the hospital, this apartment is ideally positioned to attract tenants seeking both convenience and tranquility. Don't miss your chance to invest in this unique piece of history and secure a promising future in one of Liverpool's most sought-after locations. Schedule your viewing today and experience the timeless charm of this gem.



4, 4 Clock Tower Longmoor Lane, Liverpool, L10 1LD



Energy Efficiency Rating		Environmental Impact (CO ₂) Rating	
Current	Potential	Current	Potential
74	74	67	74