

GEORGE LANE, SOUTH WOODFORD
£1,450 Per Calendar Month
1 Bed Flat



Features:

- Available Now!
- Brand New Apartment
- One Bedroom
- Separate Kitchen
- Modern Decor
- Private Balcony
- No Parking
- Located Seconds away from South Woodford Station

An exceptionally well realised one bedroom balcony apartment, with plenty of natural light, high ceilings and exceptional finishes throughout. You're perfectly placed too, right on the social hub of George Lane and moments from South Woodford tube.

Epping Forest's endlessly explorable open greenery is around fifteen minutes on foot. Whether you head out for a morning jog or an evening stroll, you'll forget you're in London.

REQUEST A VIEWING
0203 397 2222

E11, E7, E12 & E15
hello11@stowbrothers.com
0203 397 2222

E4 & N17
hello4@stowbrothers.com
0203 369 6444

E17 & E10
hello17@stowbrothers.com
0203 397 9797

E18 & IG8
hello18@stowbrothers.com
0203 369 1818

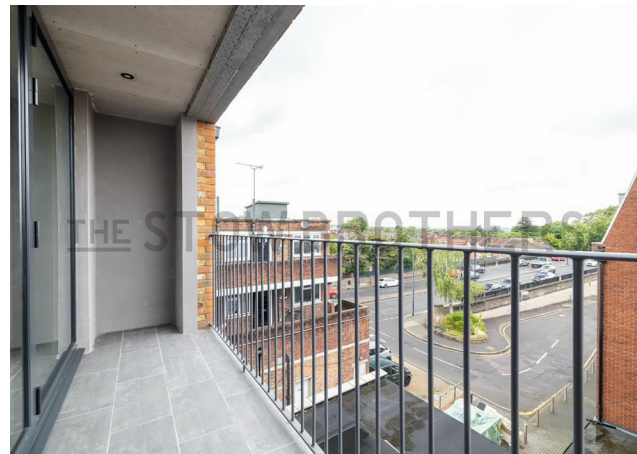
E8, E9, E5, N16, E3 & E2
hellohackney@stowbrothers.com
0208 520 3077

New Homes
newhomes@stowbrothers.com
0203 325 7227

Investment & Development
id@stowbrothers.com
0208 520 6220

Property Maintenance
propertymanagement@stowbrothers.com
0203 325 7228

STOWBROTHERS.COM
@STOWBROTHERS



IF YOU LIVED HERE...

Your reception sits to the front, impeccably generous at around 200 square feet, lit by a pair of high bright windows and with sleek blonde hardwood running underfoot, complementing the immaculate aesthetic. Next door your family bathroom is just as polished, with large format smoky grey tilework running underfoot and from floor to ceiling.

Your kitchen's yet another immaculate, box fresh space. More blonde hardwood floors, sleek and seamless cabinets, dark quartz style counters and striking,

oversized marbled tiling on the splashback. To the rear your bedroom is an impressive double, around 120 square feet, still in that signature white and blonde palette. Step out from here onto your balcony, for slate grey tiling underfoot plus roof and treetop views.

George Lane is South Woodford's social hub, home to a fine choice of everything from cafes to supermarkets to gastropubs and restaurants. There's even an art deco Odeon cinema at the top, less than five minutes from your new front door. For your new local, the lane's namesake gastropub The George is a good bet, a decent range of beers and wines and a delicious menu.



WHAT ELSE?

- South Woodford tube is less than five minutes on foot for the Central line and regular, direct and speedy runs to the City and West End.
- If you want to stroll off of George Lane a little way you can find Ark Fish, Sakura, and other eclectic eateries arranged along Hermon Hill, just a few minutes away.
- As well Epping Forest to the west, you have the greenery of Roding Valley Park to the east, so you can vary up your running route.

REQUEST A VIEWING
0203 397 2222

FOLLOW US ➡ @STOWBROTHERS
STOWBROTHERS.COM