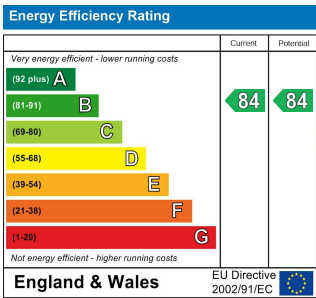
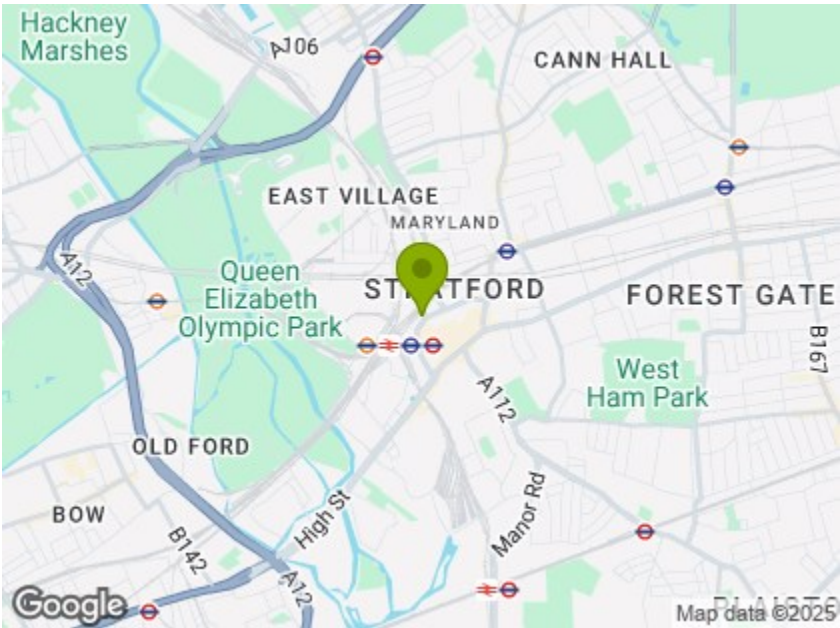


TWENTY SIXTH FLOOR

Total Area (Excluding Balcony): 50.3 m² ... 541 ft²

Whilst every attempt has been made to ensure the accuracy of the floor plan contained here, measurements of doors, windows, rooms and any other items are approximate and no responsibility is taken for any error, omission, or mis-statement. This plan is for illustrative purposes only and should be used as such by any prospective purchaser. The services, systems and appliances shown have not been tested and no guarantee as to their operability or efficiency can be given.



## GREAT EASTERN ROAD, STRATFORD

£2,550 Per Calendar Month  
1 Bed Apartment



### Features:

- One Bedroom Apartment
- Twenty Sixth Floor
- Balcony with Views to London
- Open Plan Kitchen
- Fully Tiled Bathroom
- Concierge Service
- Residential Gym
- Minutes away from Stratford Station
- 12 Months Tenancy

A bold and beautiful one bedroom balcony apartment on the twenty sixth floor of Stratford's iconic Legacy tower, with jaw dropping views across East London and the City. Comprehensive travel links, green spaces and nightlife are all on your doorstep.

Thirty three storeys high, Stratford's Legacy Tower is an integral part of the Stratford skyline and features a residents' gym as well as a 24 hour concierge service.

REQUEST A VIEWING  
0203 397 2222

**E11, E7, E12 & E15**  
hello11@stowbrothers.com  
0203 397 2222

**E4 & N17**  
hello4@stowbrothers.com  
0203 369 6444

**E17 & E10**  
hello17@stowbrothers.com  
0203 397 9797

**E18 & IG8**  
hello18@stowbrothers.com  
0203 369 1818

**E8, E9, E5, N16, E3 & E2**  
hellohackney@stowbrothers.com  
0208 520 3077

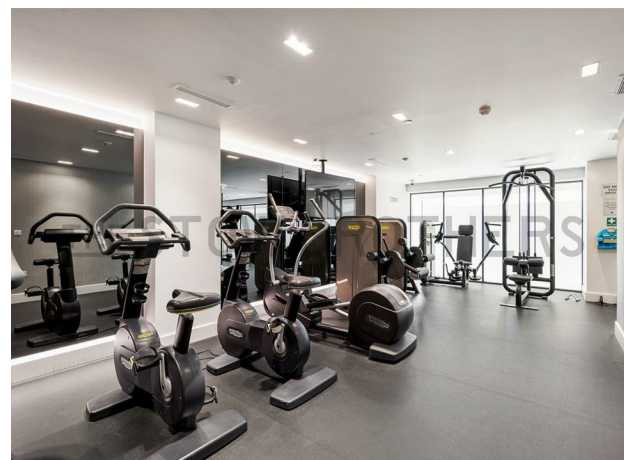
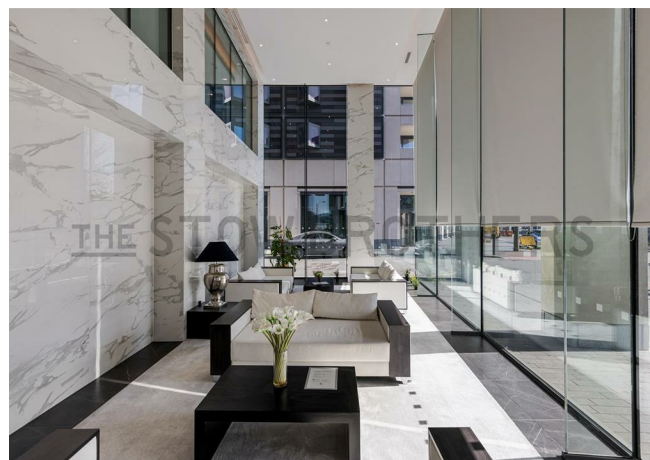
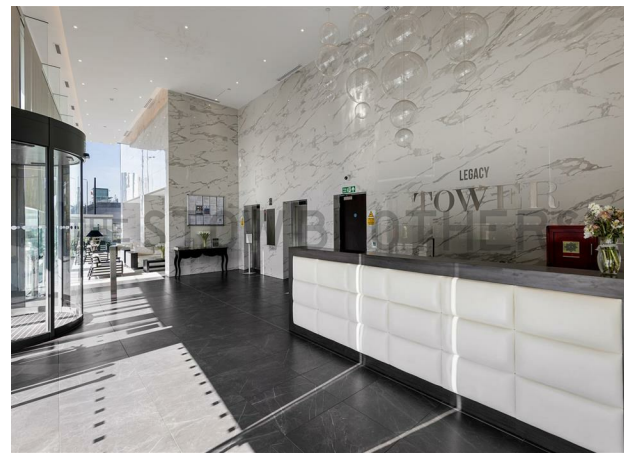
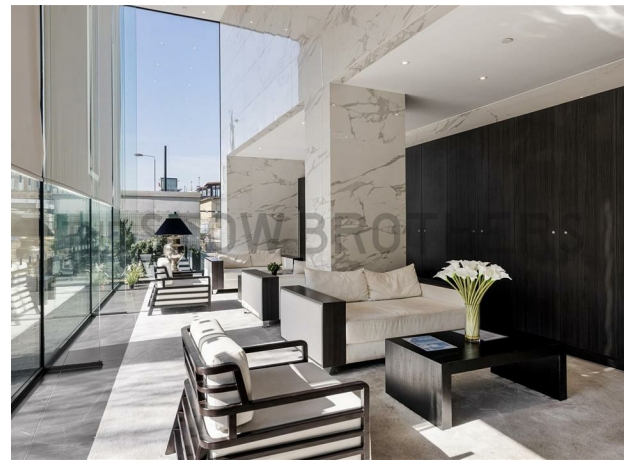
**New Homes**  
newhomes@stowbrothers.com  
0203 325 7227

**Investment & Development**  
id@stowbrothers.com  
0208 520 6220

**Property Maintenance**  
propertymanagement@stowbrothers.com  
0203 325 7228

STOWBROTHERS.COM  
@STOWBROTHERS





#### IF YOU LIVED HERE...

Finished to a luxurious standard throughout, this light filled one bedroom apartment is a tremendous find. Step inside and blonde hardwood flooring flows underfoot in your entrance hall, running on into your 250 square foot open plan kitchen and lounge. A suite of sleek and seamless cabinetry sits at one end, home to integrated appliances and chunky white worktops, while your balcony fills the opposite wall.

Natural light floods in via the wall to wall sliding doors, framing tremendous views even before you step outside. With a twenty six storey, South facing vista maximised by the glass balustrade, this is a splendid spot. It's sheltered too, so you can enjoy your balcony whatever the weather. Elsewhere your

bedroom's a substantial double, with mirrored storage and more floor to ceiling views, while the bathroom is a neat boutique affair with vessel sink and a rainfall shower.

Outside, and Stratford station is just a couple of minutes on foot, for the Jubilee and Central tube lines, the DLR, Mildmay overground and Elizabeth line services. All of London is easily accessible from here. That's not all, the famous Westfield shopping centre is just a few steps further. You can be strolling the broad promenades just five minutes after stepping out your front door. Finally, the diverse, inventive nightlife of East Village (the former Olympic Athlete's village, now reimagined as 'London's Coolest Postcode') is just half a mile on foot.



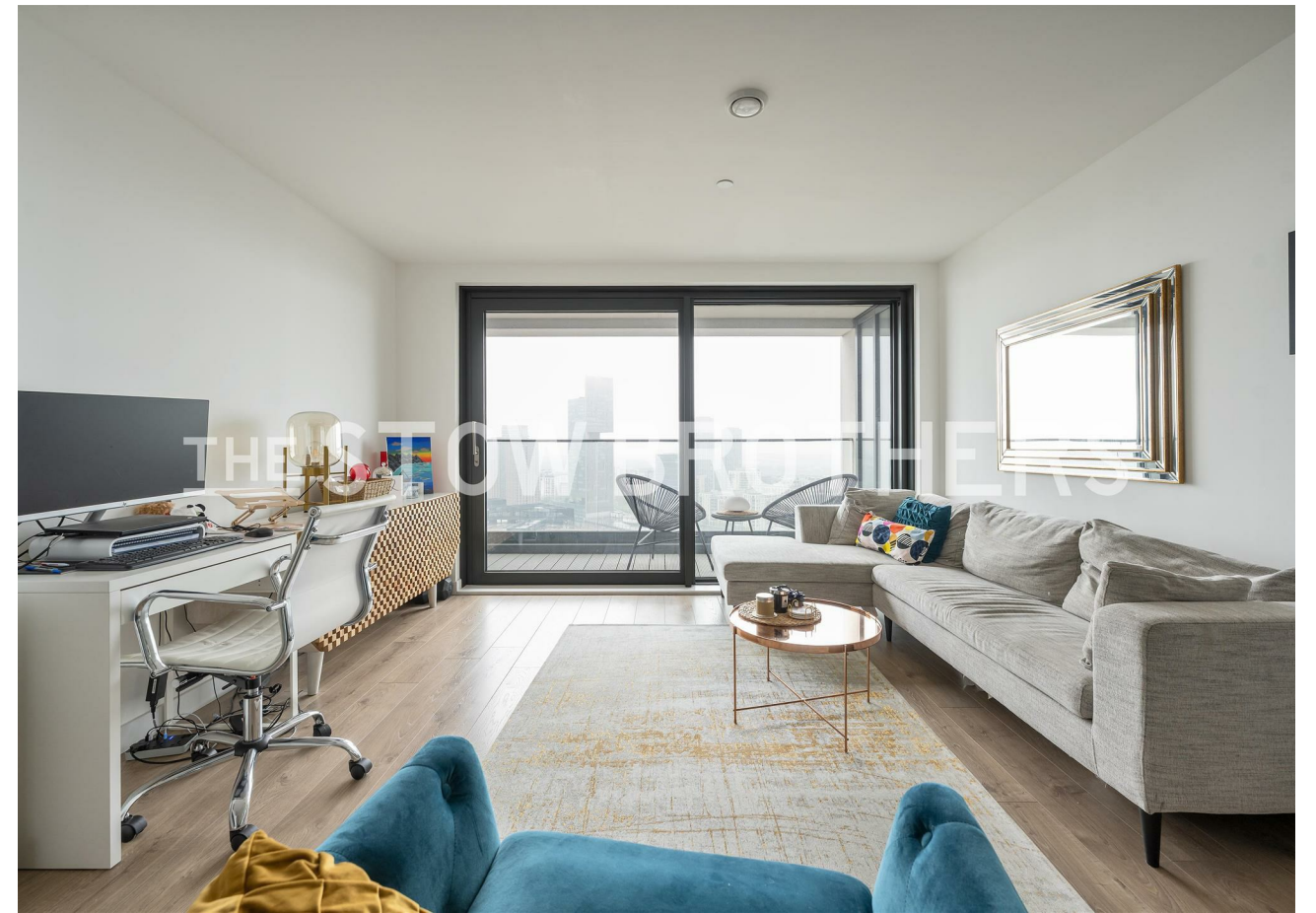
#### WHAT ELSE?

- The Queen Elizabeth Olympic Park, 560 acres of open greenery full of world class sporting facilities and legendary landmarks, is barely ten minutes away.
- There's some substantial extra storage in the hallway, always a welcome bonus in London apartment living.
- You're spoilt for choice when it comes to wining and dining spots, but if you're looking for something different take the twenty minute walk across the Olympic Park to Hackney's Fish Island and Barge East, for floating fine dining from Holland.

REQUEST A VIEWING  
0203 397 2222

FOLLOW US ➡ @STOWBROTHERS  
STOWBROTHERS.COM





REQUEST A VIEWING  
0203 397 2222

FOLLOW US ➡ @STOWBROTHERS  
STOWBROTHERS.COM





**Reception/Kitchen**

13'1" x 20'10"

**Bedroom**

10'1" x 18'0"

**Bathroom**

6'6" x 6'11"

**Storage**

**Balcony**

12'9" x 4'1"



REQUEST A VIEWING  
0203 397 2222

FOLLOW US ➡ @STOWBROTHERS  
STOWBROTHERS.COM