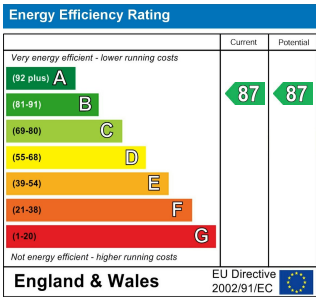
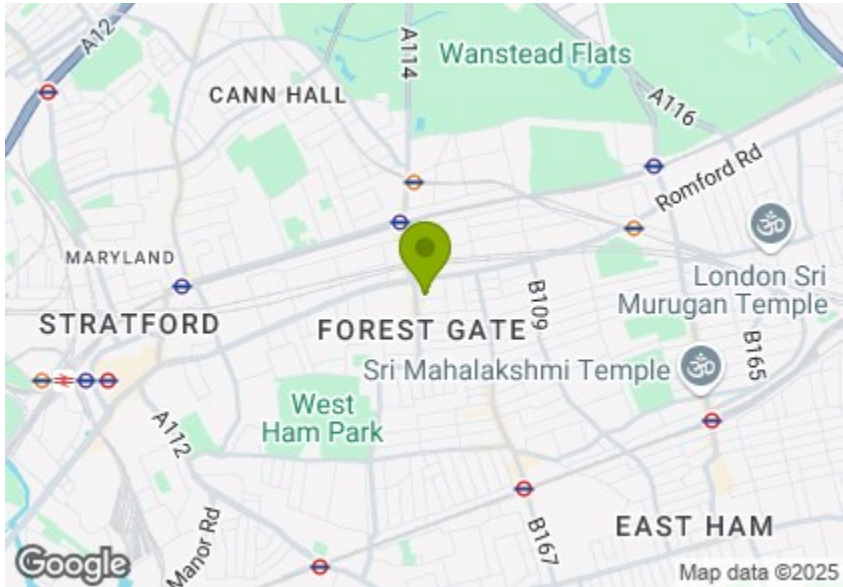




Total Area: 95.7 m² ... 1030 ft²  
All measurements are approximate and for display purposes only.



## VALE ROAD, FOREST GATE

Offers In Excess Of £555,000 Leasehold  
3 Bed House - Townhouse



### Features:

- Three Bedroom Townhouse
- High Specification
- Downstairs WC
- Front and Rear Terraces
- Double Height Ceilings
- Chain Free
- On Street Parking
- Four minutes walk to Forest Gate Station
- Seven minutes walk to Wanstead Park

A smart and stylish three bedroom townhouse situated in a modern development in the creative greenery of Forest Gate. Highly fitted out throughout, this home is artfully arranged with designer finishes and plenty of natural light.

Your new station, Forest Gate, offers Elizabeth Line services, swiftly bringing you to Liverpool Street in just under seventeen minutes.

REQUEST A VIEWING  
0203 397 2222

**E11, E7, E12 & E15**  
hello11@stowbrothers.com  
0203 397 2222

**E4 & N17**  
hello4@stowbrothers.com  
0203 369 6444

**E17 & E10**  
hello17@stowbrothers.com  
0203 397 9797

**E18 & IG8**  
hello18@stowbrothers.com  
0203 369 1818

**E8, E9, E5, N16, E3 & E2**  
hellohackney@stowbrothers.com  
0208 520 3077

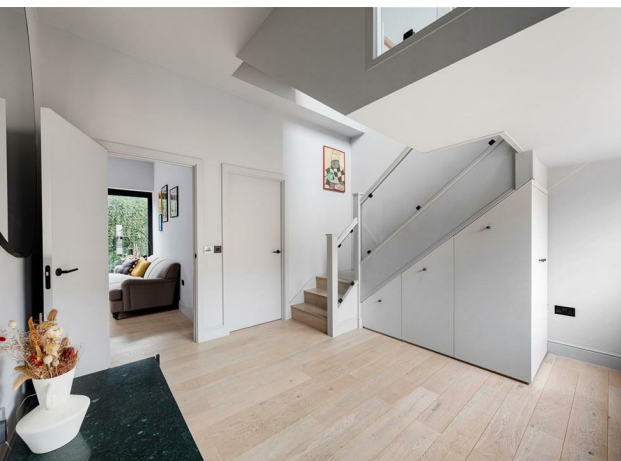
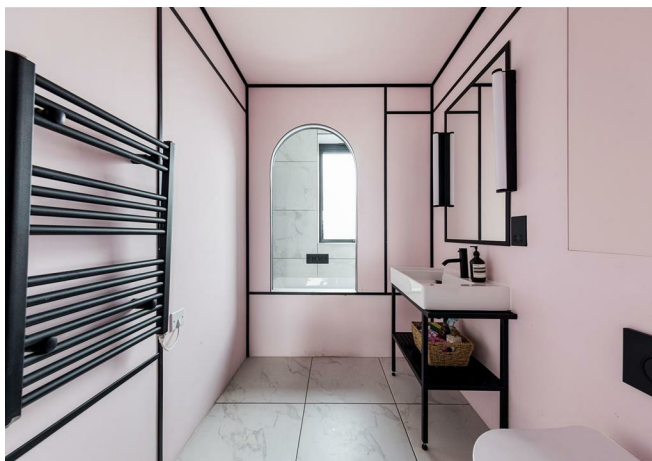
**New Homes**  
newhomes@stowbrothers.com  
0203 325 7227

**Investment & Development**  
id@stowbrothers.com  
0208 520 6220

**Property Maintenance**  
propertymanagement@stowbrothers.com  
0203 325 7228

STOWBROTHERS.COM  
@STOWBROTHERS





## IF YOU LIVED HERE...

Your front entrance welcomes you with 150 square feet of open, airy space, to the rear, the reception room and kitchen flow together in soft grey tones, enhanced by light oak floorboards and wide patio doors that bathe the room in natural light. Outside, you have a private patio area. The kitchen is elegantly appointed with ash toned cabinetry, quartz style worktops, integrated fridge freezer, and modern appliances. Next door, the first bedroom mirrors this sophisticated design. Also on the ground floor is a chic WC, featuring striking two toned red and black marble tiling that brings a bold Art Deco touch.

Once upstairs, the landing provides convenient storage space. On the first floor, you'll find two additional bedrooms, both designed with the same cohesive style. The front facing bedroom spans 110 square feet, overlooking the front of the home and featuring a generous floor to ceiling wardrobe. The second sleeper is filled with natural light from its large double windows. Adjacent is another Art Deco inspired bathroom, adorned in soft pastel pink with matte black hardware. A spacious tub with a rainfall shower overhead is framed by elegant quartz style tiles, adding

sophistication.

Forest Gate offers a friendly community amongst a wide expanse of nature. For a scrumptious brunch and coffee, head to Bloom Cafe x Pie Republic. Your new local, Forest Tavern, is just nine minutes away where a delicious roast and crisp pint await. For a warming curry, The Wanstead Kitchen is the place to be. If you're looking to get out into nature, the endless greenery of Wanstead Flats is just a seventeen minute walk away from your front door.

## WHAT ELSE?

- Young families will be pleased to know that Mini Bees Nursery Forest Gate, is just two minutes away from your home.
- Keep fit at E7 Movement, a wellness and workout with a wide variety of classes.
- Head to the Forest Gate Arches for even more options to enjoy local life, from Wild Goose Bakery to the Wanstead Tap.



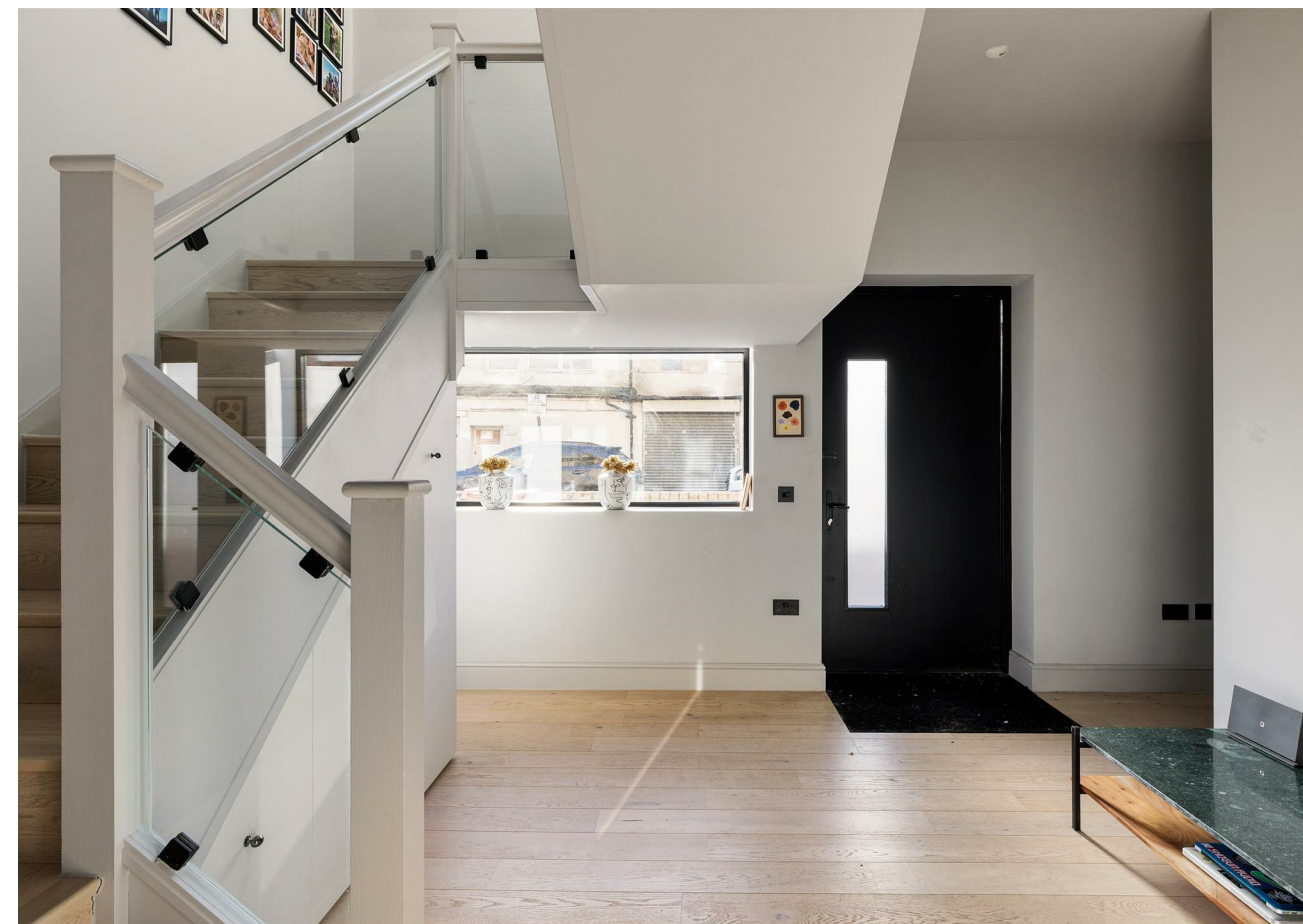
## A WORD FROM THE OWNER...

"We loved living in the property, there are great transport links including the Elizabeth line just 5 minutes walk from our property, there are a load of local pubs which all do great food including the Tavern. the Hollytree. There are also a few great deli's including Giovana's, cups and jars etc, Wanstead flats is also less than a 10 minute walk, you can get to Stratford in 5 minutes and local community are lovely."

REQUEST A VIEWING  
0203 397 2222

FOLLOW US ➡ @STOWBROTHERS  
STOWBROTHERS.COM





REQUEST A VIEWING  
0203 397 2222

FOLLOW US ➡ @STOWBROTHERS  
STOWBROTHERS.COM





**Kitchen / Reception Room**  
18'3" x 14'8"

**Bedroom**  
13'2" x 8'0"

**Bathroom**  
9'4" x 5'11"

**Entrance Hall**  
12'11" x 11'9"

**Bedroom**  
12'2" x 8'11"

**Patio**  
3'7" x 22'11"

**Bedroom**  
11'0" x 9'4"

**WC**



REQUEST A VIEWING  
0203 397 2222

FOLLOW US ➡ @STOWBROTHERS  
STOWBROTHERS.COM