



EDLIN & JARVIS
ESTATE AGENTS



Balderton House, East Wing, Main Street

Balderton, NG24 3NN

£475,000



Balderton House, East Wing

Balderton, NG24 3NN

*****STEP INTO TIMELESS ELEGANCE***** A Georgian Gem in Balderton's Heart
Discover a rare sanctuary where history whispers and modern luxury unfolds. This is the East Wing within Balderton House, a meticulously restored 1830 Georgian residence, invites you to experience a life of refined comfort within the coveted conservation area of Balderton's Main Street. This is not just a home; it's a legacy, where soaring ceilings and elegant sash windows frame the beauty of a bygone era, thoughtfully preserved since its 2017 transformation.

Imagine entertaining in the breathtaking, open-plan living kitchen – a sprawling, sun-drenched space extending over 31 feet, flowing seamlessly into a dedicated dining area. Here, culinary artistry meets convivial gatherings, creating memories that linger long after the evening ends.

Four generously proportioned bedrooms, including two luxurious ensembles, offer a peaceful retreat for every member of the family or cherished guests. Each space is designed with comfort and elegance in mind, ensuring a haven of tranquillity.

Beneath the surface lies practical elegance: a spacious cellar, a convenient downstairs WC, and ample storage, all complemented by the warmth of gas central heating.

Step outside into your private oasis: an enclosed garden, a verdant canvas of lush lawn and vibrant shrubs. A paved seating area beckons for sun-drenched breakfasts and starlit barbecues. To the front, a substantial tarmacadam driveway welcomes multiple vehicles, ensuring effortless arrivals.

Balderton, a village steeped in charm, offers a vibrant community spirit alongside the convenience of modern amenities. Stroll to Tesco, the post office, or a welcoming local pub. Explore the historic beauty of St. Giles Church and the surrounding countryside, perfect for leisurely walks and outdoor adventures. Commuting is a breeze with easy access to the A1, A46, A52, and A17, connecting you to Newark's bustling market town, as well as the vibrant cities of Nottingham, Lincoln, and Leicester. For those seeking the allure of London, the East Coast Mainline whisks you to King's Cross in just 1 hour and 15 minutes. This is more than a property; it's an invitation to embrace a lifestyle of unparalleled elegance and tranquillity. The East wing of Balderton House is a rare treasure, a harmonious blend of historical grandeur and contemporary living, waiting to be cherished. Don't miss the opportunity to make this extraordinary residence your own.

Entrance Hall

Open Plan Living Kitchen
16'0" x 31'5" (4.88m x 9.58m)





Dining Room
16'0 x 16'5 (4.88m x 5.00m)

WC
12'4 x 3'1 (3.76m x 0.94m)

Store Room
7'3 x 3'1 (2.21m x 0.94m)
The Store room has plumbing ready for a washer/dryer

Inner Hall
13'3 x 4'1 (4.04m x 1.24m)

Landing

Bedroom One
15'11 x 18'0 (4.85m x 5.49m)

Ensuite
8'7 x 3'3 (2.62m x 0.99m)

Bedroom Two
16'2 x 16'0 (4.93m x 4.88m)

Ensuite
8'11 x 3'4 (2.72m x 1.02m)

Bedroom Three
9'1 x 12'9 (2.77m x 3.89m)

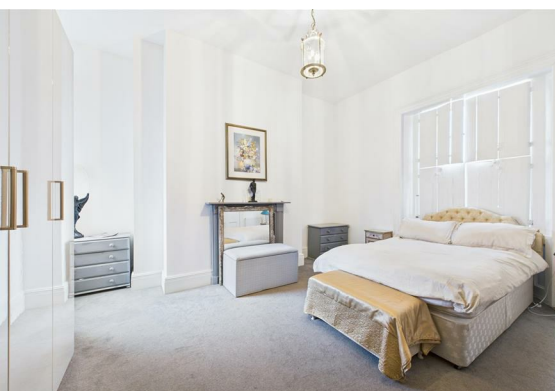
Bedroom Four
11'10 x 6'3 (3.61m x 1.91m)

Bathroom
11'7 x 5'8 (3.53m x 1.73m)

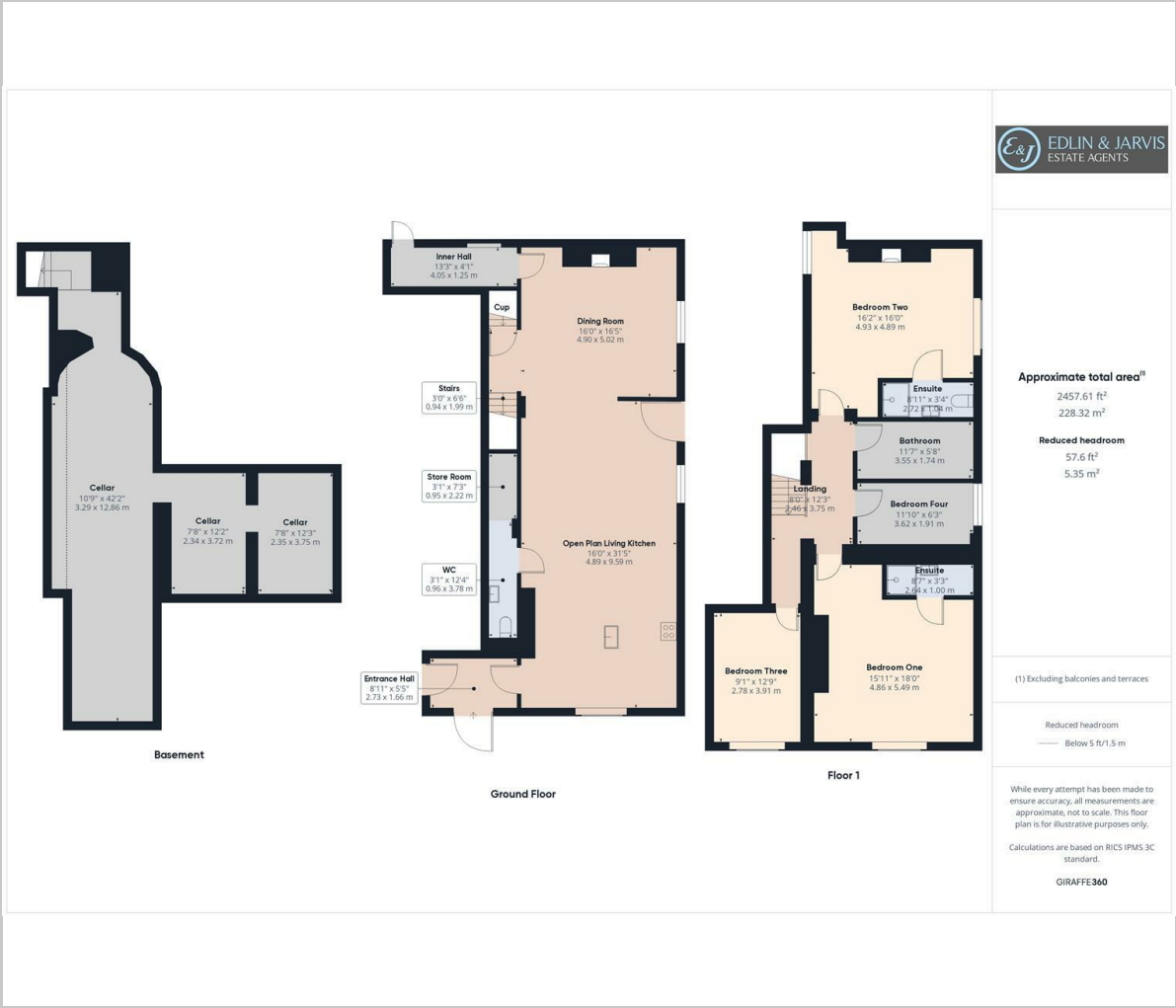
Cellar One
10'9 x 42'2 (3.28m x 12.85m)
max measurements

Cellar Two
7'8 x 12'2 (2.34m x 3.71m)

Cellar Three
7'8 x 12'3 (2.34m x 3.73m)



Floor Plan



Viewing

Please contact our Sales Office on 01636 555043 if you wish to arrange a viewing appointment for this property or require further information.

These particulars, whilst believed to be accurate are set out as a general outline only for guidance and do not constitute any part of an offer or contract. Intending purchasers should not rely on them as statements of representation of fact, but must satisfy themselves by inspection or otherwise as to their accuracy. No person in this firms employment has the authority to make or give any representation or warranty in respect of the property.

36 Middle Gate, Newark, NG24 1AL
Tel: 01636 555043 Email: enquiries@edlinandjarvis.co.uk <https://www.edlinandjarvis.co.uk/>

Area Map



Energy Efficiency Graph

