



- A mature semi-detached home occupying a large corner plot
- Lounge with window overlooking front garden
- Feature kitchen dinning room, sun room/study and shower room
- Fourth bedroom or study with window to rear
- Three bedrooms and family bathroom, gas central heating
- Extensive private drive and large, fully enclosed south facing garden



"A mature semi-detached house occupying a surprisingly large, corner plot and offering flexible accommodation and ample parking".

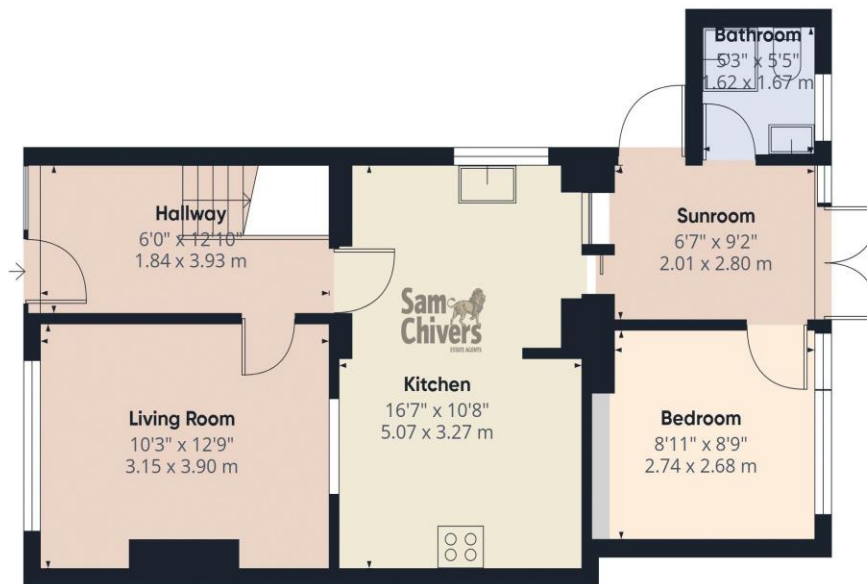
The accommodation comprises, on the ground floor an entrance hallway, lounge to front, feature kitchen dining room, sunroom / study with door onto the rear garden, bedroom or study overlooking the rear garden, shower room with w.c. On the first floor there are three good sized bedrooms and a family bathroom with shower over bath. Gas central heating and double glazing.

Outside to front is an expansive level lawn and private drive leading to the side of the property to a garage. Gated access into a large and level south facing garden with patio and lawn.

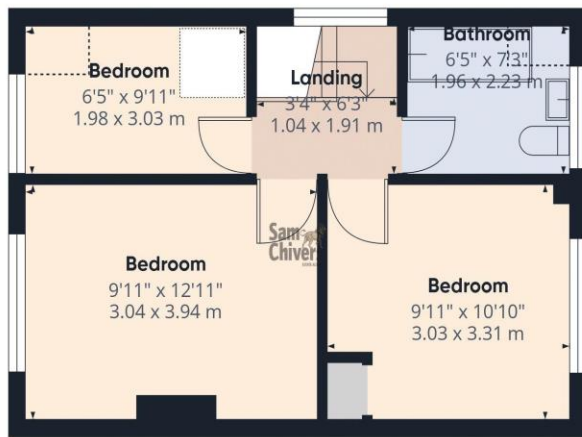
Tenure: Freehold.

Council Tax Band: C.





Floor 0 Building 1



Floor 1 Building 1



Floor 0 Building 2

Approximate total area⁽¹⁾

1069 ft²

99.4 m²

Reduced headroom

10 ft²

0.9 m²

(1) Excluding balconies and terraces

Reduced headroom

Below 5 ft/1.5 m

Calculations reference the RICS IPMS 3C standard. Measurements are approximate and not to scale. This floor plan is intended for illustration only.

GIRAFFE360

Find us online!



www.samchiversproperty.co.uk



Facebook: Sam Chivers Estate Agents



Instagram: @samchiversestateagents

rightmove  Zoopla

Sam Chivers Estate Agents can also provide mortgage and conveyancing recommendations should you require such a service. Please contact our office on:

01761 411020 or email us at sales@samchiversproperty.co.uk

These sales particulars provide an approximate guide and form no part of a contract. It is the purchaser's responsibility to satisfy themselves that the property has been accurately described and that all fixtures and apparatus are functioning correctly. Your home may be at risk if you do not keep up repayments secured against it.