



- A semi-detached village property with a pleasant rural aspect
- Entrance hallway, cloakroom, lounge to front with cosmetic fireplace
- Feature kitchen dining room with ample space for table and patio doors to garden
- Separate utility room (currently used as a therapy room also)
- Four bedrooms, ensuite and family bathroom, gas central heating
- Private drive to garage and large fully enclosed garden to rear



"A smart four-bedroom semi-detached village home with a sunny rural view, easy access to open countryside and Greyfield Woods".

The accommodation comprises an entrance hallway with cloakroom and understair storage area. The lounge is situated to the front with a cosmetic fireplace. The kitchen dining room spans the full width of the house and overlooks the rear garden, there are a good range of fitted units and ample space for a dining table. Further on the ground floor and separate to the house is a utility room located to the rear of the garage with door into the remaining garage space which provides secure storage. On the first floor are four bedrooms, the principal bedroom enjoys an ensuite shower room and there is a family bathroom.

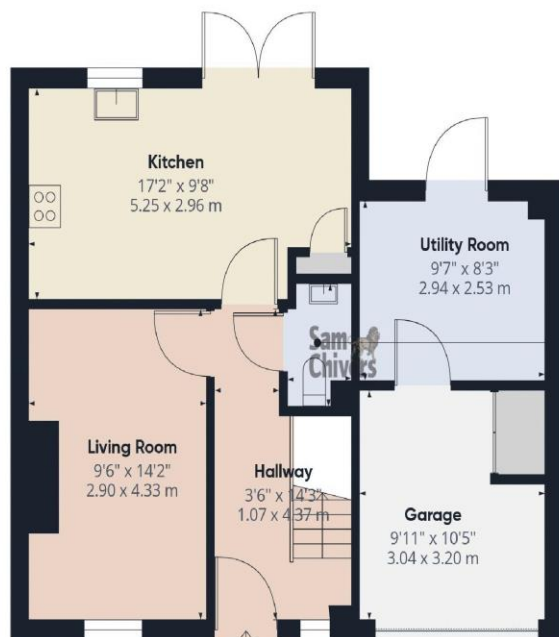
Gas central heating and double glazing.

Outside to front is a double width private drive, lawn garden and access to the garage. To the rear is a fully enclosed garden with gazebo covered patio and pathway leading to an expansive artificial lawn and decked patio.

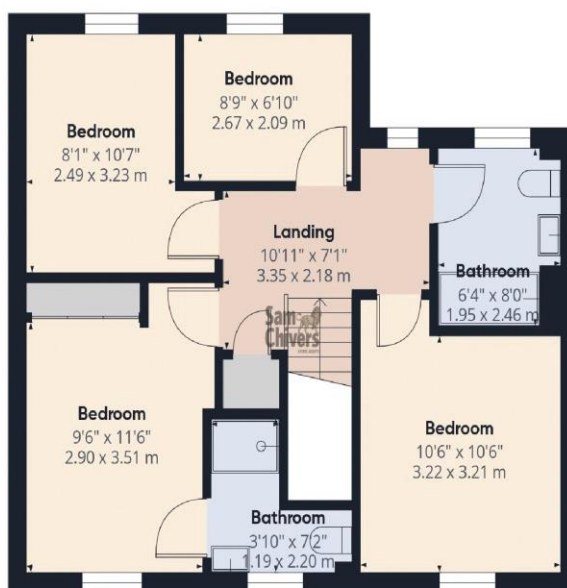
**Tenure:** Freehold. **Council Tax Band:** D







**WC**  
3'3" x 5'8"  
1.00 x 1.73 m



**Approximate total area<sup>(1)</sup>**  
1155 ft<sup>2</sup>  
107.3 m<sup>2</sup>

(1) Excluding balconies and terraces

Calculations reference the RICS IPMS 3C standard. Measurements are approximate and not to scale. This floor plan is intended for illustration only.

GIRAFFE360

Find us online!



[www.samchiversproperty.co.uk](http://www.samchiversproperty.co.uk)



Facebook: Sam Chivers Estate Agents



Instagram: @samchiversestateagents

**rightmove**  **Zoopla**

Score	Energy rating	Current	Potential
92+	A		93 A
81-91	B	83 B	
69-80	C		
55-68	D		
39-54	E		
21-38	F		
1-20	G		

Sam Chivers Estate Agents can also provide mortgage and conveyancing recommendations should you require such a service. Please contact our office on:

01761 411020 or email us at [sales@samchiversproperty.co.uk](mailto:sales@samchiversproperty.co.uk)

These sales particulars provide an approximate guide and form no part of a contract. It is the purchaser's responsibility to satisfy themselves that the property has been accurately described and that all fixtures and apparatus are functioning correctly. Your home may be at risk if you do not keep up repayments secured against it.