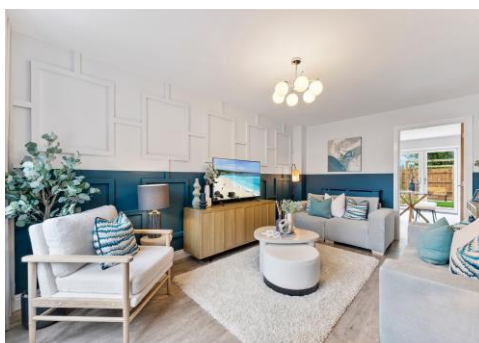




- The Cherry, a brand-new semi-detached property ready mid 2025
- Entrance hallway leading in lounge with aspect to front
- Feature luxury fitted kitchen dining room opening onto garden
- Three bedrooms, ensuite shower room and family bathroom
- Fully enclosed south facing garden
- Private allocated parking for two cars



"The Cherry, a brand-new semi-detached house with a luxury fitted feature kitchen dining room which patio doors opening onto a south facing rear garden".

The accommodation comprises entrance hallway with door opening into the lounge. The lounge is situated to the front with television, telephone and cat 6 data point. Kitchen dining room with an attractive range of fitted units, laminate worktops with matching upstand, fitted electric oven and hob with extractor over, patio doors opening onto the garden. On the first floor are three bedrooms, the main bedroom enjoys an ensuite shower and the family bathroom benefits from a shower over bath.

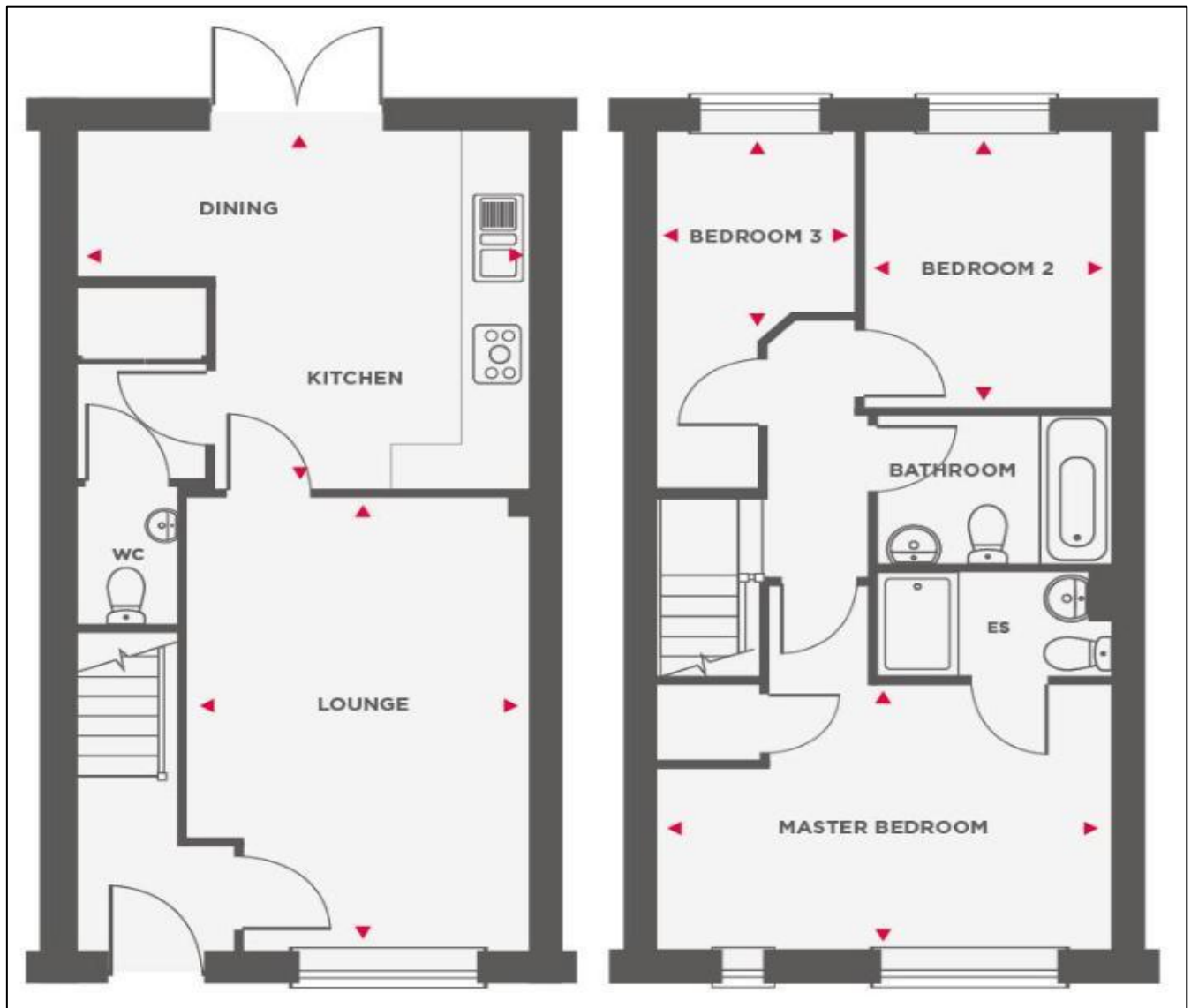
Air source heat pump central heating with pressure fed hot water system and PV solar panels to the roof. Electric vehicle charging point. Private allocated parking for two cars. Fully enclosed garden to rear.

AGENTS NOTE: The estimated build completion date for this property is late June / early July 2025. All photography is for illustrative purposes only.

**Tenure:** Freehold. **Council Tax Band:** to be confirmed.







Find us online!



[www.samchiversproperty.co.uk](http://www.samchiversproperty.co.uk)



Facebook: Sam Chivers Estate Agents



Instagram: @samchiversestateagents

**rightmove**  **Zoopla**

Sam Chivers Estate Agents can also provide mortgage and conveyancing recommendations should you require such a service. Please contact our office on:

01761 411020 or email us at [sales@samchiversproperty.co.uk](mailto:sales@samchiversproperty.co.uk)

These sales particulars provide an approximate guide and form no part of a contract. It is the purchaser's responsibility to satisfy themselves that the property has been accurately described and that all fixtures and apparatus are functioning correctly. Your home may be at risk if you do not keep up repayments secured against it.