



- A detached bungalow which occupies a substantial plot with views
- Exceptionally large, mature, landscaped garden arranged over four levels
- Lounge dining room with patio doors onto garden
- Kitchen providing a good range of units, enjoying pleasant views
- Four bedrooms, main bedroom with ensuite bathroom, family shower room



"A detached bungalow situated in a quiet, tucked away position, which appreciates far reaching views across the town and boasts a large, landscaped garden backing onto mature woodland".

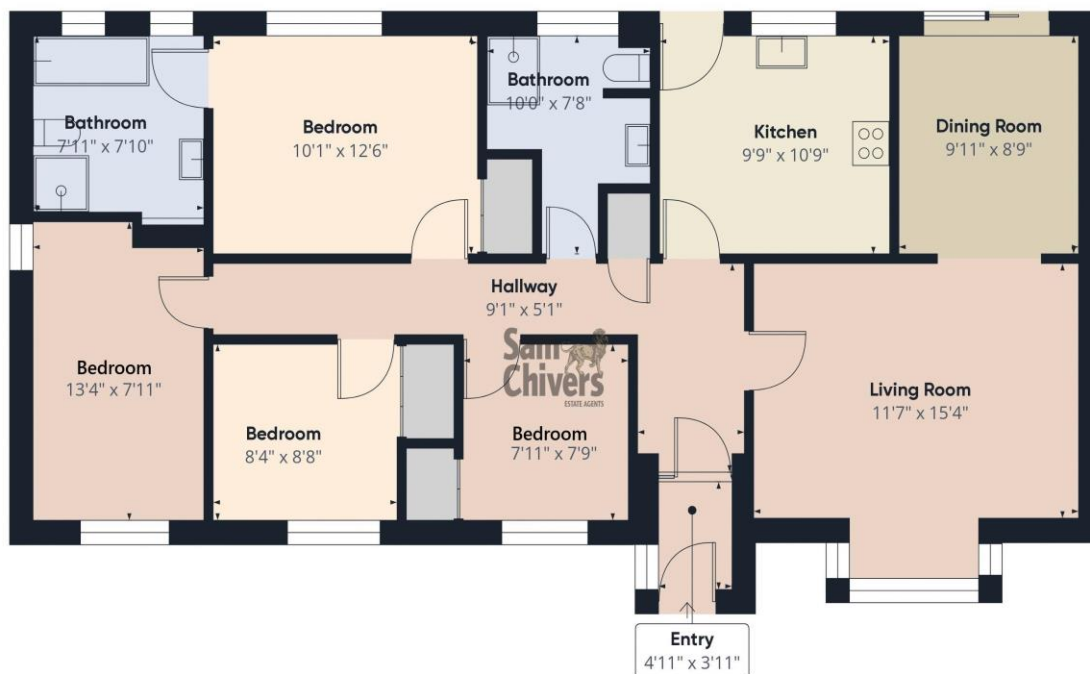
The accommodation comprises a central entrance hallway with doors feeding all rooms. There is an L shaped lounge dining room with window to front and patio door overlooking the garden to rear. The kitchen provides a good range of units and has a door and window opening onto the rear garden, pleasant views. There are four bedrooms, the main bedroom enjoys a large ensuite bathroom and further to this there is a family shower room.

The property benefits from mains gas central heating and double glazing.

Externally the property is approached via a private drive which leads to a detached garage, parking for two to three cars. A gated pathway leads to an exceptional landscaped, gradient garden to rear which is arranged over four levels and consists of patio areas, ornamental garden pond with waterfall, stocked with mature carp. Expansive lawns with flower and shrubbed borders. Gravelled area with glazed green house and garden shed.

Tenure: Freehold. **Council Tax Band:** E.





Floor 0 Building 1



Floor 0 Building 2

Approximate total area⁽¹⁾
1226.33 ft²

(1) Excluding balconies and terraces

While every attempt has been made to ensure accuracy, all measurements are approximate, not to scale. This floor plan is for illustrative purposes only.

Calculations are based on RICS IPMS 3C standard.

GIRAFFE360

Find us online!



www.samchiversproperty.co.uk



Facebook: Sam Chivers Estate Agents



Instagram: @samchiversestateagents

rightmove  Zoopla

Sam Chivers Estate Agents can also provide mortgage and conveyancing recommendations should you require such a service. Please contact our office on:

01761 411020 or email us at sales@samchiversproperty.co.uk

These sales particulars provide an approximate guide and form no part of a contract. It is the purchaser's responsibility to satisfy themselves that the property has been accurately described and that all fixtures and apparatus are functioning correctly. Your home may be at risk if you do not keep up repayments secured against it.