



- An exceptional detached natural stone house occupying a large rural plot with views
- Fully renovated inside and out, this property is sure to tick many boxes
- Spacious lounge with valley views and feature kitchen dining room with bi-fold doors
- Four bedrooms, master ensuite bathroom and family bathroom
- The overall plot measure approx. 0.3 acres with a sunny private aspect
- Large double garage, approx. 400 square foot workshop and extensive private drive



"A fully renovated natural stone detached house with double garage and large timber workshop, occupying an extensive plot of approx. 0.3 acres".

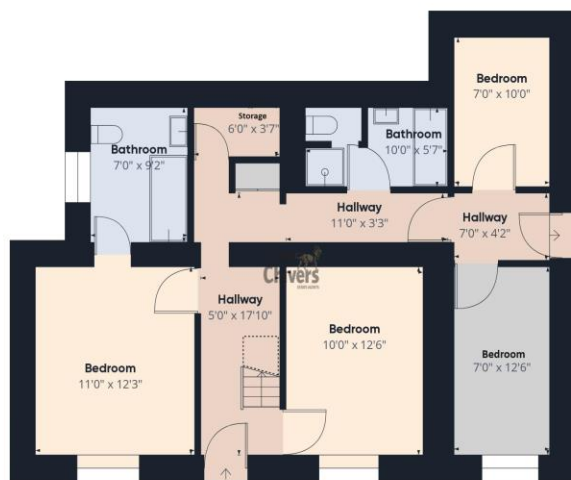
The accommodation, which is arranged over two floors, provides on the ground floor, four bedrooms, the master bedroom boasts an ensuite bathroom. There is also a family bathroom with bath and separate shower. On the first floor is a spacious lounge with valley views and to the rear a feature kitchen dining room with a dual rural aspect and bi-fold doors opening onto an extremely private west facing decked patio. Separate utility room which houses the LPG gas boiler, providing domestic hot water and central heating to radiators, w.c. Full double glazing.

From the patio are timber steps lead to an extensive, level lawn garden which adjoins open fields and enjoys far reaching sunny views. From the lawn garden there is direct access to the private gated drive, a large double garage with power and lighting and approx. 400 square foot timber workshop with central heating, kitchenette and w.c. The driveway allows secure parking for several vehicles and more if required.

**Tenure:** Freehold. **Council Tax Band:** D







Floor 0 Building 1



Floor 1 Building 1



Floor 0 Building 2



Floor 0 Building 3

Approximate total area<sup>(1)</sup>

2061.93 ft<sup>2</sup>

Reduced headroom

10.98 ft<sup>2</sup>

(1) Excluding balconies and terraces

[ ] Reduced headroom  
(below 1.5m/4.92ft)

While every attempt has been made to ensure accuracy, all measurements are approximate, not to scale. This floor plan is for illustrative purposes only.

GIRAFFE360

Find us online!



[www.samchiversproperty.co.uk](http://www.samchiversproperty.co.uk)



Facebook: Sam Chivers Estate Agents



Instagram: @samchiversestateagents

rightmove  Zoopla

Score	Energy rating	Current	Potential
92+	A		
81-91	B		87 B
69-80	C		
55-68	D	58 D	
39-54	E		
21-38	F		
1-20	G		

Sam Chivers Estate Agents can also provide mortgage and conveyancing recommendations should you require such a service. Please contact our office on:

01761 411020 or email us at [sales@samchiversproperty.co.uk](mailto:sales@samchiversproperty.co.uk)

These sales particulars provide an approximate guide and form no part of a contract. It is the purchaser's responsibility to satisfy themselves that the property has been accurately described and that all fixtures and apparatus are functioning correctly. Your home may be at risk if you do not keep up repayments secured against it.