



- An attractive and brand new bay fronted detached house
- Central entrance hallway, cloakroom and study
- Lounge with doors opening into a dining room
- Fitted kitchen with integrated appliances
- Four bedrooms, ensuite and family bathroom
- Private side drive leading to garage

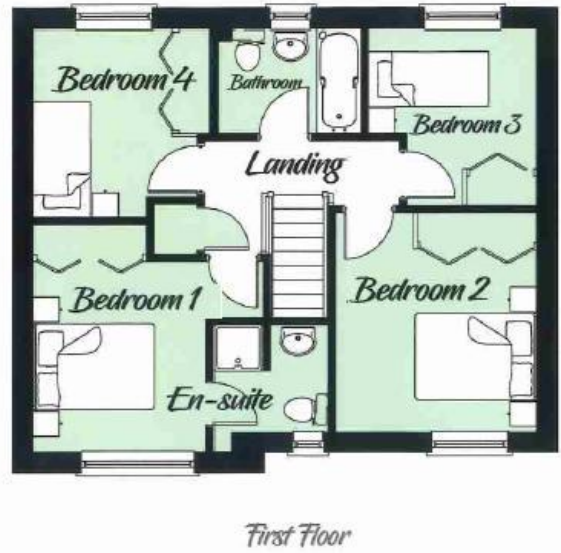
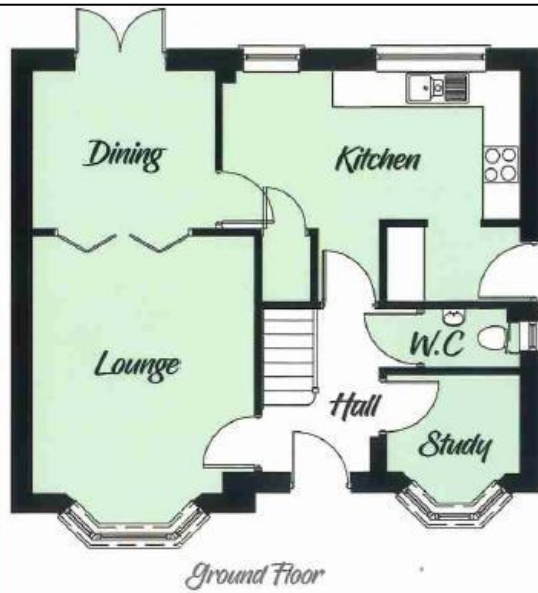


"An attractive, bay front four-bedroom detached house situated on the edge of a brand new development with leafy valley views".

The accommodation comprises a central entrance hallway, cloakroom, study, lounge, dining room and kitchen. On the first floor are four bedrooms, ensuite and family bathroom. The property benefits from gas central heating and full double glazing.

Private side driveway leading to a garage. Fully enclosed rear garden.

Tenure: Freehold



Bedroom 1

Measurements

Lounge	4.2m x 3.6m	13' 8" x 11' 8"	Bedroom 1	3.6m x 3.2m	11' 8" x 10' 5"
Dining	3m x 2.6m	9' 8" x 8' 5"	Bedroom 2	3.7m x 2.7m	12' 1" x 8' 9"
Kitchen	4.8m x 2.5m	15' 7" x 8' 2"	Bedroom 3	2.9m x 2.6m	9' 5" x 8' 5"
Study	2.2m x 1.6m	7' 2" x 5' 2"	Bedroom 4	3.1m x 2.6m	10' 2" x 8' 5"

Find us online!



www.samchiversproperty.co.uk



Facebook: Sam Chivers Estate Agents