



- A mature mid-terrace family home which enjoys far reaching valley views
- Lounge with patio doors opening onto a private garden with views
- Kitchen dining room to front, cloakroom and handy storage cupboards
- Three very good size bedrooms and family bathroom with shower over bath
- Fully enclosed rear garden adjoining open fields
- Offered for sale with no onward chain!



"A mature three-bedroom family home with far reaching valley views".

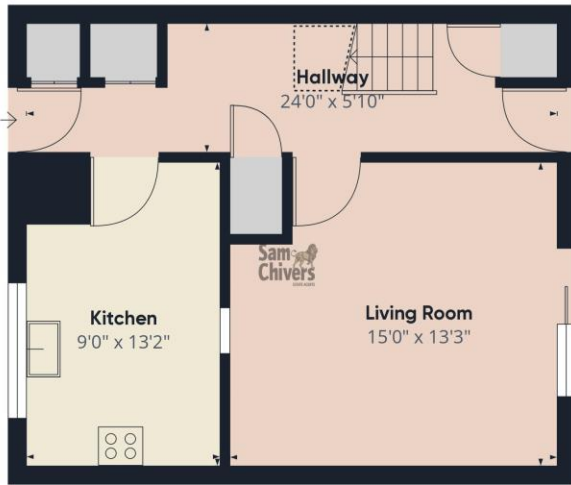
The accommodation comprises entrance porch leading into an entrance hallway with cloakroom storage cupboards and door onto the rear garden. A kitchen dining room is situated to the front with a range of units and serving hatch into the lounge. Lounge with patio doors opening onto the garden and views across the somer valley. On the first floor are three very good-sized bedrooms and a family bathroom with shower over bath. Electric night storage heating and double glazing. Outside to front is a stepped path leading to the front door and a gravelled terrace garden. To the rear is a fully enclosed and private garden which adjoins open fields.

The property is offered for sale with no onward chain.

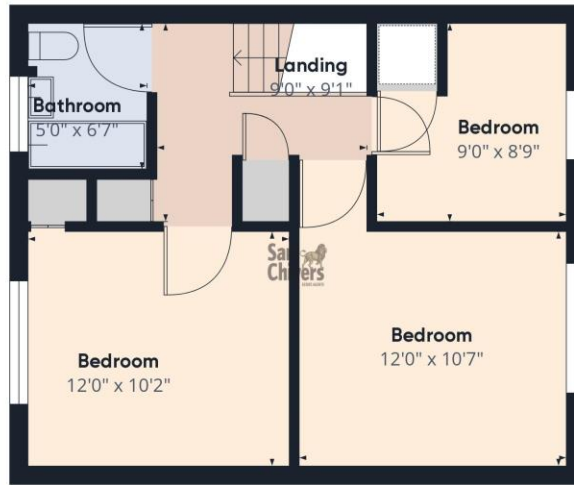
Tenure: Freehold.

Council Tax Band: B.





Floor 0



Floor 1

Approximate total area⁽¹⁾
860.14 ft²
Reduced headroom
15.07 ft²

(1) Excluding balconies and terraces

Reduced headroom
(below 1.5m/4.92ft)

While every attempt has been made to ensure accuracy, all measurements are approximate, not to scale. This floor plan is for illustrative purposes only.

GIRAFFE360

Find us online!



www.samchiversproperty.co.uk



Facebook: Sam Chivers Estate Agents



Instagram: @samchiversestateagents

rightmove  Zoopla

Sam Chivers Estate Agents can also provide mortgage and conveyancing recommendations should you require such a service. Please contact our office on:

01761 411020 or email us at sales@samchiversproperty.co.uk

These sales particulars provide an approximate guide and form no part of a contract. It is the purchaser's responsibility to satisfy themselves that the property has been accurately described and that all fixtures and apparatus are functioning correctly. Your home may be at risk if you do not keep up repayments secured against it.