



- A well presented link detached family home
- Stylish feature kitchen/dining room
- Main bedroom with en suite shower room
- Low maintenance level garden
- Garage and driveway parking alongside the property
- Pleasant location on the outskirts of town

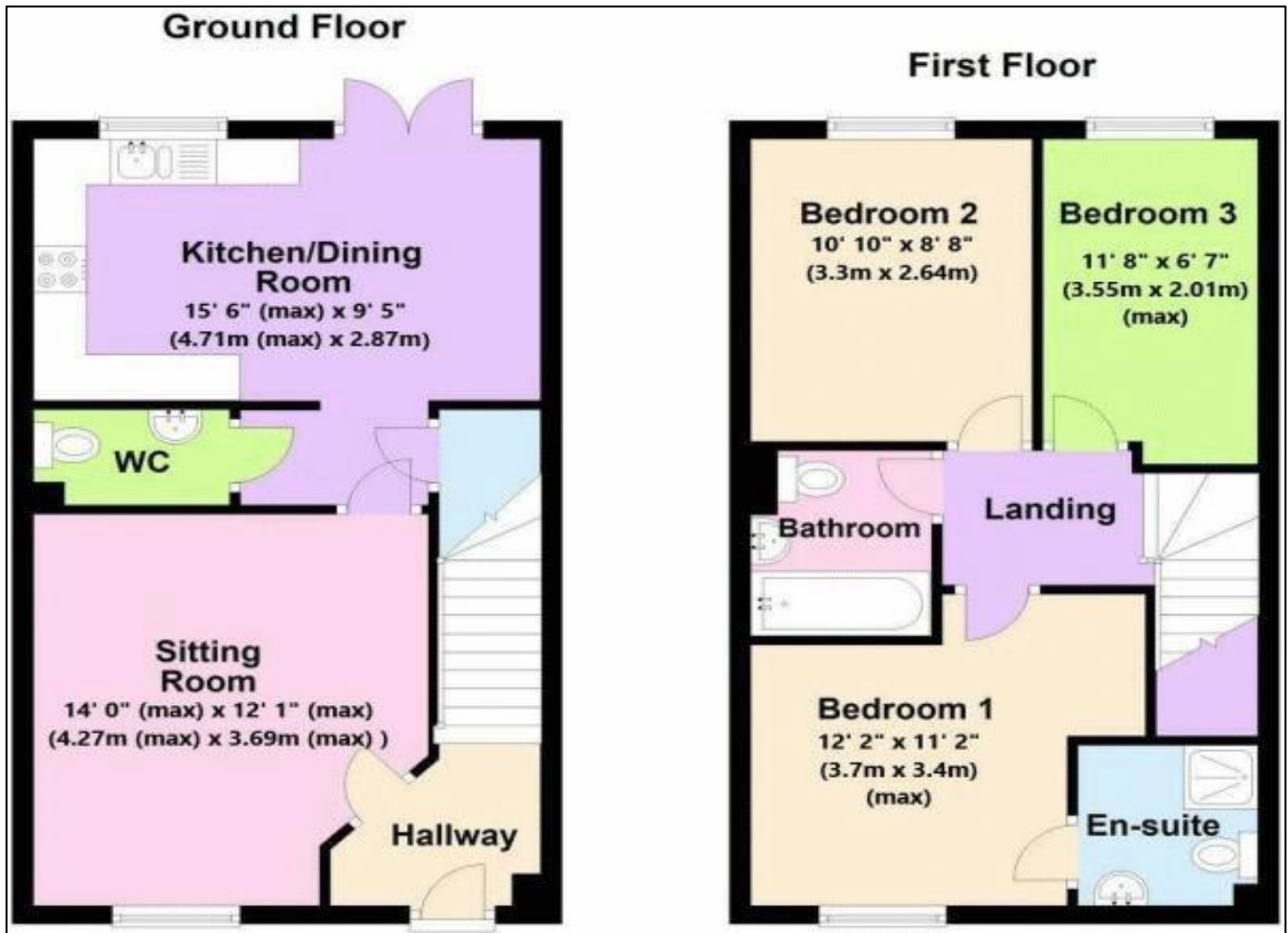


'A modern link detached home still presented in excellent order throughout and with a low maintenance, sunny level garden!' Located in a small residential cul-de-sac forming part of this well regarded Taylor Wimpey development on the fringe of Midsomer Norton, this three bedroom link detached home is still in excellent condition and could be moved into with little or no fuss! The property itself has a welcoming entrance hall with stairs to the first floor and a doorway through to a nicely presented lounge. The kitchen/dining room is the real feature with tasteful modern units and work surface space, dining area and French doors to the garden. There is also a handy ground floor wc. On the first floor there are three pleasant sized bedrooms with an en suite shower room accessed from the largest bedroom. Also on the first floor is a family bathroom. GCH and double glazing. The property enjoys gas central heating and double glazing. Externally the property has a garden that enjoys plenty of afternoon sun and has been landscaped with an extended patio area and artificial turf for ease of maintenance. The property also has a single garage and driveway parking alongside the property plus a EV charging point. AGENTS NOTE: The property is Freehold however does have a development charge of £180 payable to Remus for 2024 towards development maintenance and upkeep. Fisher Close forms part of the Taylor Wimpey Homes built development, located along Monger Lane and is therefore nicely positioned on the fringe of the town and has easy access to open fields and countryside. A large supermarket is within easy reach and the town centre and schools are within approximately 15 minutes walk.

Tenure: Freehold

Council Tax Band: D





Find us online!



www.samchiversproperty.co.uk



Facebook: Sam Chivers Estate Agents



Instagram: @samchiversestateagents

rightmove Zoopla

Score	Energy rating	Current	Potential
92+	A		95 A
81-91	B	83 B	
69-80	C		
55-68	D		
39-54	E		
21-38	F		
1-20	G		

Sam Chivers Estate Agents can also provide mortgage and conveyancing recommendations should you require such a service. Please contact our office on:

01761 411020 or email us at sales@samchiversproperty.co.uk

These sales particulars provide an approximate guide and form no part of a contract. It is the purchaser's responsibility to satisfy themselves that the property has been accurately described and that all fixtures and apparatus are functioning correctly. Your home may be at risk if you do not keep up repayments secured against it.