



Keable Homes Ltd
Sales & Lettings

Deavall Way

Heath Hayes, Cannock, WS11 7ZB

- Lounge
- Kitchen
- 2 Bedrooms
- Bathroom with Shower

Asking Price Of £160,000

EPC Rating '57'





Property Description

Keable Homes Ltd are delighted to bring to the market this well presented, two bedroom end of terrace property in Heath Hayes. Offered for sale with no onward chain, the house is in need of some updating, but is in good condition to be moved straight into. There is gas in the property ready for central heating, but it is currently heated by electric storage heaters.

The property sits within a short walk from the new McArthur Glenn Designer Outlet, and has good schools and all local amenities close by, as well as excellent road and public transport links. There is parking for two cars, a front garden and rear garden externally. To the ground floor is an entrance hallway, kitchen and living room, and to the first floor there are two good sized bedrooms and a family bathroom.



APPROACHED VIA -

a tarmacadam driveway to the side with a paved pathway to the UPVC double glazed front door. There is a lawned front garden with mature hedging to the front.

HALLWAY

(2.85m x 1.09m) - with laminated flooring, a ceiling light point, electrical fuse board and an electric storage heater. Doors lead into the living room and the kitchen.

KITCHEN

(2.85m x 2.36m) - with a range of wall and base units with laminated work surface over. There is a sink and a half with mixer tap over and drainer, and space for a washing machine, cooker and further appliance. The UPVC double glazed window overlooks the front of the property, the flooring is laminated, there is a tiled splash back, ceiling light point and an electric storage heater.



LOUNGE DINER

(5.09m x 3.55m) - a spacious and light room with laminate flooring, a ceiling light point, UPVC double glazed sliding doors opening onto the rear garden, a feature fire surround with gas fire and an electric storage heater. The stairs lead up to the first floor.

TO THE FIRST FLOOR -

LANDING -

with carpeted flooring, a ceiling light point and access to both bedrooms and the family bathroom.

BEDROOM ONE

(3.55m x 2.85m) - a double bedroom with two UPVC double glazed windows overlooking the front, a built in wardrobe over the stairs, ceiling light point and an electric storage heater.



BEDROOM TWO

(2.99m x 3.52m) - a small double room with a built in four door wardrobe, carpeted flooring, a ceiling light point and a UPVC double glazed window overlooking the rear.





BATHROOM

(1.50m x 2.61m) - with a modern white suite comprising of a panelled bath with electric shower over, pedestal hand wash basin and low level WC. The flooring is vinyl with panelling to the walls. There is a UPVC double glazed window overlooking the side, a ceiling light point and a wall mounted electric fan heater. There is a large over stairs storage cupboard housing the hot water cylinder.

TO THE REAR -

the garden is fully enclosed with fencing with access through to the front of the property via the driveway. There is a patio area with the majority of the garden laid to lawn with a wooden shed and mature shrubs.

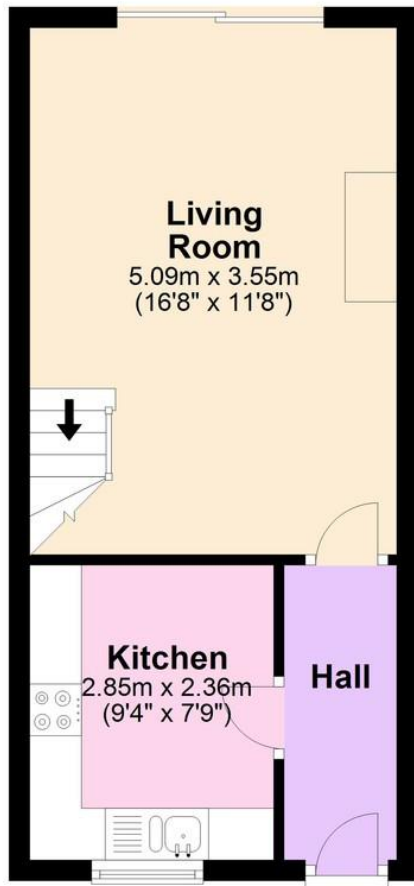
PLEASE NOTE:

all measurements are approximate and intended as a guide only. Any prospective purchaser should satisfy themselves of their accuracy.

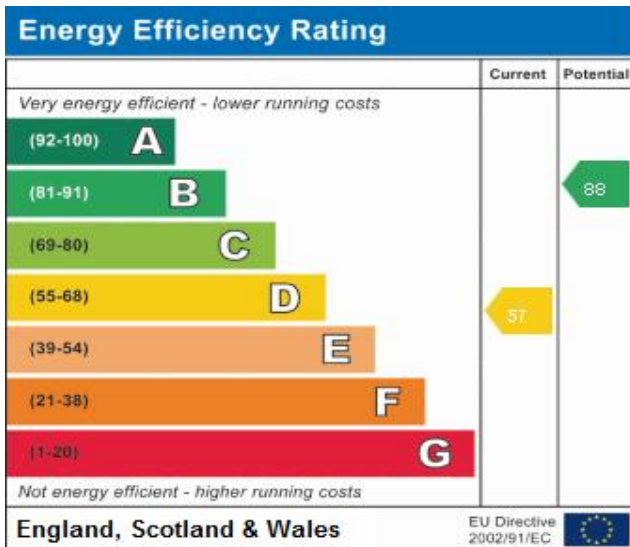
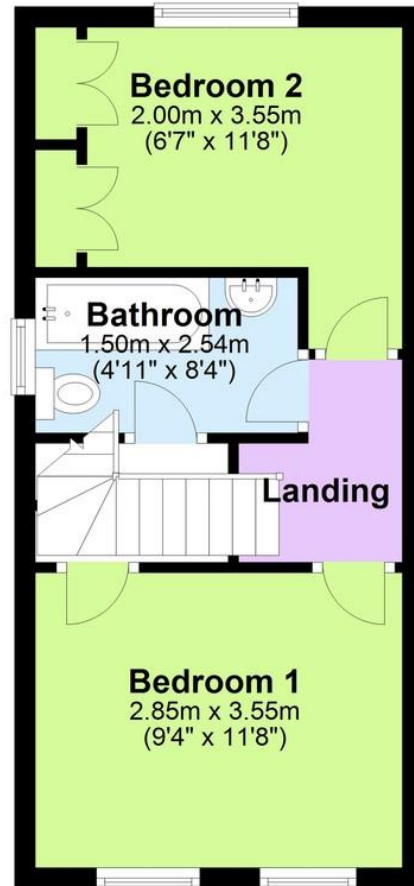
We have been informed the property is FREEHOLD. We have not seen evidence of this, and your conveyancing professional will confirm this for you.

All viewings strictly by appointment only via the agents, Keable Homes Ltd.

Ground Floor



First Floor



Suite 1
214 Watling Street
Bridgtown
Cannock

www.keablehomes.co.uk
sade.keable@keablehomes.co.uk
uk
01543 468847

Agents Note: Whilst every care has been taken to prepare these sales particulars, they are for guidance purposes only. All measurements are approximate and are for general guidance purposes only and whilst every care has been taken to ensure their accuracy, they should not be relied upon and potential buyers are advised to recheck the measurements