



V E R T E X

ALTRINCHAM

CONTEMPORARY HQ OFFICE BUILDING  
TO LET 2,220 - 13,615 SQ FT

STAMFORD STREET, ALTRINCHAM, CHESHIRE WA14 1EZ

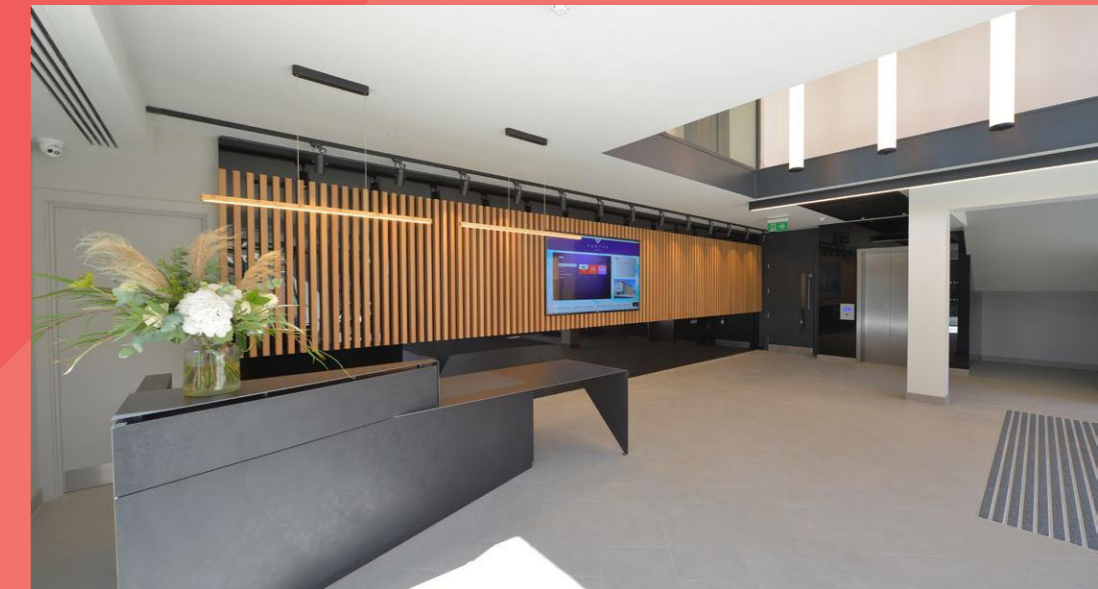
ENTER





# CREATIVE FUNCTIONAL SPACE FOR MODERN WORKING

Located in the heart of Altrincham Town Centre, Vertex is an impressive Grade A contemporary HQ office building which has undergone a major refurbishment and transformed to provide creative functional space for modern working.



# A HEIGHTENED SENSE OF ARRIVAL

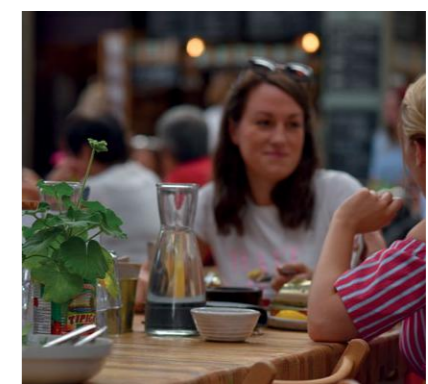
A new, warm and welcoming reception area allows customers to meet and greet in stylish surroundings.

The sense of arrival is heightened by the incorporation of the double height glazed atrium.



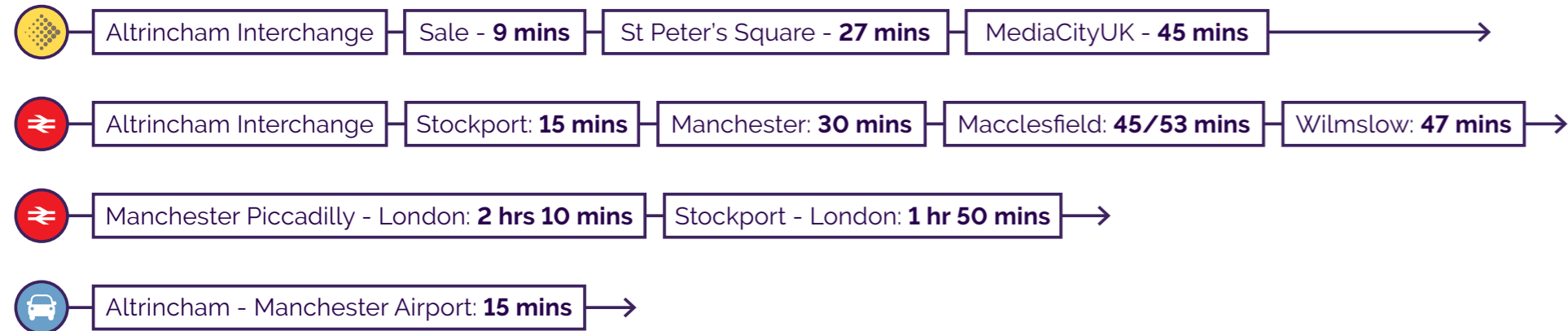


Vertex is immersed in the heart of one of Cheshire's most vibrant towns within 300 metres of the nationally acclaimed Altrincham market with all its associated benefits.





Within five minutes walk occupiers can access the Greater Manchester transport system via Altrincham Interchange and all the other amenities that this affluent town centre offers.

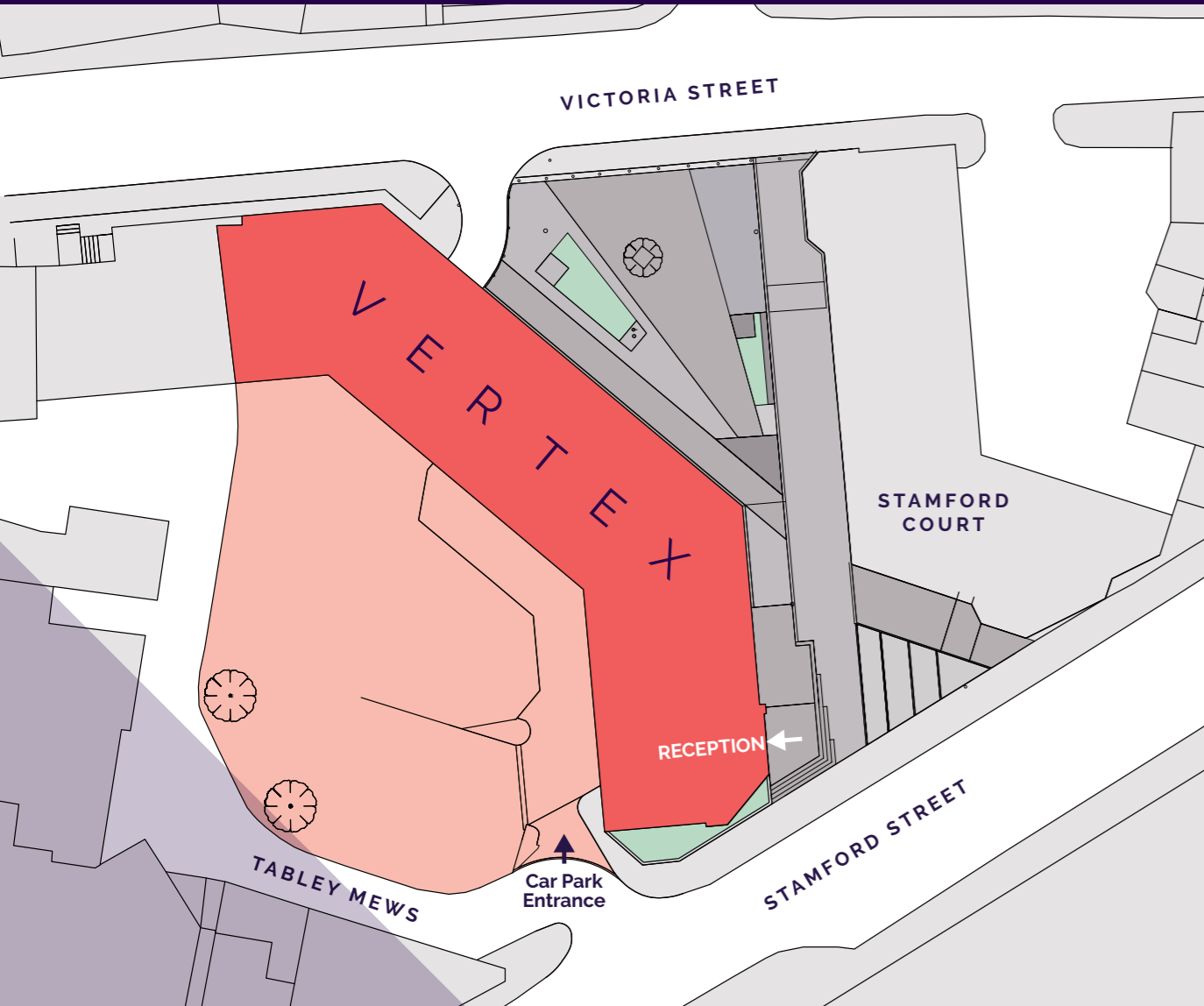


Representation of the 4th floor

## SPECIFICATION

- Full comfort cooling / heating
- Up to 60 secure, on site parking spaces.
- Provision for electric car charging points
- State-of-the-art access control system
- 24 hour building access
- Bicycle store
- Showers and changing facilities (optional)
- Feature exposed soffit with LED lighting
- Floor connectivity design incorporating three compartment perimeter trunking
- Male, Female and Disabled WC's



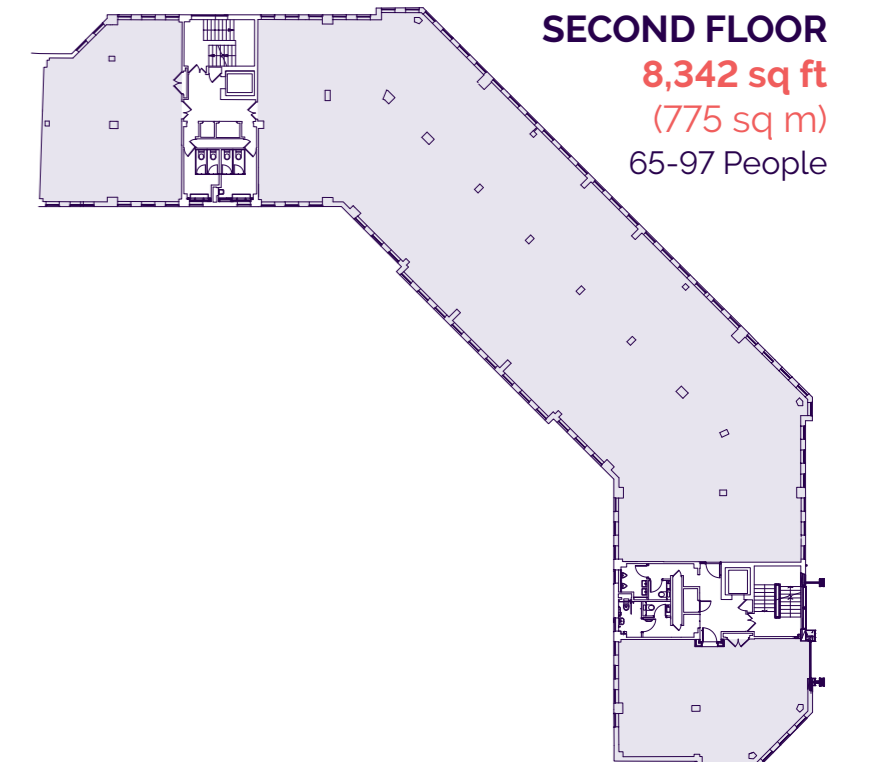
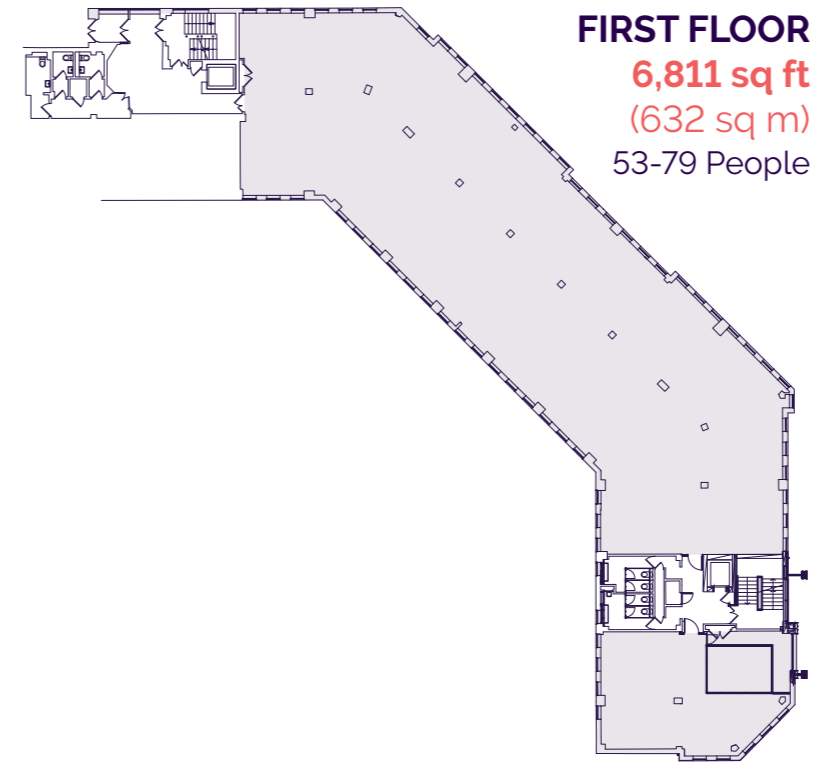
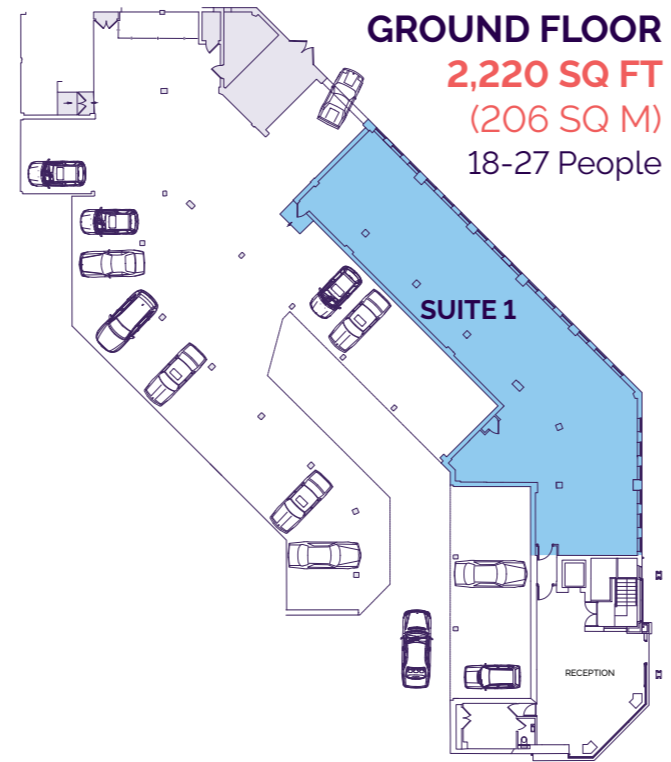


## FLEXIBLE FLOOR PLATES

Vertex provides an efficient floor shape offering a variety of working layouts and is capable of accommodating bespoke suite sizes.

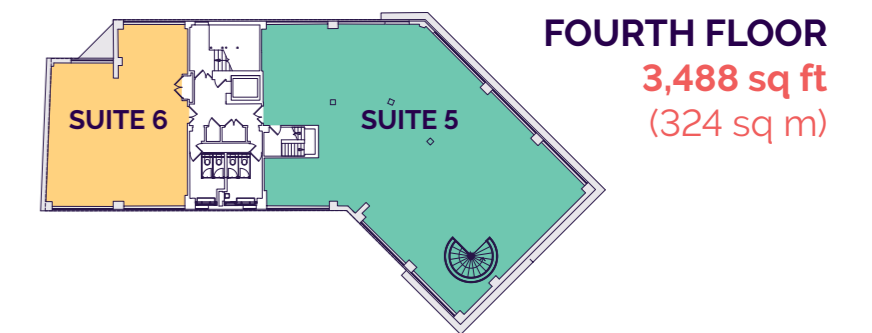
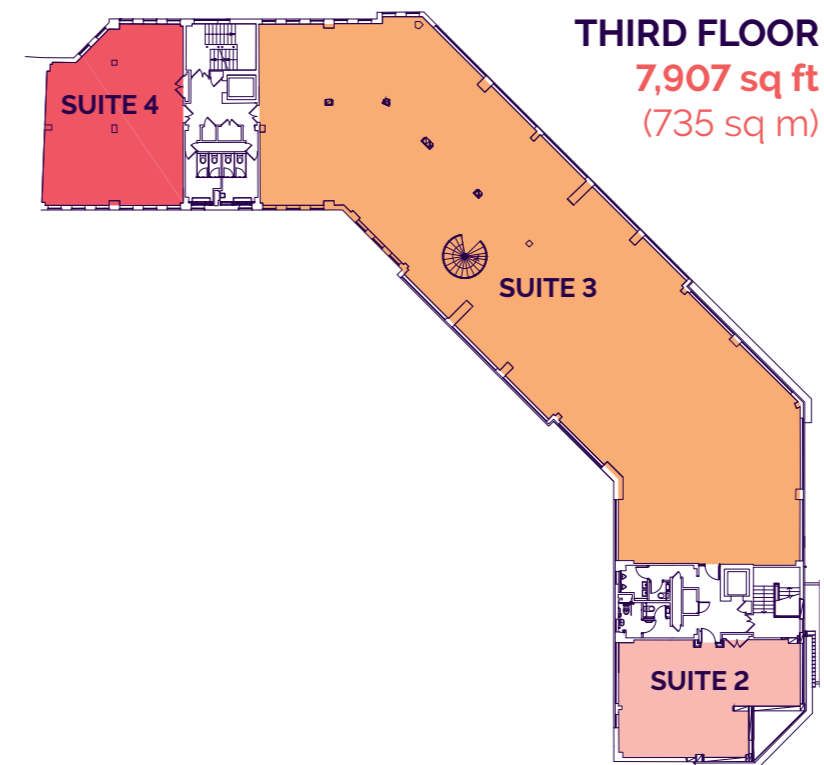
Floors 3 and 4 can easily sub-divide into smaller suites as shown.

The flexibility allows for customers to easily create their own vibrant working environment.



The 6 available suites can be combined in a variety of ways to meet your specific office requirement.

Floor	Sq m	Sq ft
<b>Ground</b>		
Suite 1	206	2,220
<b>1st</b>	LET	LET
<b>2nd</b>	LET	LET
<b>3rd</b>		
Suite 2	80	861
Suite 3	555	5,969
Suite 4	100	1,077
<b>4th</b>		
Suite 5	227	2,444
Suite 6	97	1,044
<b>Total</b>	<b>1,265</b>	<b>13,615</b>



**WHOLE THIRD & FOURTH FLOOR**  
**11,395 sq ft**  
 (1,059 sq m)  
 91-138 People

The floor plates allow a variety of occupational densities to suit most modern business uses. The inherent design provides 100% natural light on 100% of all of the workspace.

[vertexaltrincham.com](http://vertexaltrincham.com)





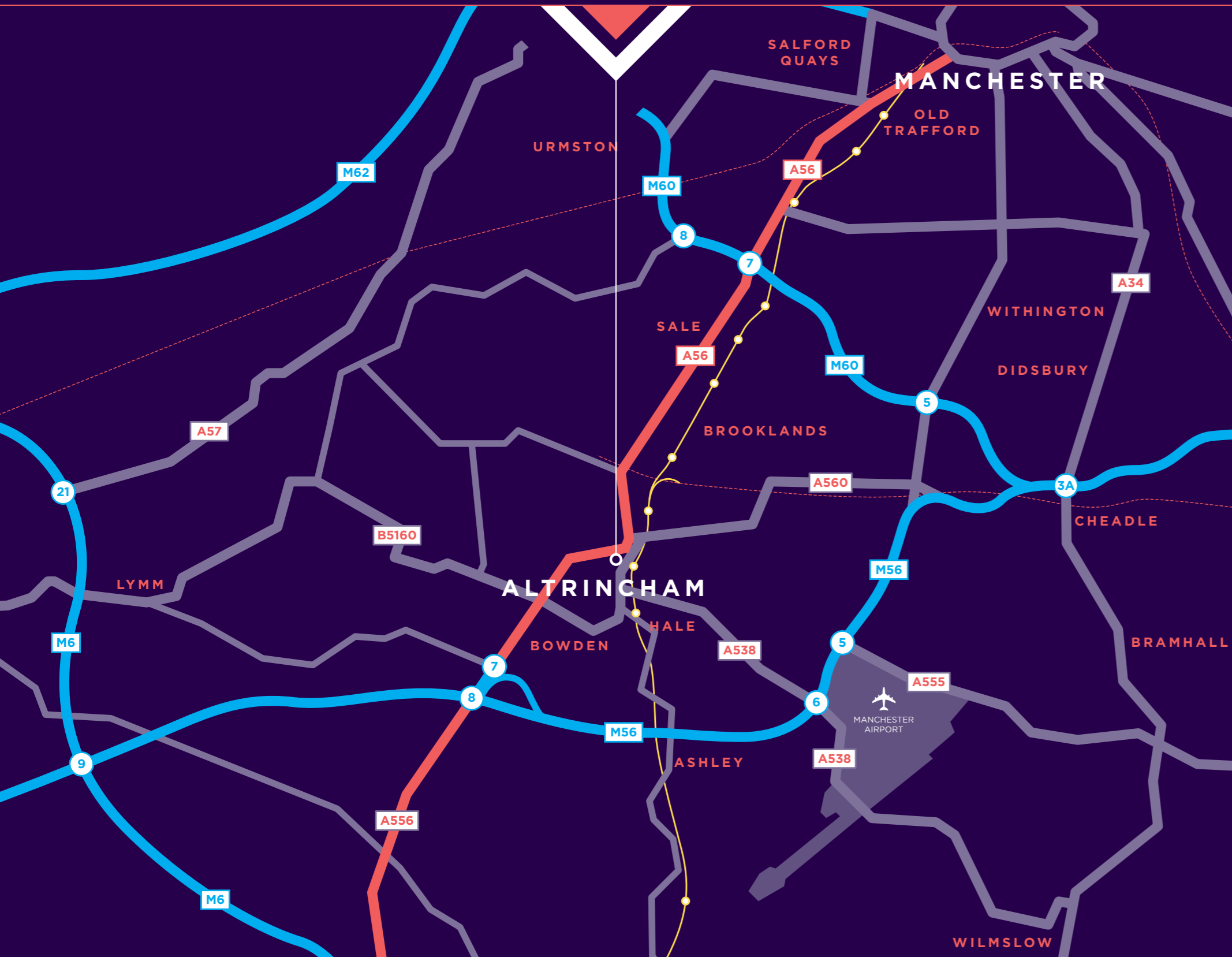












KEY



SATNAV REF  
**WA14 1EZ**

Vertex is located within Altrincham's Business District at the border with Altrincham's Retail & Leisure District. Vertex is within 150 metres of Altrincham's principal transport interchange hub. Access to and from Vertex from Greater Manchester couldn't be easier. The building itself benefits from dedicated on site secure car parking and is within a short walk of Altrincham's Retail, Leisure and Restaurant District centred around Altrincham Market.

All the office suites benefit from super fast internet. The bright and spacious reception exudes a contemporary design flare matching current work space way of thinking for customers and employees alike.

**VERTEXALTRINCHAM.COM**

For viewings and further information, please contact:

**Dan Margolis**  
07394 573258  
dan.margolis@colliers.com

**Neil Mort**  
07584 394 737  
neil.mort@cbre.com

**Conor Walmsley**  
07716 406211  
conor.walmsley@colliers.com

**Jonathan Cook**  
07702 976 062  
jonathan.cook@cbre.com



**0161 831 3300**  
colliers.com/uk



**+44 (0)161 455 7666**  
www.cbre.co.uk

Misrepresentation Act 1967. These details are provided only as a general guide to what is being offered subject to contract and subject to lease being available and are not intended to be construed as containing any representation of fact upon which any interested party is entitled to rely. Other than this general guide neither we nor any person in our employ has any authority to make, give or imply any representation or warranty whatsoever relating to the properties in these details. Designed and produced by Richard Barber & Co. 0161 833 0555. richardbarber.co.uk. March 2023.