

---

# TO LET

---

- ✔ Busy commuter station with 2.27m passengers per annum
- ✔ Pop Up Retail Stand/Kiosk Opportunity
- ✔ Prime location close to the station entrance
- ✔ Site available for up to 7 days a week
- ✔ Prime location close to the station entrance



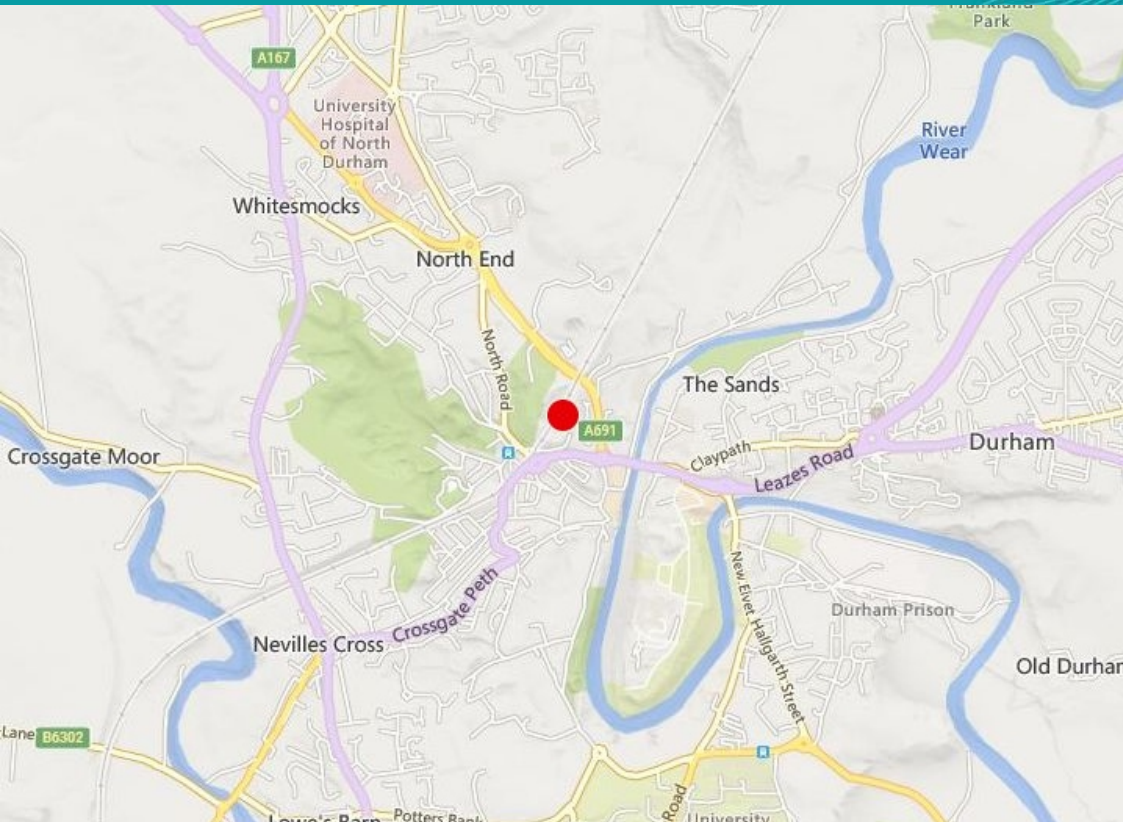
Durham Railway Station, North Road, Durham DH1 4RB

---

Pop-Up Retail / Kiosk Opportunities

---

# Durham Railway Station, North Road, Durham DH1 4RB



## DESCRIPTION

On behalf of London North Eastern Railway, opportunities are available for pop-up retail/kiosks on the raised hard-standing area as shown on the photo (final location to be agreed).

Incoming trader to provide a new branded stand (max 3m wide by 2m deep) including portable services (power, water drainage if required) and leg weights, which is to be erected and removed/demounted after each trading day.

Trader to provide fire safety equipment and Public Liability Insurance Cover and any other relevant H&S or Hygiene certification.

## USER

Suitable for a variety of uses including gifts, fashion, flowers, service retail and catering etc but excluding specialist coffee/news/alcohol.

## LOCATION

The busy Grade II listed commuter station is located on the edge of Durham town centre, close to residential and new student accommodation.

The Station benefits from regular train services to Leeds, Newcastle, York and Edinburgh.

The Station benefits from over 2.27 million passengers per annum.

## TERMS

A rolling Tenancy at Will will be granted terminable by either party giving to the other 28 days notice in writing.

## RENT

Licence Fee £25 plus VAT per day

## BUSINESS RATES

For business rating information please visit the Valuation Office Agency website [www.voa.gov.uk](http://www.voa.gov.uk).

## VAT

All prices, premiums and rents, etc are quoted exclusive of VAT at the prevailing rate.

[lsh.co.uk](http://lsh.co.uk)

© Lambert Smith Hampton. Details of Lambert Smith Hampton (LSH) can be viewed on our website [www.lsh.co.uk](http://www.lsh.co.uk) This document is for general informative purposes only. The information in it is believed to be correct, but no express or implied representation or warranty is made by LSH as to its accuracy or completeness, and the opinions in it constitute our judgement as of this date but are subject to change. Reliance should not be placed upon the information, forecasts and opinions for any purpose, and no responsibility or liability, whether in negligence or otherwise, is accepted by LSH or by any of its directors, officers, employees, agents or representatives for any loss arising from any use of this document or its contents or otherwise arising in connection with this document. All rights reserved. No part of this document may be transmitted or reproduced in any material form by any means, electronic, recording, mechanical, photocopying or otherwise, or stored in any information storage or retrieval system of any nature, without the prior written permission of the copyright holder, except in accordance with the provisions of the Copyright Designs and Patents Act 1988. Warning: the doing of an unauthorised act in relation to a copyright work may result in both a civil claim for damages and criminal prosecution. Regulated by RICS 31-Mar-2023

## VIEWING & FURTHER INFORMATION

Viewing strictly by prior appointment:

**Lambert  
Smith  
Hampton**

Jason Pinkett  
020 7198 2136  
[jpinkett@lsh.co.uk](mailto:jpinkett@lsh.co.uk)

**LNER**  
LONDON NORTH EASTERN RAILWAY