



**Connells**

Cherry Orchard Drive  
Rainham Gillingham

# Cherry Orchard Drive Rainham Gillingham ME8 8GD

For Sale offers over  
**£340,000**



## Property Description

This pristine two double bedroom end-terrace property, located in a highly sought-after area, is presented in show home condition throughout and must be seen to fully appreciate the high-quality finishes and thoughtful extras. Bright, spacious, and stylish, this beautifully maintained home is ideal for first-time buyers or downsizing. The ground floor features a light-filled living/dining area, a modern kitchen upgraded with cooker and hood, under-cupboard lighting, and ceiling spotlights. A contemporary downstairs W/C. Upstairs, two generously sized double bedrooms are complemented by a fully tiled bathroom with shower-over-bath with the added bonus of en suite shower of the primary bedroom. Outside, the professionally landscaped garden features a perfect space for relaxing or entertaining.

The property also benefits from two allocated parking spaces. This is a truly immaculate home, both inside and out—ready to move straight into, with every detail thoughtfully finished. Early viewing is highly recommended!

### **Kitchen/Diner**

14' 5" x 9' 10" ( 4.39m x 3.00m )

### **Bedroom One**

14' 7" x 10' 4" ( 4.45m x 3.15m )

### **Bedroom Two**

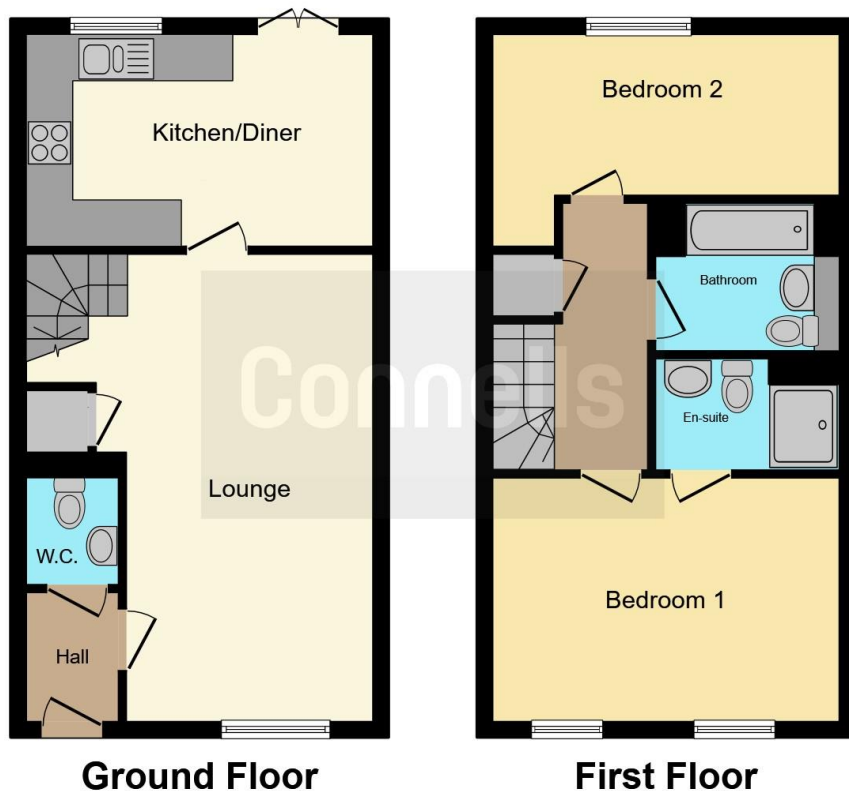
14' 1" x 6' 8" ( 4.29m x 2.03m )

### **Bathroom**

### **Rear Garden**

### **X2 Allocated Spaces**





This floor plan is for illustrative purposes only. It is not drawn to scale. Any measurements, floor areas (including any total floor area), openings and orientation are approximate. No details are guaranteed, they cannot be relied upon for any purpose and they do not form part of any agreement. No liability is taken for any error, omission or misstatement. A party must rely upon its own inspection(s). Powered by [www.focalagent.com](http://www.focalagent.com)

To view this property please contact Connells on

**T 01634 233400**  
**E [rainham@connells.co.uk](mailto:rainham@connells.co.uk)**

21 High Street  
 RAINHAM ME8 7HX

EPC Rating: B Council Tax  
 Band: C

**view this property online [connells.co.uk/Property/RAL103737](http://connells.co.uk/Property/RAL103737)**



Tenure: Freehold



1. MONEY LAUNDERING REGULATIONS Intending purchasers will be asked to produce identification documentation at a later stage and we would ask for your co-operation in order that there will be no delay in agreeing the sale. 2. These particulars do not constitute part or all of an offer or contract. 3. The measurements indicated are supplied for guidance only and as such must be considered incorrect. Potential buyers are advised to recheck measurements before committing to any expense. 4. We have not tested any apparatus, equipment, fixtures, fittings or services and it is in the buyers interest to check the working condition of any appliances.

Connells Residential is registered in England and Wales under company number 1489613, Registered Office is Cumbria House, 16-20 Hockliffe Street, Leighton Buzzard, Bedfordshire, LU7 1GN. VAT Registration Number is 500 2481 05.

**See all our properties at [www.connells.co.uk](http://www.connells.co.uk) | [www.rightmove.co.uk](http://www.rightmove.co.uk) | [www.zoopla.co.uk](http://www.zoopla.co.uk)**

Property Ref: RAL103737 - 0006