



Connells

City Way
Rochester



Property Description

A larger than average 1930's built property that has been extended to the side and rear by the current owners. The well-maintained accommodation is arranged over two floors and briefly comprises entrance hall with staircase to the first floor, lounge with double glazed bay window to the front, separate dual aspect dining room and a fitted kitchen which provides access to the wonderful rear garden.

The first floor landing leads to the main bedroom at the rear, a second double bedroom to the front with a double glazed bay window, and two further bedrooms and a family bathroom/WC. There is also a block paved drive to the front providing off road parking.



Lounge + Bay

10' 5" x 12' 8" (3.17m x 3.86m)

Dining Room

11' 1" x 11' 9" (3.38m x 3.58m)

Kitchen L Shaped

17' 6" Max x 18' 3" Max (5.33m Max x 5.56m Max)

Landing Split Level

11' 2" Max x 13' 1" Max (3.40m Max x 3.99m Max)

Bedroom One

11' 2" Max x 13' 1" Max (3.40m Max x 3.99m Max)

Bedroom Two

11' 8" Max x 12' 6" Max (3.56m Max x 3.81m Max)

Bedroom Three

7' x 7' 5" (2.13m x 2.26m)

Bedroom Four

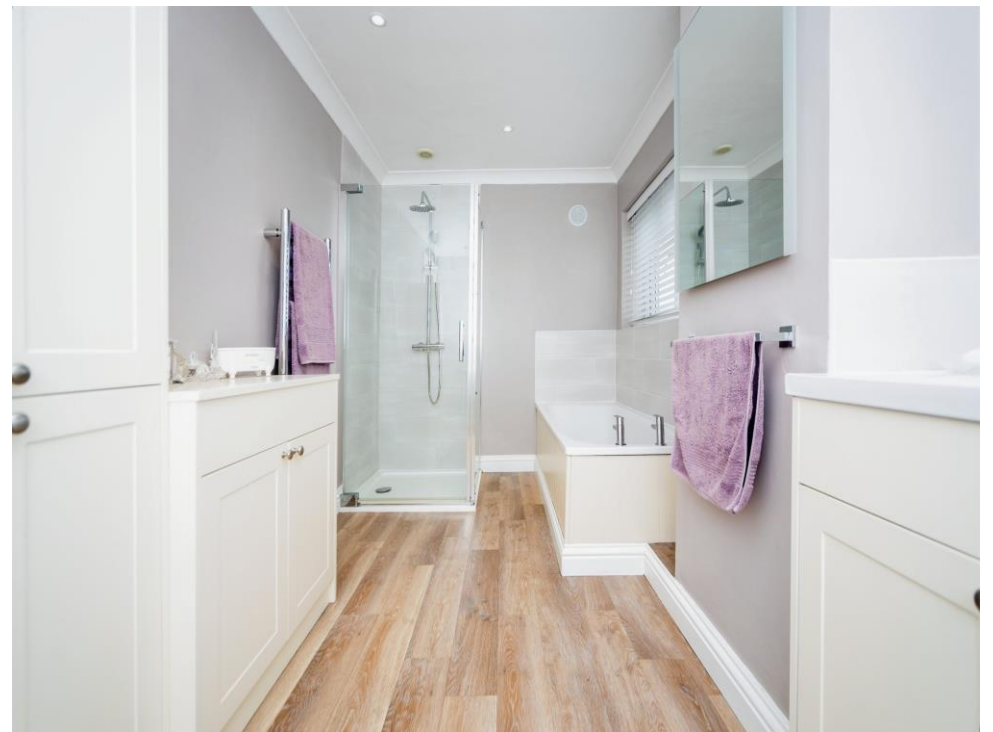
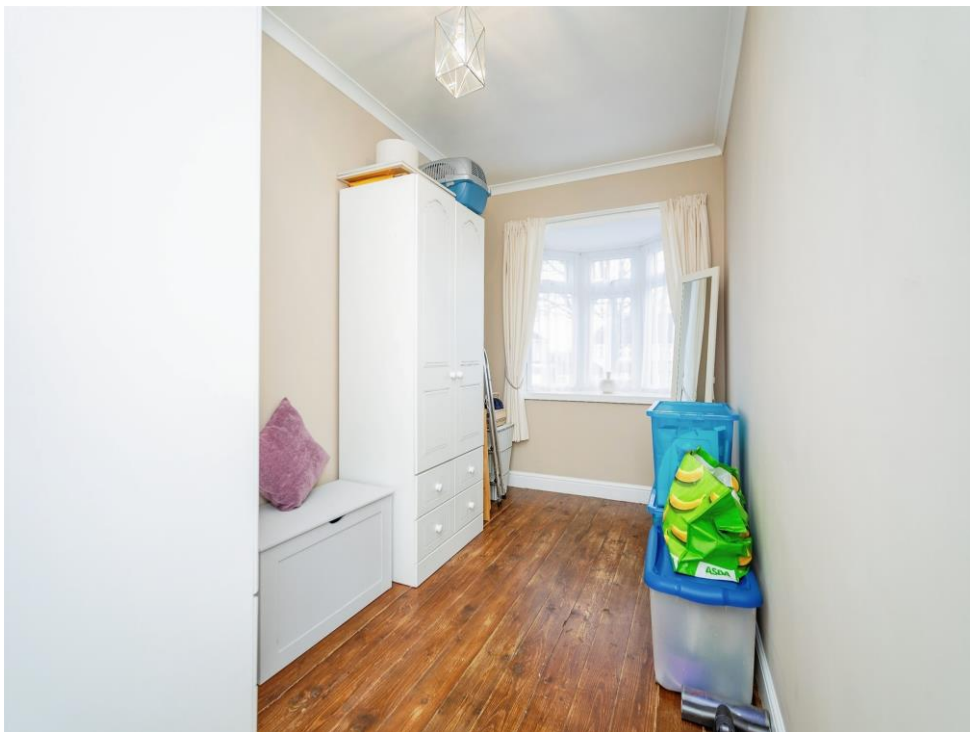
6' 9" Max x 15' 4" (2.06m Max x 4.67m)

Bathroom

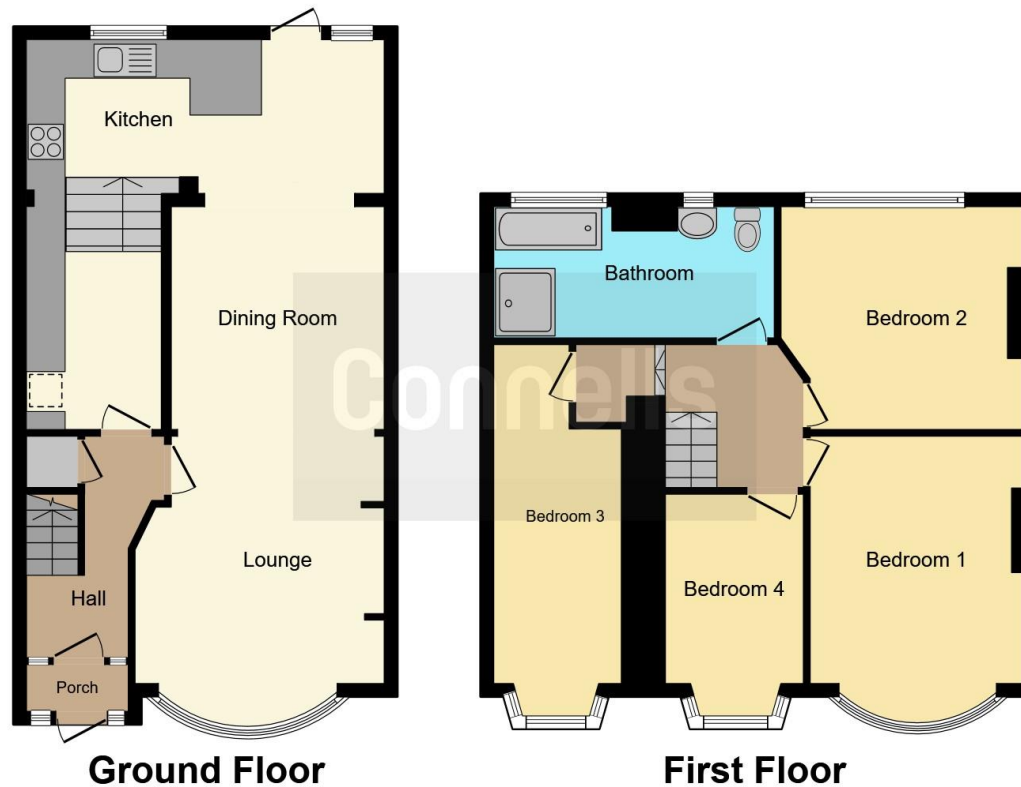
Front Garden

Rear Garden









This floor plan is for illustrative purposes only. It is not drawn to scale. Any measurements, floor areas (including any total floor area), openings and orientation are approximate. No details are guaranteed, they cannot be relied upon for any purpose and they do not form part of any agreement. No liability is taken for any error, omission or misstatement. A party must rely upon its own inspection(s). Powered by www.focalagent.com

To view this property please contact Connells on

T 01634 233400
E rainham@connells.co.uk

21 High Street
 RAINHAM ME8 7HX

EPC Rating: Awaited

Tenure: Freehold

view this property online connells.co.uk/Property/RAL103435



1. MONEY LAUNDERING REGULATIONS Intending purchasers will be asked to produce identification documentation at a later stage and we would ask for your co-operation in order that there will be no delay in agreeing the sale. 2. These particulars do not constitute part or all of an offer or contract. 3. The measurements indicated are supplied for guidance only and as such must be considered incorrect. Potential buyers are advised to recheck measurements before committing to any expense. 4. We have not tested any apparatus, equipment, fixtures, fittings or services and it is in the buyers interest to check the working condition of any appliances.

Connells Residential is registered in England and Wales under company number 1489613, Registered Office is Cumbria House, 16-20 Hockliffe Street, Leighton Buzzard, Bedfordshire, LU7 1GN. VAT Registration Number is 500 2481 05.

See all our properties at www.connells.co.uk | www.rightmove.co.uk | www.zoopla.co.uk

Property Ref: RAL103435 - 0002