



**Connells**

Burntwick Drive  
Lower Halstow Sittingbourne



Burntwick Drive  
Lower Halstow Sittingbourne ME9 7DX

For Sale  
**£375,000**



#### Property Description

This 4 bedroom semi detached family home is located in this quiet sought after village between Rainham & Sittingbourne. Please take the time to look at the rooms sizes to fully appreciate the space and scope on offer. There is also ample parking and a garage.



### Entrance Porch

### Entrance Hall

### Cloakroom

### Lounge/Diner

13' 2" Max x 23' 9" Max ( 4.01m  
Max x 7.24m Max )

### Kitchen/Breakfast Room

8' 9" x 11' 8" ( 2.67m x 3.56m )

### Bedroom One

11' 2" x 12' ( 3.40m x 3.66m )

### Bedroom Two

11' x 11' 1" ( 3.35m x 3.38m )

### Bedroom Three

7' 7" x 9' 4" ( 2.31m x 2.84m )

### Bedroom Four

8' 8" x 8' 11" ( 2.64m x 2.72m )

### Bathroom

### Garage

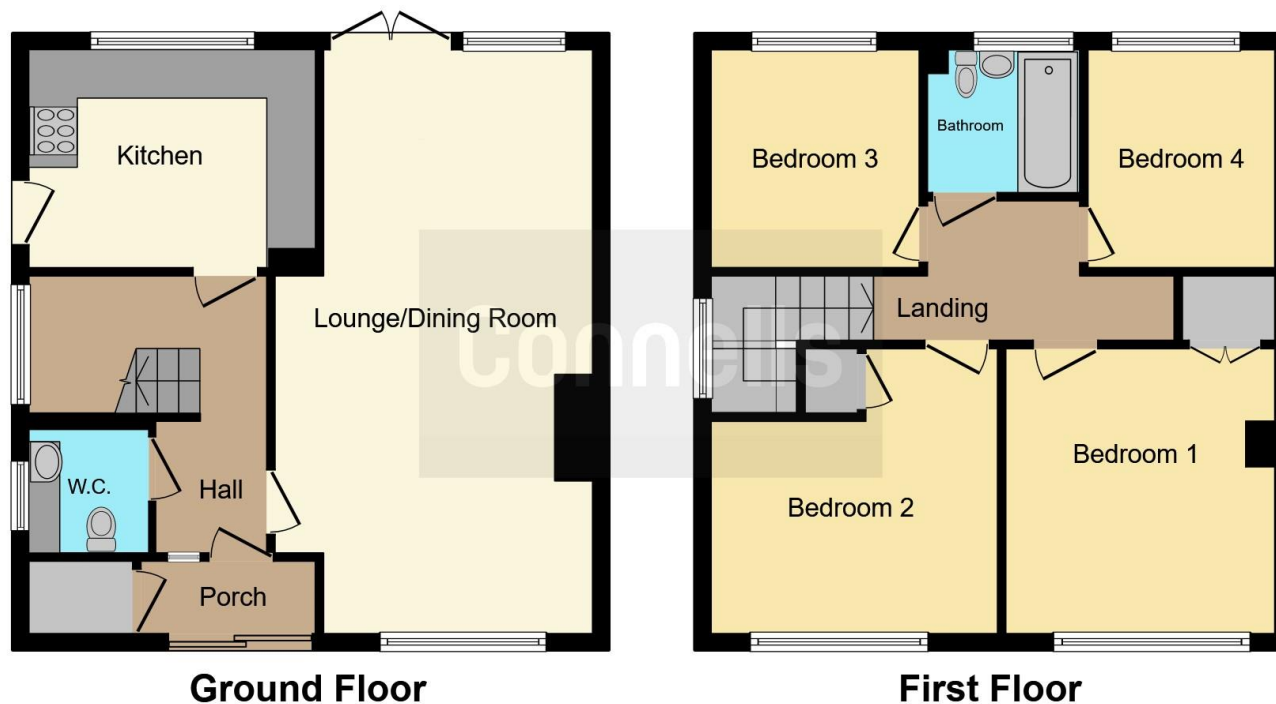












This floor plan is for illustrative purposes only. It is not drawn to scale. Any measurements, floor areas (including any total floor area), openings and orientation are approximate. No details are guaranteed, they cannot be relied upon for any purpose and they do not form part of any agreement. No liability is taken for any error, omission or misstatement. A party must rely upon its own inspection(s). Powered by [www.focalagent.com](http://www.focalagent.com)

To view this property please contact Connells on

**T 01634 233400**  
**E [rainham@connells.co.uk](mailto:rainham@connells.co.uk)**

21 High Street  
 RAINHAM ME8 7HX

**EPC Rating: Awaited**

Tenure: Freehold

**view this property online** [connells.co.uk/Property/RAL103391](http://connells.co.uk/Property/RAL103391)



1. MONEY LAUNDERING REGULATIONS Intending purchasers will be asked to produce identification documentation at a later stage and we would ask for your co-operation in order that there will be no delay in agreeing the sale. 2. These particulars do not constitute part or all of an offer or contract. 3. The measurements indicated are supplied for guidance only and as such must be considered incorrect. Potential buyers are advised to recheck measurements before committing to any expense. 4. We have not tested any apparatus, equipment, fixtures, fittings or services and it is in the buyers interest to check the working condition of any appliances.

Connells Residential is registered in England and Wales under company number 1489613, Registered Office is Cumbria House, 16-20 Hockliffe Street, Leighton Buzzard, Bedfordshire, LU7 1GN. VAT Registration Number is 500 2481 05.

**See all our properties at [www.connells.co.uk](http://www.connells.co.uk) | [www.rightmove.co.uk](http://www.rightmove.co.uk) | [www.zoopla.co.uk](http://www.zoopla.co.uk)**

Property Ref: RAL103391 - 0002