



**Connells**

Ensign House Pegasus Way  
Gillingham



### Property Description

Connells are delighted to offer this ground floor apartment located in this very popular development in Gillingham. Within easy reach of local shops and amenities, it is perfectly positioned to pop out for those essential items. Gillingham railway station is not far away either. You can also get the M2/A2 with relative ease making this a favoured location for commuters. The property is in wonderful condition throughout making this a home ready to move in to and enjoy from day one.



**Entrance Hall**

**Lounge/Kitchen + Balcony**

9' 10" x 22' ( 3.00m x 6.71m )

**Shower Room**

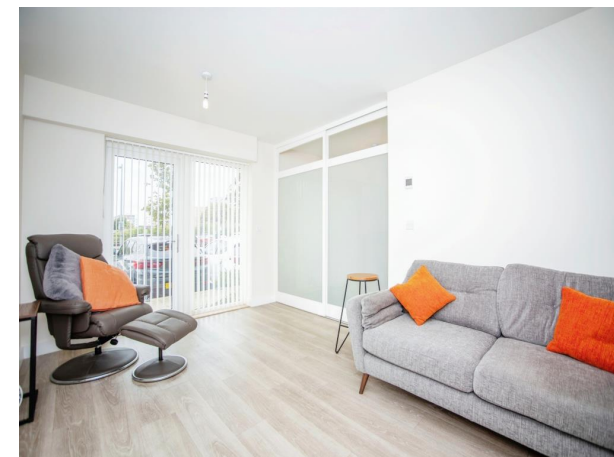
**Bedroom**

7' 11" x 11' 1" ( 2.41m x 3.38m )





This floor plan is for illustrative purposes only. It is not drawn to scale. Any measurements, floor areas (including any total floor area), openings and orientation are approximate. No details are guaranteed, they cannot be relied upon for any purpose and they do not form part of any agreement. No liability is taken for any error, omission or misstatement. A party must rely upon its own inspection(s). Powered by [www.focalagent.com](http://www.focalagent.com)



To view this property please contact Connells on

**T 01634 233400**  
**E [rainham@connells.co.uk](mailto:rainham@connells.co.uk)**

21 High Street  
 RAINHAM ME8 7HX

**EPC Rating: C**

**view this property online [connells.co.uk/Property/RAL103126](http://connells.co.uk/Property/RAL103126)**

This is a Leasehold property. We are awaiting further details about the Term of the lease. For further information please contact the branch. Please note additional fees could be incurred for items such as Leasehold packs.

Tenure: Leasehold



1. MONEY LAUNDERING REGULATIONS Intending purchasers will be asked to produce identification documentation at a later stage and we would ask for your co-operation in order that there will be no delay in agreeing the sale. 2. These particulars do not constitute part or all of an offer or contract. 3. The measurements indicated are supplied for guidance only and as such must be considered incorrect. Potential buyers are advised to recheck measurements before committing to any expense. 4. We have not tested any apparatus, equipment, fixtures, fittings or services and it is in the buyers interest to check the working condition of any appliances.

Connells Residential is registered in England and Wales under company number 1489613, Registered Office is Cumbria House, 16-20 Hockliffe Street, Leighton Buzzard, Bedfordshire, LU7 1GN. VAT Registration Number is 500 2481 05.

**See all our properties at [www.connells.co.uk](http://www.connells.co.uk) | [www.rightmove.co.uk](http://www.rightmove.co.uk) | [www.zoopla.co.uk](http://www.zoopla.co.uk)**

Property Ref: RAL103126 - 0004